

Gross internal area (approx.)

105 Sq m (1127 Sq ft)

For identification only, Not to Scale

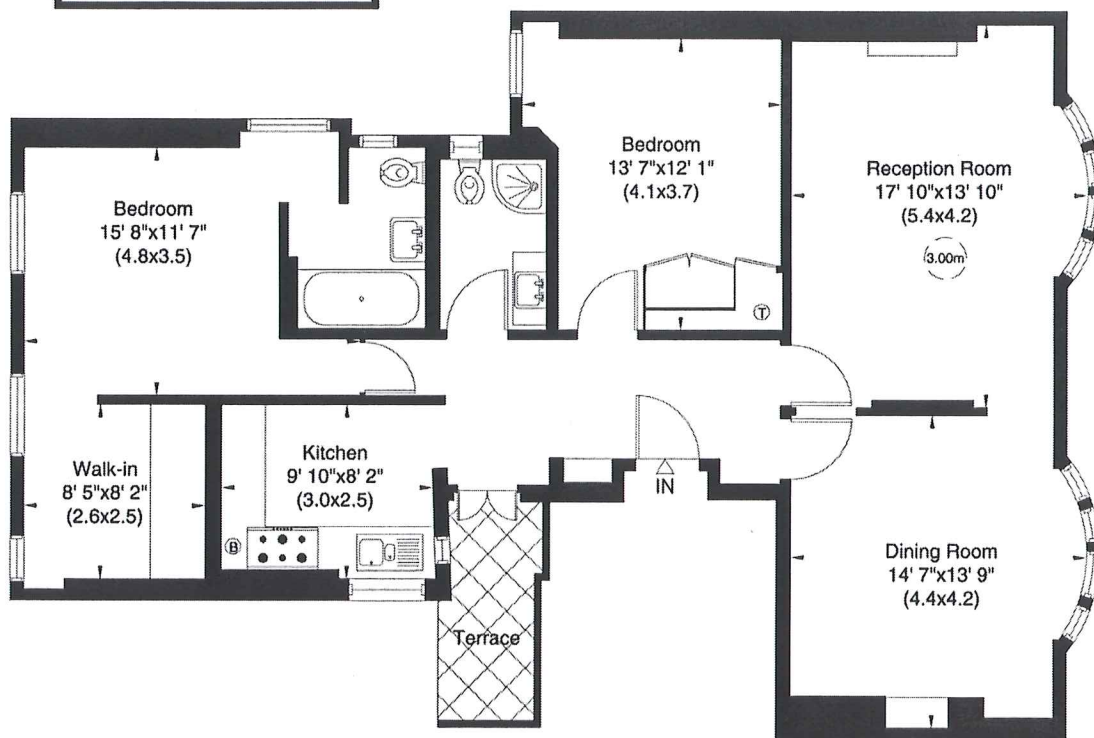
Floor Plan by **capital group** 020 8671 7722



**ATTENTION JEREMY**

Please check room names and  
then email to..

[sue@capital-group.co.uk](mailto:sue@capital-group.co.uk)



**Second Floor**

Not to scale, for guidance only and must not be relied upon as a statement of fact. All measurements and areas are approximate only (and have been prepared in accordance with the current edition of the RICS Code of Measuring Practice).