

HEALTHCARE LET



LET AGREED

WIMPOLE STREET, HARLEY STREET MEDICAL DISTRICT, LONDON W1 £35,000 PER ANNUM

This medical suite located on the second floor comprises of 2 rooms, w/c, kitchen and storeroom.

AMENITIES

- Passenger Lift
- Second Floor
- Communal Waiting Room
- In the heart of the medical district
- EPC: E



LET AGREED

HARLEY STREET, LONDON W1G £48,366 PER ANNUM

This medical suite located on the first floor having an area approximately 648 sq ft (60 sq.m) consisting of two consulting rooms.

AMENITIES

- First Floor
- Business Rates Included
- 2 Rooms
- Passenger Lift
- Communal Waiting Room
- In the heart of Marylebone



UNDER OFFER

WIMPOLE STREET, MARYLEBONE, LONDON W1 £50,000 PER ANNUM

The suite is arranged on the 4th floor having an area of approximately 874 sq ft (81 sq m) served by a passenger lift. Viewing is highly recommended.

AMENITIES

- 4 Rooms
- Passenger Lift
- Fourth Floor
- In the heart of the Medical District

HEALTHCARE LET



WIMPOLE STREET, LONDON, W1G £52,000 PER ANNUM

The suite is arranged on the second floor having an area of approximately 879 sq ft (82 sq m).

AMENITIES

- Communal Waiting Room
- Three Rooms
- Second Floor
- In the heart of the medical district
- EPC: C



86 HARLEY STREET, LONDON W1G £57,600 PER ANNUM

This medical suite having an area approximately 588 sq ft / 54.63 sq m.

AMENITIES

- Manned reception
- Shared waiting room
- Period Features
- Beautiful entrance and common parts
- Capped off water services
- Heating & Cooling system



25 UPPER WIMPOLE STREET, LONDON W1G £59,500 PER ANNUM

This dental room is located on the ground floor having an area of approximately 305 Sq ft / (28 Sqm).

AMENITIES

- One Room
- Ground Floor
- In the heart of the medical district
- EPC D
- The rent includes business rates and service charge.

HEALTHCARE LET



UNDER OFFER

WIMPOLE STREET, MARYLEBONE VILLAGE, LONDON W1 £58,000 PER ANNUM

Three fully fitted dental rooms located on the ground and lower ground floor.

AMENITIES

- In the heart of the Medical District
- Ground and Lower Ground Floor
- Communal Waiting Room
- Manned Reception
- EPC: D

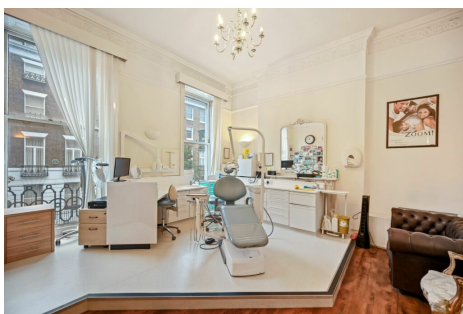


136 HARLEY STREET, LONDON W1G £60,000 PER ANNUM

The available accommodation comprises one well-presented consulting room on the first floor.

AMENITIES

- All Inclusive Rent
- First Floor
- In the heart of the medical district
- Communal Waiting Room
- EPC: B



9 UPPER WIMPOLE STREET, LONDON W1G £60,000 PER ANNUM

This consulting room is located on the first floor having an area approximately 270 sq ft / 25 sqm.

AMENITIES

- One Room
- First Floor
- In the heart of the medical district
- EPC: F
- The rent includes of rates and service charge.
- Manned Reception

HEALTHCARE LET



UNDER OFFER

WIMPOLE STREET, MARYLEBONE VILLAGE, LONDON W1 £85,000 PER ANNUM

This reside and practice medical suite is approximately 1,770 sq ft (164 sq m) and consists of 3/4 consulting rooms.

AMENITIES

- Passenger Lift
- In the heart of the medical district
- Communal Waiting Room
- Second Floor
- approx 1,770 sq ft (164 sq m)
- EPC: D

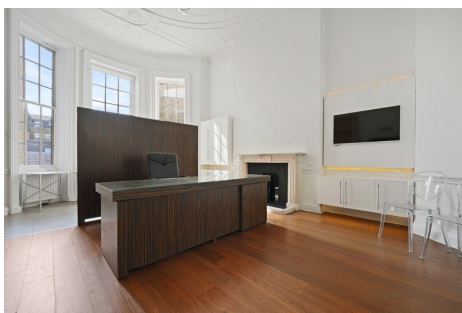


HARLEY STREET, LONDON W1G £80,000 PER ANNUM

Medical suite to rent in the heart of the medical district.

AMENITIES

- Passenger Lift
- In the heart of the medical district
- Second Floor
- EPC: B



UNDER OFFER

HARLEY STREET, LONDON W1G £85,510 PER ANNUM

This medical suite located on the First Floor having an area approximately 1,006 sq ft (93 sq.m) consisting of two/three consulting rooms.

AMENITIES

- First Floor
- Lift
- In the heart of the medical district
- Communal Waiting Room
- Shared Reception

HEALTHCARE LET



LET AGREED

WELBECK STREET, MARYLEBONE, LONDON W1G £100,000 PER ANNUM

Located in the Harley Street Health District, this newly refurbished ground and 1st floor healthcare suite comprises of four good size medical consulting rooms. This listed building presents beautiful period features, excellent natural light.

AMENITIES

- Ground & First Floor
- Air conditioned
- In the heart of the medical district
- 4 Rooms
- EPC: B



WEYMOUTH STREET, MARYLEBONE, LONDON W1G £56,000 PER ANNUM

This medical suite located on the lower ground floor having an area of approximately 970 sq ft.

AMENITIES

- Lower Ground Floor
- Sympathetically refurbished to a high spec
- In the heart of the medical district
- EPC: C



11 DEVONSHIRE PLACE, LONDON W1G £195,000 PER ANNUM

Located in the Harley Street Health District, this newly refurbished ground and 1st floor healthcare suite comprises of five good size medical consulting rooms, two reception rooms and two office spaces. This listed building presents beautiful period features, excellent natural light, showers, teapoint and a lift.

AMENITIES

- 2,034 sq ft / 188.96 sq m
- Ground & First Floor
- Passenger Lift
- Air Conditioning
- Period Features