



JEREMY JAMES

QUEEN ANNE STREET, MARYLEBONE VILLAGE, LONDON W1G



PRICE

£1,500,000

TENURE

Leasehold - 121 Years

SERVICE CHARGE

£6,000 half yearly

LOCAL AUTHORITY

City of Westminster

COUNCIL TAX BAND

E

33 New Cavendish Street
London,
W1G 9TS

020 7486 4111
jeremyjames@jeremy-james.co.uk



JEREMY JAMES

QUEEN ANNE STREET, MARYLEBONE VILLAGE, LONDON W1G



DESCRIPTION

This duplex apartment located on the ground and first floors is approximately 1,011 sq ft (94 sq m). The apartment comprises of two bedrooms, two bathrooms, kitchen and reception room with the apartment benefitting for direct lift access.. The building also features from a communal gardens and a day porter.

The building is located on the south side of Queen Anne Street close to the junction with Chandos Street. Both Oxford Circus and Bond Street underground stations are within close proximity. The shopping facilities of Marylebone High Street and Oxford Street together with the open spaces of Regent Park are also nearby.

AMENITIES

2 Bedrooms

Passenger Lift

Communal Garden

Porter

Medical Licence available subject to Landlords consent

EPC: E

33 New Cavendish Street
London,
W1G 9TS

020 7486 4111
jeremyjames@jeremy-james.co.uk

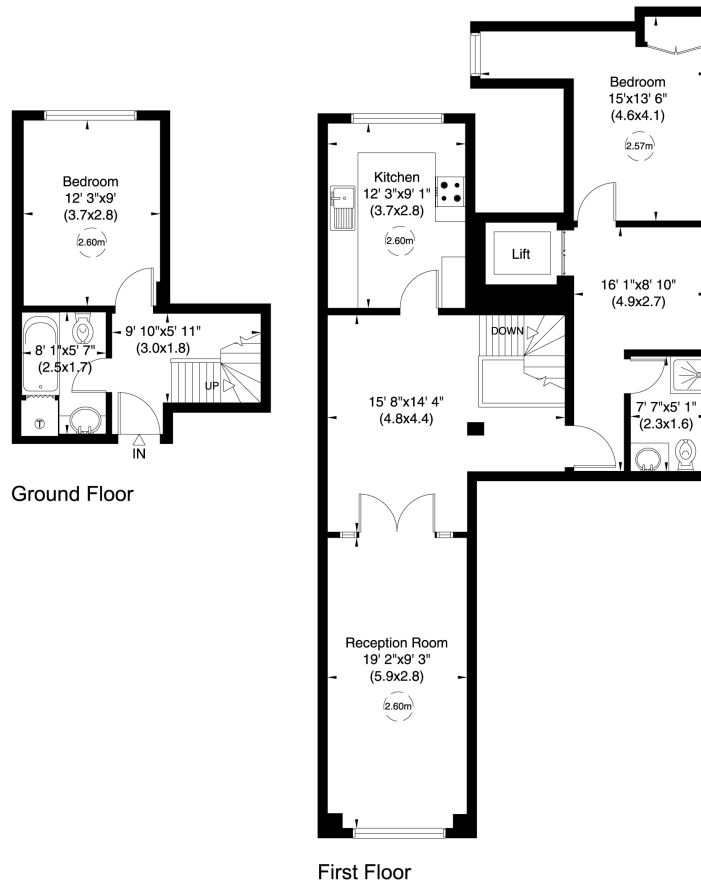
7 Milford House, W1

Gross internal area (approx.)

94 Sq m (1011 Sq ft) Excludes Lift

For identification only, Not to Scale

capital 020 8671 7722

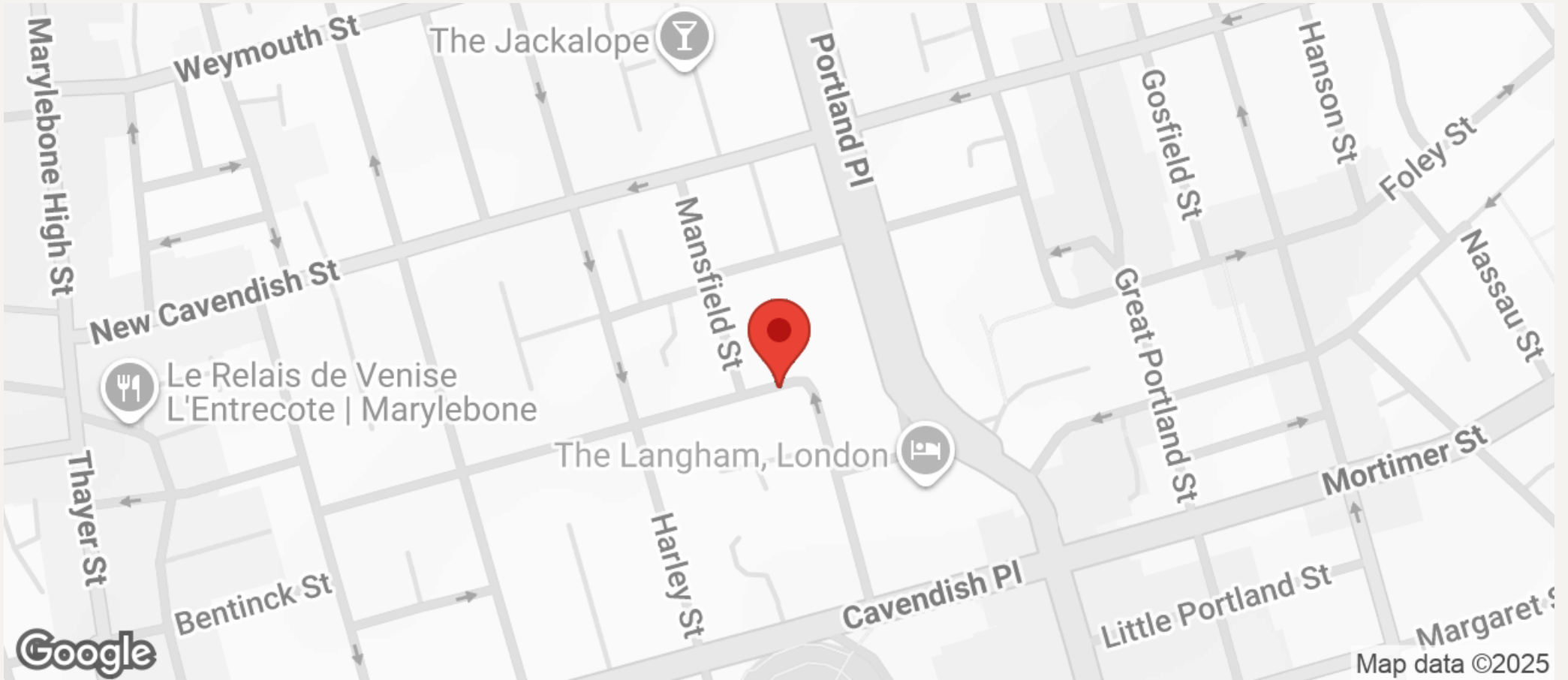


Not to scale, for guidance only and must not be relied upon as a statement of fact. All measurements and areas are approximate only (and have been prepared in accordance with the current edition of the RICS Code of Measuring Practice).



JEREMY JAMES

QUEEN ANNE STREET, MARYLEBONE VILLAGE, LONDON W1G



All negotiations are subject to contract. The Agents are not authorised to make or accept any contractual offer unless prior written notification to the contrary has been given on behalf of the client. In no other case whatsoever are the Agents (or any employee or sub-agent) authorised to make or give any representation or warranty on behalf of any party, and whilst information and particulars are given in all good faith intending purchasers and lessees must satisfy themselves independently as to the accuracy of all matters upon which then intend to rely. Measurements or distances referred to are approximately only. We have not carried out a survey or tested the services, appliances or specific fittings.

33 New Cavendish Street
London,
W1G 9TS

020 7486 4111

jeremyjames@jeremy-james.co.uk