



JEREMY JAMES

HARLEY PLACE, MARYLEBONE VILLAGE, LONDON W1



PRICE

£2,250,000

TENURE

Leasehold

LOCAL AUTHORITY

City of Westminster

33 New Cavendish Street
London,
W1G 9TS

020 7486 4111

jeremyjames@jeremy-james.co.uk



JEREMY JAMES

HARLEY PLACE, MARYLEBONE VILLAGE, LONDON W1



DESCRIPTION

Accommodation comprises: Entrance, Reception room, Three bedrooms, Two bathrooms (One en-suite), Kitchen, Cloakroom, Garage. Large room.

(1809 sq ft) approx.

AMENITIES

Two bathrooms

Garage

Close to stations

33 New Cavendish Street
London,
W1G 9TS

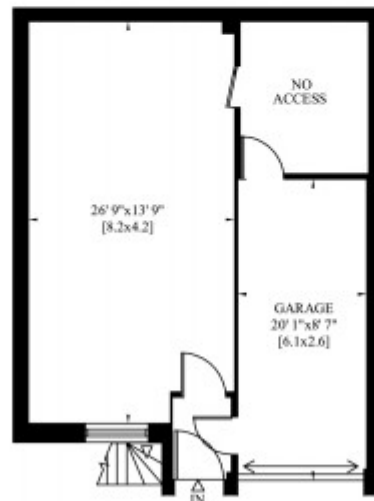
020 7486 4111

jeremyjames@jeremy-james.co.uk

HARLEY PLACE
LONDON W1

Gross Internal Area: 168 Sq. metres
Including Under 1.5m High 1809 Sq.feet

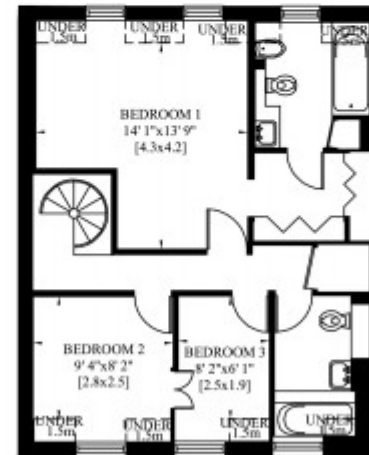
Gross Internal Area: 165 Sq. metres
Excluding Under 1.5m High 1774 Sq.feet



GROUND FLOOR



FIRST FLOOR

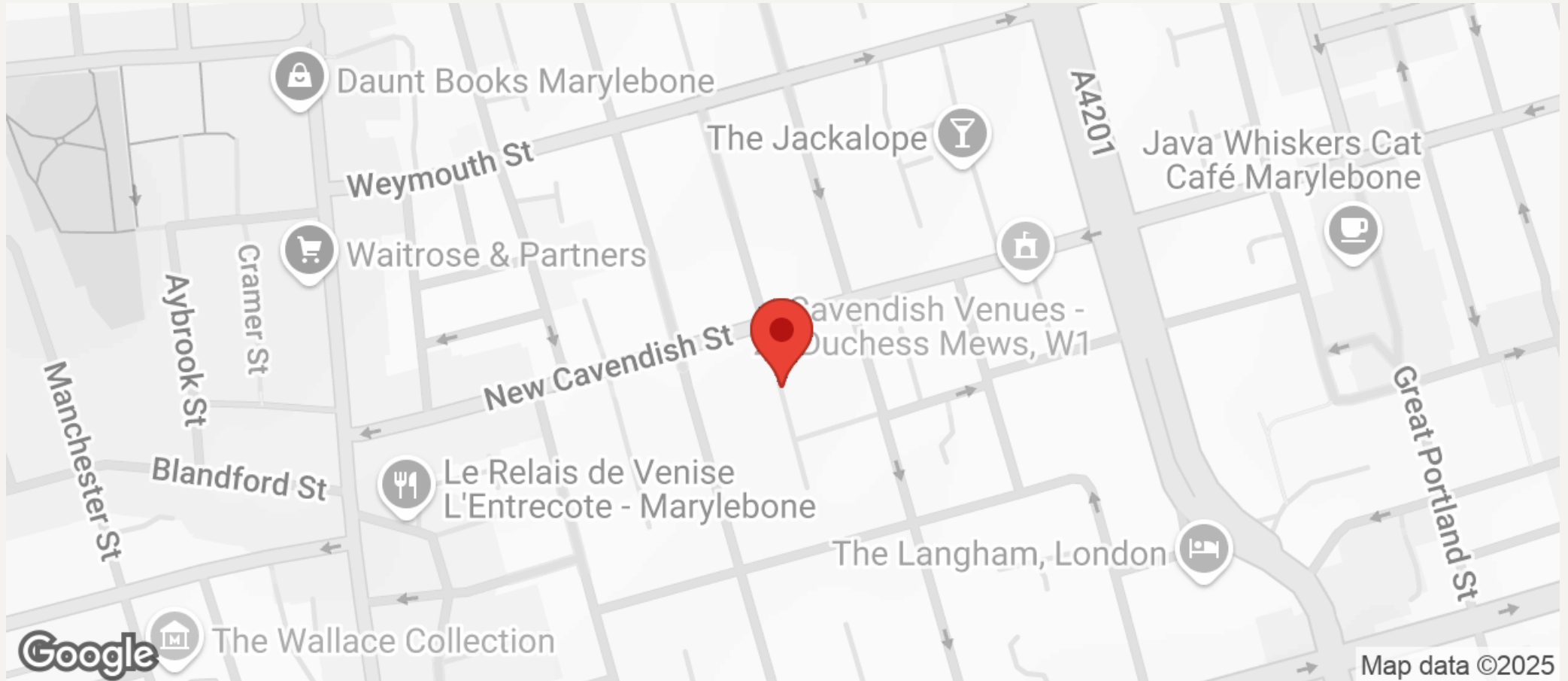


SECOND FLOOR



JEREMY JAMES

HARLEY PLACE, MARYLEBONE VILLAGE, LONDON W1



All negotiations are subject to contract. The Agents are not authorised to make or accept any contractual offer unless prior written notification to the contrary has been given on behalf of the client. In no other case whatsoever are the Agents (or any employee or sub-agent) authorised to make or give any representation or warranty on behalf of any party, and whilst information and particulars are given in all good faith intending purchasers and lessees must satisfy themselves independently as to the accuracy of all matters upon which they intend to rely. Measurements or distances referred to are approximately only. We have not carried out a survey or tested the services, appliances or specific fittings.

33 New Cavendish Street
London,
W1G 9TS

020 7486 4111

jeremyjames@jeremy-james.co.uk