



# JEREMY JAMES

WELBECK STREET, MARYLEBONE VILLAGE, LONDON W1



## PRICE

£695 per week

## FURNISHINGS

Furnished

## DEPOSIT

£3,475

## LOCAL AUTHORITY

City of Westminster

## COUNCIL TAX BAND

D



# JEREMY JAMES

WELBECK STREET, MARYLEBONE VILLAGE, LONDON W1



## DESCRIPTION

The apartment boasts wood flooring throughout and plenty of storage. The accommodation comprises of a fully fitted open plan kitchen, double bedroom with fitted wardrobe and contemporary bathroom.

Bond Street underground station is a short walk away allowing for easy access.

## AMENITIES

1 Bedroom

1 Bathroom

Lift

Recently Renovated

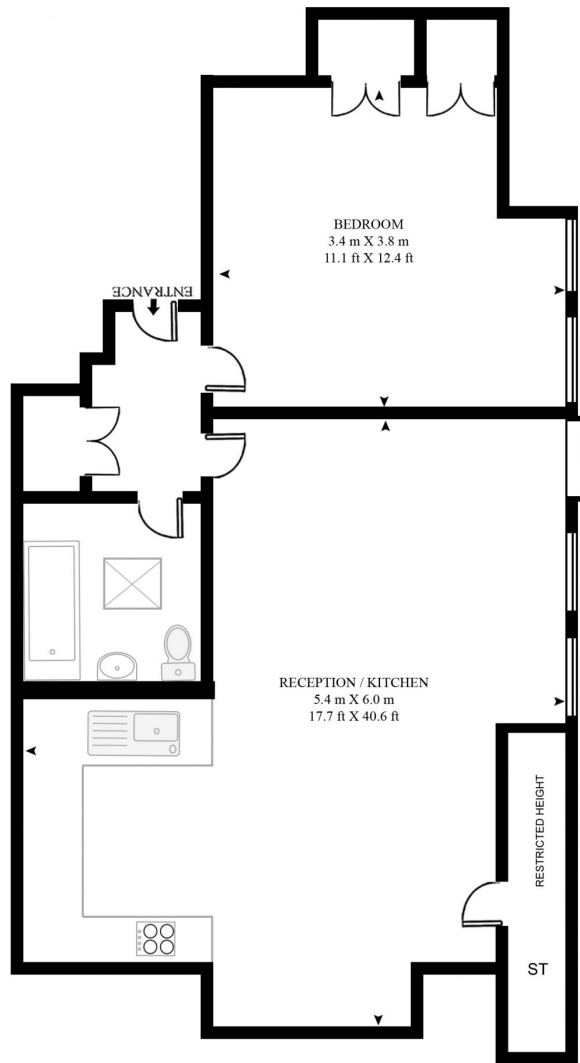
Wood Floors

Plenty of Storage

EPC Rating E

**WELBECK STREET**

APPROXIMATE GROSS INTERNAL FLOOR AREA 439 SQ.FT (40.8 SQ.M)



FOURTH FLOOR



This floor plan has been defined by the RICS Code of Measurement. This floor plan and all others are for approximate representative purposes only and upon usage is agreed to as such by the client.

WWW: [hdvirtualart.com](http://hdvirtualart.com) | TEL: 0207 947 4014 | EMAIL: [info@hdvirtualart.com](mailto:info@hdvirtualart.com)



# JEREMY JAMES

WELBECK STREET, MARYLEBONE VILLAGE, LONDON W1



All negotiations are subject to contract. The Agents are not authorised to make or accept any contractual offer unless prior written notification to the contrary has been given on behalf of the client. In no other case whatsoever are the Agents (or any employee or sub-agent) authorised to make or give any representation or warranty on behalf of any party, and whilst information and particulars are given in all good faith intending purchasers and lessees must satisfy themselves independently as to the accuracy of all matters upon which then intend to rely. Measurements or distances referred to are approximately only. We have not carried out a survey or tested the services, appliances or specific fittings.

33 New Cavendish Street  
London,  
W1G 9TS

020 7486 4111

jeremyjames@jeremy-james.co.uk