



JEREMY JAMES

UPPER WIMPOLE STREET, MARYLEBONE VILLAGE, LONDON W1G



PRICE

£850 per week

FURNISHINGS

Furnished/Unfurnished

DEPOSIT

£4,250

LOCAL AUTHORITY

City of Westminster

COUNCIL TAX BAND

G

33 New Cavendish Street
London,
W1G 9TS

020 7486 4111
jeremyjames@jeremy-james.co.uk



JEREMY JAMES

UPPER WIMPOLE STREET, MARYLEBONE VILLAGE, LONDON W1G



DESCRIPTION

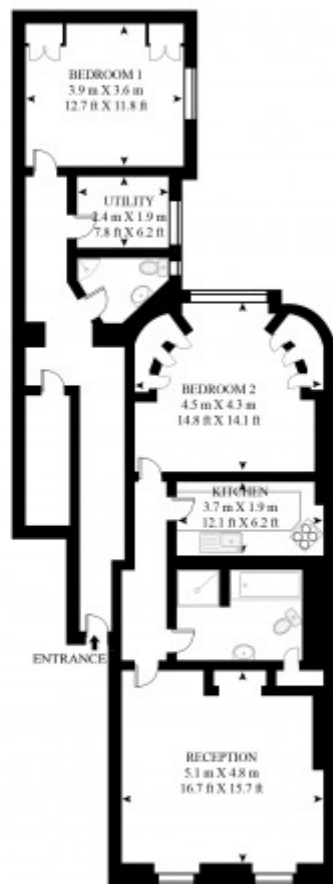
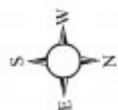
The flat provides generous accommodation comprising of entrance hallway (with wood floors and storage), master double bedroom (with generous storage) second double bedroom, utility room housing washer and dryer, bathroom (fully tiled, with separate bath and shower) shower room (fully tiled), lounge (to front with wood floors) and separate newly fitted kitchen.

AMENITIES

2 Bedrooms
2 Bathrooms
Ground Floor
New Kitchen
Wood Floors
EPC Rating E



UPPER WIMPOLE STREET
APPROXIMATE GROSS INTERNAL FLOOR AREA 1218 SQ.FT (113.2 SQ.M)



GROUND FLOOR



This floor plan has been defined by the RICS Code of Measurement. This floor plan and all others are for approximate representative purposes only and upon usage is agreed to as such by the client.
WWW: hdvirtualart.com | TEL: 0207 947 4014 | EMAIL: info@hdvirtualart.com



JEREMY JAMES

UPPER WIMPOLE STREET, MARYLEBONE VILLAGE, LONDON W1G



All negotiations are subject to contract. The Agents are not authorised to make or accept any contractual offer unless prior written notification to the contrary has been given on behalf of the client. In no other case whatsoever are the Agents (or any employee or sub-agent) authorised to make or give any representation or warranty on behalf of any party, and whilst information and particulars are given in all good faith intending purchasers and lessees must satisfy themselves independently as to the accuracy of all matters upon which they intend to rely. Measurements or distances referred to are approximately only. We have not carried out a survey or tested the services, appliances or specific fittings.

33 New Cavendish Street
London,
W1G 9TS

020 7486 4111

jeremyjames@jeremy-james.co.uk