



JEREMY JAMES

HARLEY STREET, MARYLEBONE VILLAGE, LONDON W1



PRICE

£1,269 per week

FURNISHINGS

Part-furnished

DEPOSIT

£7,615

LOCAL AUTHORITY

City of Westminster

COUNCIL TAX BAND

H

33 New Cavendish Street
London,
W1G 9TS

020 7486 4111

jeremyjames@jeremy-james.co.uk



JEREMY JAMES

HARLEY STREET, MARYLEBONE VILLAGE, LONDON W1



DESCRIPTION

The third floor comprises of reception room with wooden floors, separate kitchen and double bedroom. The fourth floor has two further double bedrooms, 2 bathrooms with the master bedroom benefiting from en suite shower room.

The building is ideally located just a few minutes' walk to Marylebone High Street with its fabulous restaurants, bars and high end boutiques. Bond Street Underground Station is a short walk away with Regents Park also nearby.

AMENITIES

Refurbished to an extremely high standard

Part Furnished

3 bedrooms

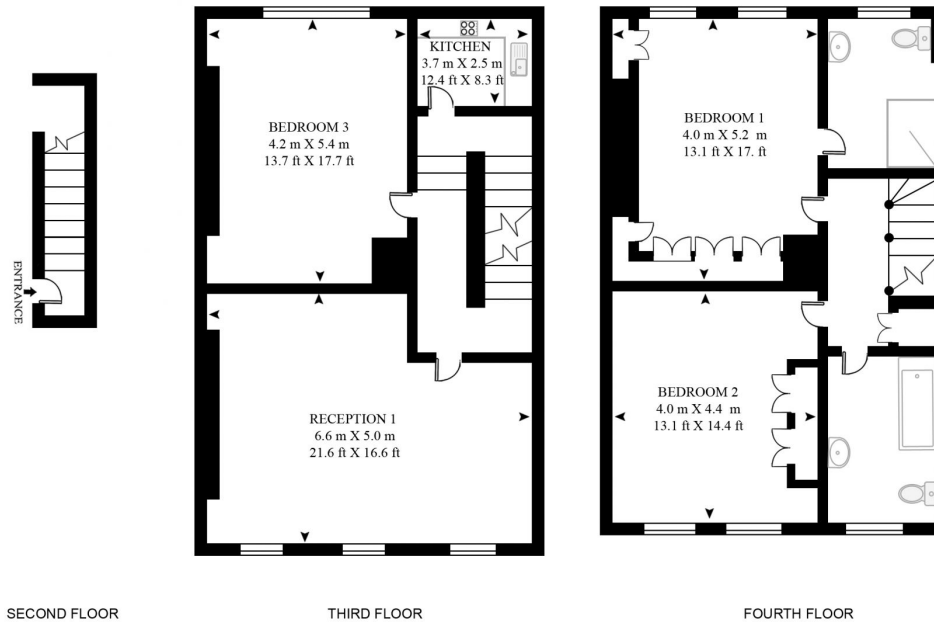
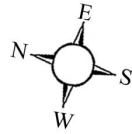
2 bathrooms

Moments from Marylebone High Street

EPC: D

HARLEY STREET

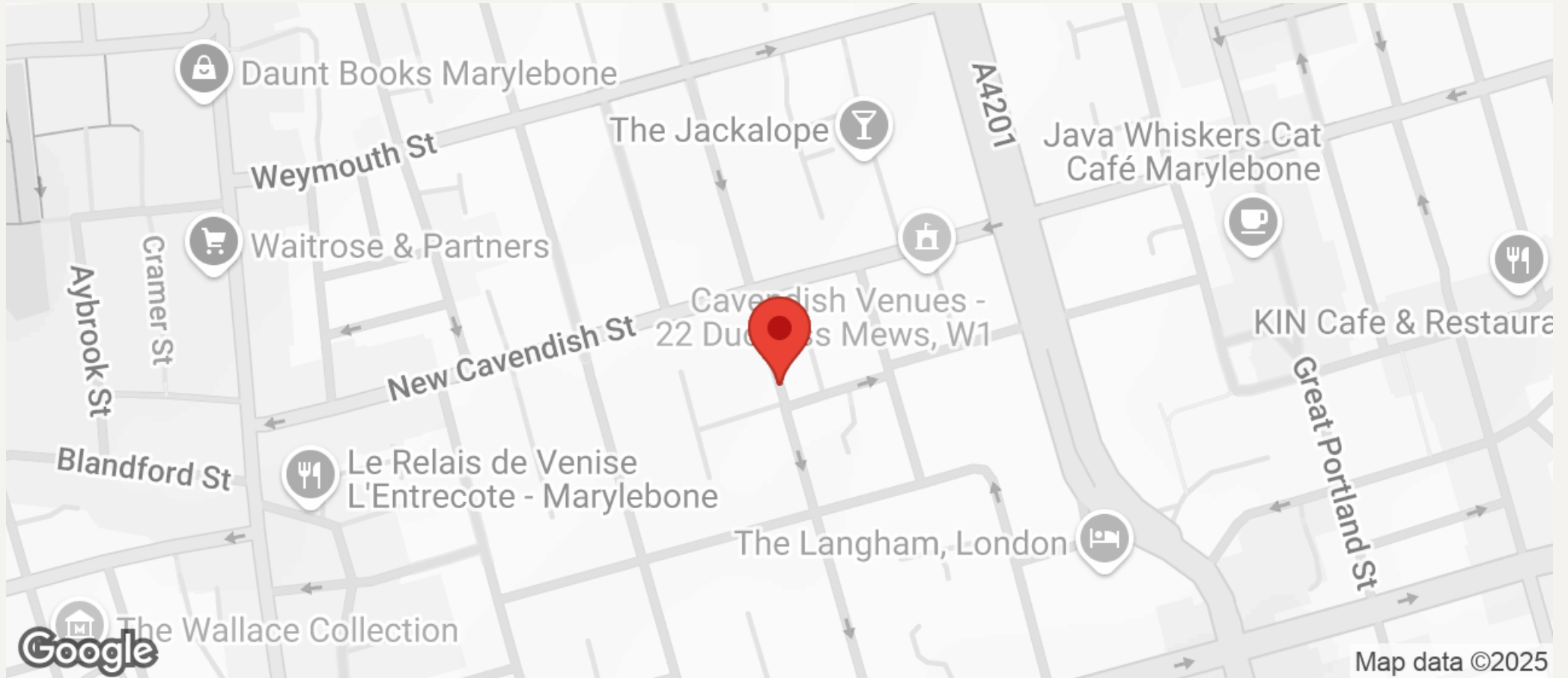
APPROXIMATE GROSS INTERNAL FLOOR AREA 1428 SQ.FT (132.7 SQ.M)





JEREMY JAMES

HARLEY STREET, MARYLEBONE VILLAGE, LONDON W1



All negotiations are subject to contract. The Agents are not authorised to make or accept any contractual offer unless prior written notification to the contrary has been given on behalf of the client. In no other case whatsoever are the Agents (or any employee or sub-agent) authorised to make or give any representation or warranty on behalf of any party, and whilst information and particulars are given in all good faith intending purchasers and lessees must satisfy themselves independently as to the accuracy of all matters upon which they intend to rely. Measurements or distances referred to are approximately only. We have not carried out a survey or tested the services, appliances or specific fittings.

33 New Cavendish Street
London,
W1G 9TS

020 7486 4111

jeremyjames@jeremy-james.co.uk