



# JEREMY JAMES

13 NEW CAVENDISH STREET, MARYLEBONE VILLAGE, LONDON W1G



## PRICE

£1,075 per week

## FURNISHINGS

Furnished

## DEPOSIT

£6,450

## LOCAL AUTHORITY

City of Westminster

## COUNCIL TAX BAND

F

33 New Cavendish Street  
London,  
W1G 9TS

020 7486 4111  
jeremyjames@jeremy-james.co.uk



# JEREMY JAMES

13 NEW CAVENDISH STREET, MARYLEBONE VILLAGE, LONDON W1G



## DESCRIPTION

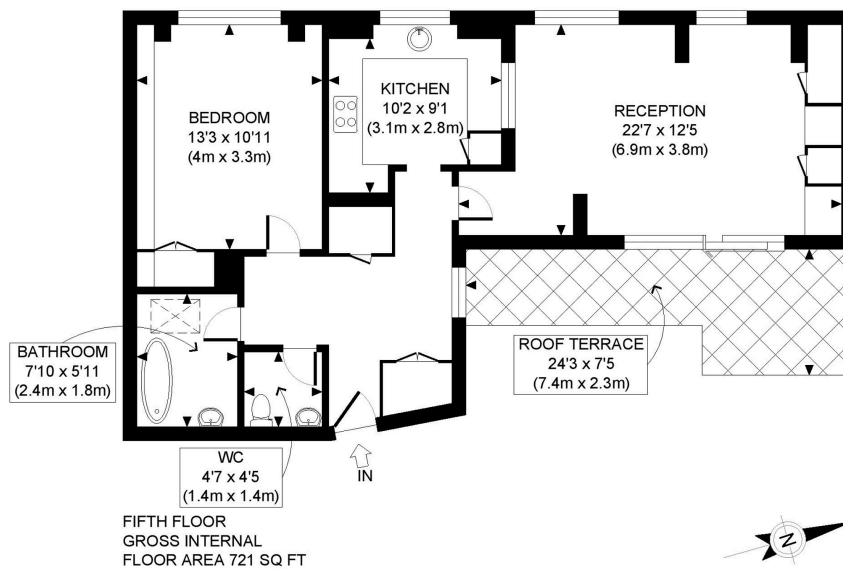
This penthouse apartment comprises of entrance hall, bedroom, reception room, kitchen and recently refurbished bathroom. The apartment benefits from a terrace which is accessible via the reception room, wood flooring throughout and air con.

The building benefits from a day porter and lift.

Kingsley Lodge is located moments from Marylebone High Street moments away from Bond Street and Oxford Circus underground stations together with access to the A40/M40 are within close proximity. The open spaces of Regents Park are also nearby.

## AMENITIES

- One Bedroom
- Air Con
- Terrace
- Lift
- Day Porter
- Top Floor
- EPC: D



APPROX. GROSS INTERNAL FLOOR AREA: 721 SQ FT/ 67 SQM

**PROPERTY PHOTO PLANS**.COUK  
 ONE STOP SHOP FOR PROPERTY MARKETING

This plan is for illustrative purposes only and should be used as such by any prospective client. Whilst every attempt has been made to ensure the accuracy of the Floor Plan contained here, measurements of the doors, windows, rooms and any other items are approximate and no responsibility is taken for any errors, omissions, or misstatement. The services, systems and appliances shown have not been tested and no guarantee as to the operability or efficiency can be given.



# JEREMY JAMES

13 NEW CAVENDISH STREET, MARYLEBONE VILLAGE, LONDON W1G



All negotiations are subject to contract. The Agents are not authorised to make or accept any contractual offer unless prior written notification to the contrary has been given on behalf of the client. In no other case whatsoever are the Agents (or any employee or sub-agent) authorised to make or give any representation or warranty on behalf of any party, and whilst information and particulars are given in all good faith intending purchasers and lessees must satisfy themselves independently as to the accuracy of all matters upon which then intend to rely. Measurements or distances referred to are approximately only. We have not carried out a survey or tested the services, appliances or specific fittings.

33 New Cavendish Street  
London,  
W1G 9TS

020 7486 4111

jeremyjames@jeremy-james.co.uk