



JEREMY JAMES

SHERWOOD COURT, SHOULDHAM STREET, LONDON W1



PRICE

£1,195,000

TENURE

Leasehold - 98 Years

SERVICE CHARGE

£4,000 per annum

LOCAL AUTHORITY

City of Westminster

COUNCIL TAX BAND

F

33 New Cavendish Street
London,
W1G 9TS

020 7486 4111
jeremyjames@jeremy-james.co.uk



JEREMY JAMES

SHERWOOD COURT, SHOULDHAM STREET, LONDON W1



DESCRIPTION

Sherwood Court is well located just a short walk from Marylebone High Street, Baker Street, Marble Arch, Oxford Street and the open spaces of Hyde Park. Nearby transport links include Baker Street (Bakerloo line, Metropolitan line, Jubilee and Circle and Hammersmith & City) and Marylebone Train Station (Bakerloo line and National Rail Services).

AMENITIES

2 bedrooms

2 bathrooms

937 sq ft (87.1 sq m)

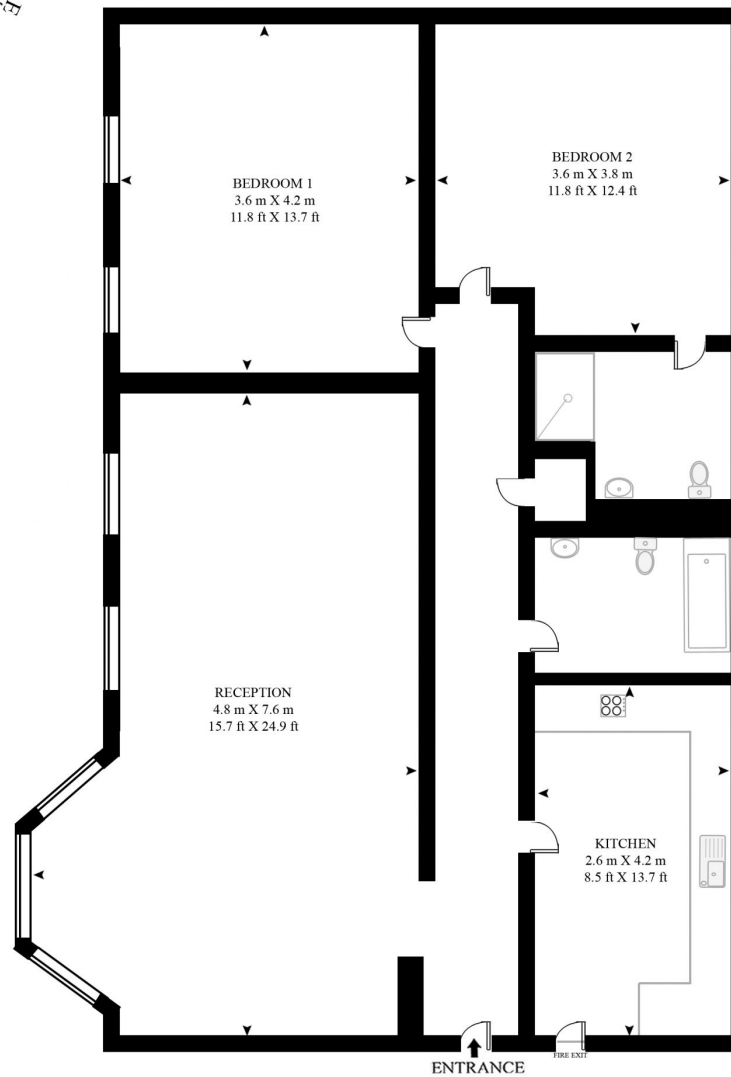
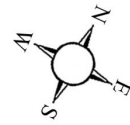
Caretaker

33 New Cavendish Street
London,
W1G 9TS

020 7486 4111
jeremyjames@jeremy-james.co.uk

SHOULDHAM STREET

APPROXIMATE GROSS INTERNAL FLOOR AREA 937 SQ.FT (87.1 SQ.M)



SECOND FLOOR



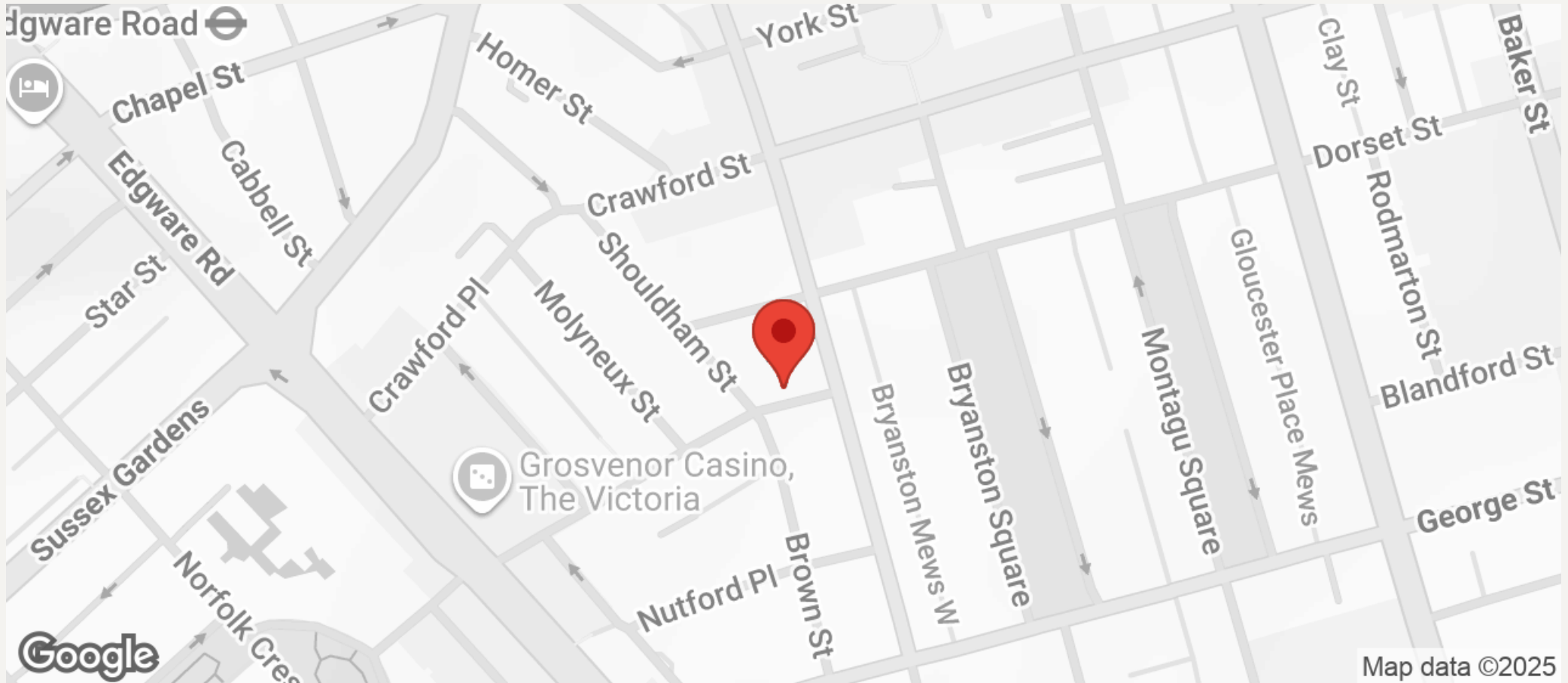
This floor plan has been defined by the RICS Code of Measurement. This floor plan and all others are for approximate representative purposes only and upon usage is agreed to as such by the client.

WWW: hdvirtualart.com | TEL: 0207 947 4014 | EMAIL: info@hdvirtualart.com



JEREMY JAMES

SHERWOOD COURT, SHOULDHAM STREET, LONDON W1



All negotiations are subject to contract. The Agents are not authorised to make or accept any contractual offer unless prior written notification to the contrary has been given on behalf of the client. In no other case whatsoever are the Agents (or any employee or sub-agent) authorised to make or give any representation or warranty on behalf of any party, and whilst information and particulars are given in all good faith intending purchasers and lessees must satisfy themselves independently as to the accuracy of all matters upon which then intend to rely. Measurements or distances referred to are approximately only. We have not carried out a survey or tested the services, appliances or specific fittings.

33 New Cavendish Street
London,
W1G 9TS

020 7486 4111

jeremyjames@jeremy-james.co.uk