



JEREMY JAMES

UPPER WIMPOLE STREET, MARYLEBONE VILLAGE, LONDON, W1



PRICE

£750 per week

FURNISHINGS

Furnished

DEPOSIT

£3,750

LOCAL AUTHORITY

City of Westminster

COUNCIL TAX BAND

F

33 New Cavendish Street
London,
W1G 9TS

020 7486 4111
jeremyjames@jeremy-james.co.uk



JEREMY JAMES

UPPER WIMPOLE STREET, MARYLEBONE VILLAGE, LONDON, W1



DESCRIPTION

The accommodation comprises of a spacious sitting room, separate kitchen, large bedroom and bathroom en-suite.

FURNISHED

AMENITIES

Spacious

2nd Floor

Furnished

EPC Rating D

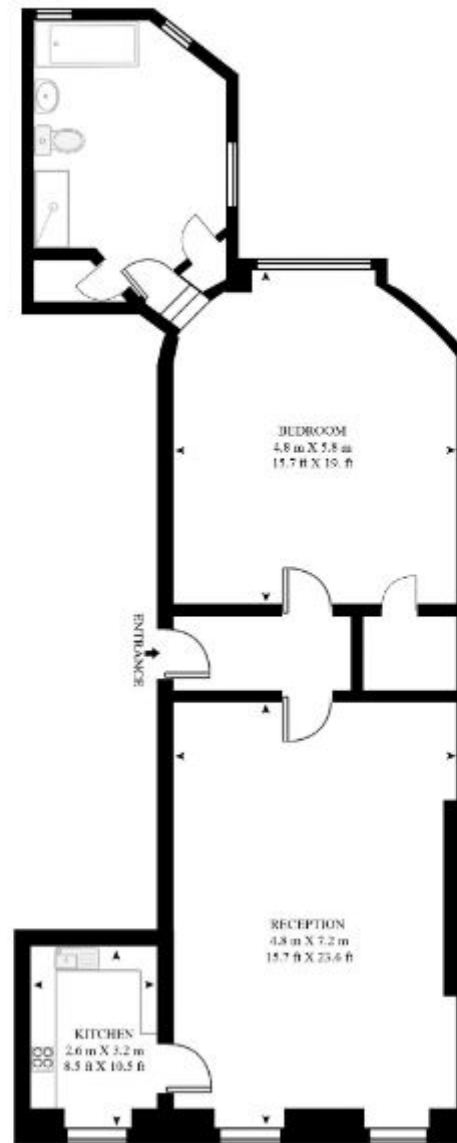


33 New Cavendish Street
London,
W1G 9TS

020 7486 4111
jeremyjames@jeremy-james.co.uk

UPPER WIMPOLE STREET

APPROXIMATE GROSS INTERNAL FLOOR AREA 981 SQ.FT (91.2 SQ.M)

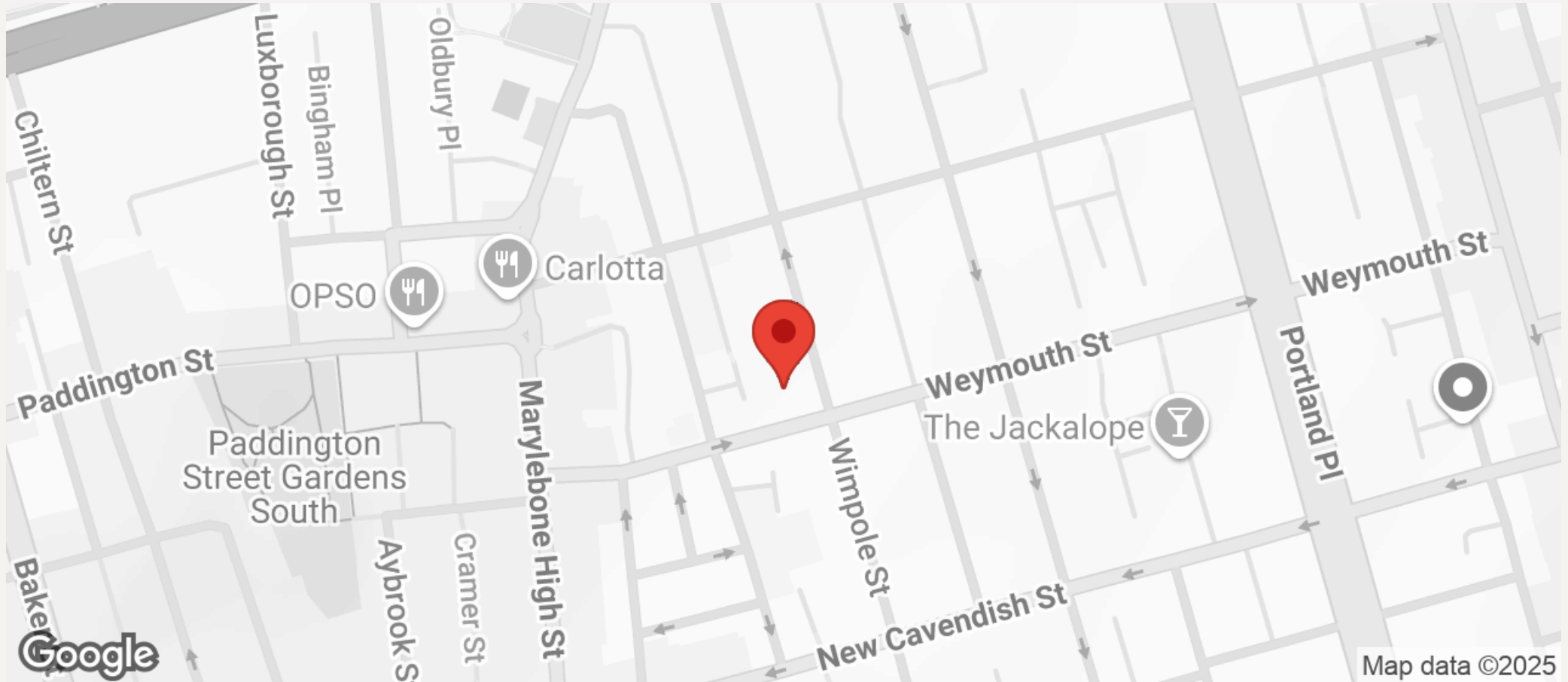


SECOND FLOOR



JEREMY JAMES

UPPER WIMPOLE STREET, MARYLEBONE VILLAGE, LONDON, W1



All negotiations are subject to contract. The Agents are not authorised to make or accept any contractual offer unless prior written notification to the contrary has been given on behalf of the client. In no other case whatsoever are the Agents (or any employee or sub-agent) authorised to make or give any representation or warranty on behalf of any party, and whilst information and particulars are given in all good faith intending purchasers and lessees must satisfy themselves independently as to the accuracy of all matters upon which then intend to rely. Measurements or distances referred to are approximately only. We have not carried out a survey or tested the services, appliances or specific fittings.

33 New Cavendish Street
London,
W1G 9TS

020 7486 4111

jeremyjames@jeremy-james.co.uk