



JEREMY JAMES

HARLEY STREET, HARLEY STREET MEDICAL DISTRICT, LONDON W1G



RENT

£81,372 per annum

LOCAL AUTHORITY

City of Westminster

BUSINESS RATES

Approx £33,271 per annum

33 New Cavendish Street
London,
W1G 9TS

020 7486 4111
jeremyjames@jeremy-james.co.uk



JEREMY JAMES

HARLEY STREET, HARLEY STREET MEDICAL DISTRICT, LONDON W1G



DESCRIPTION

This medical suite located on the second floor on the west side of Harley Street, close to the junction with Weymouth Street.

Local transport links include underground stations; Oxford Circus, Bond Street, Baker Street and Regents Park. Mainline stations nearby include Marylebone and Paddington as well as King Cross and St Pancras, allowing easy access to Heathrow airport. Parking is available on the street or alternatively there is an NCP car park moments away.

AMENITIES

Passenger lift

Communal waiting room

In the heart of the medical district

Original Features

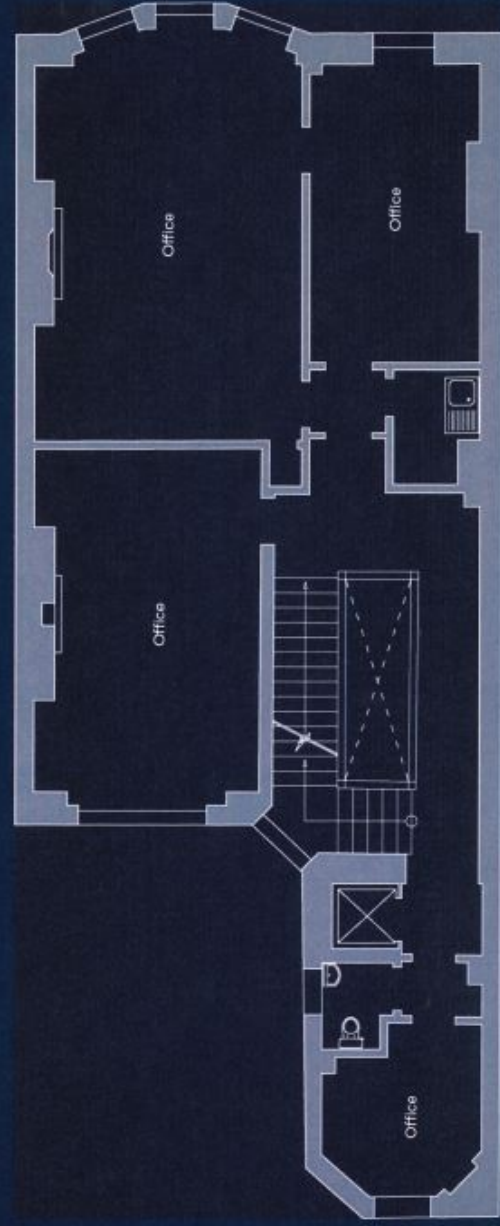
33 New Cavendish Street
London,
W1G 9TS

020 7486 4111

jeremyjames@jeremy-james.co.uk

101
HARLEY
STREET

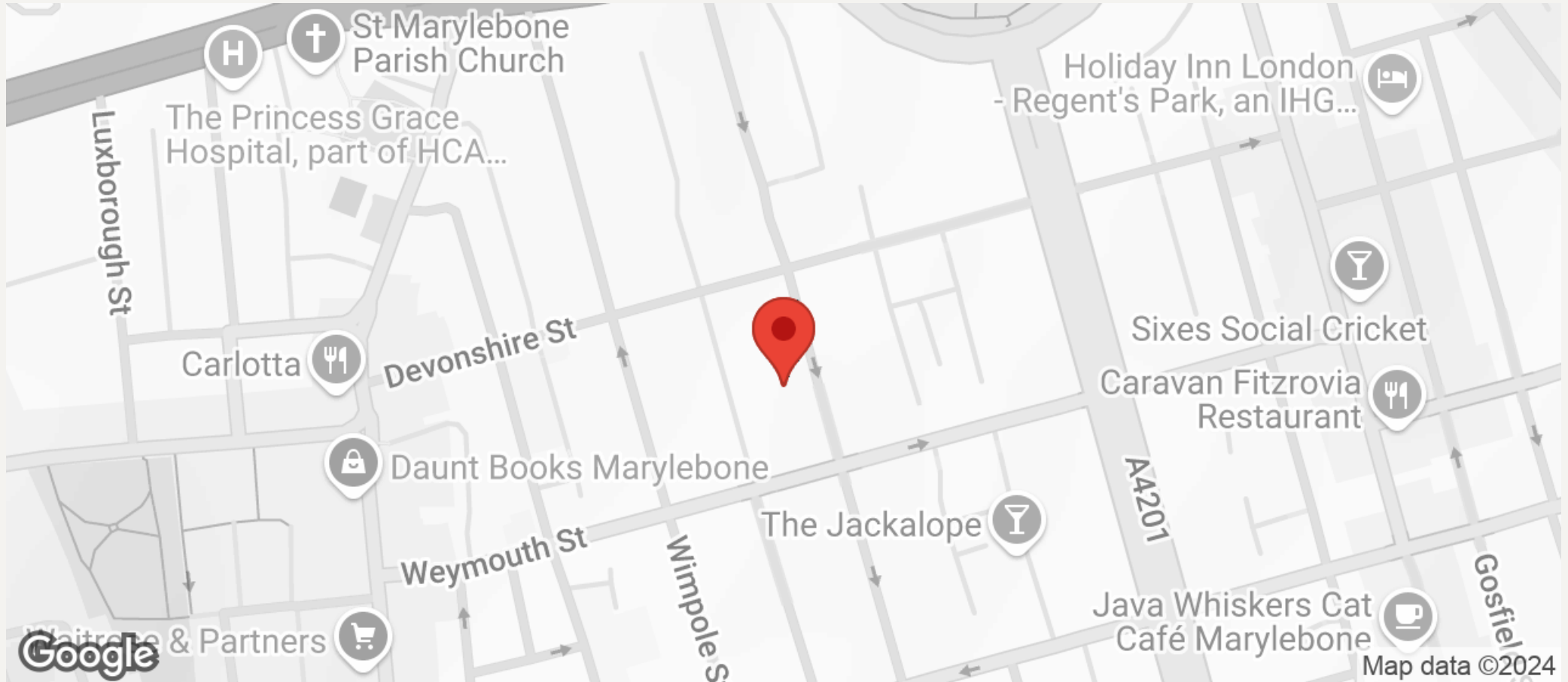
SECOND FLOOR 926 SQ FT - MEDICAL USE





JEREMY JAMES

HARLEY STREET, HARLEY STREET MEDICAL DISTRICT, LONDON W1G



All negotiations are subject to contract. The Agents are not authorised to make or accept any contractual offer unless prior written notification to the contrary has been given on behalf of the client. In no other case whatsoever are the Agents (or any employee or sub-agent) authorised to make or give any representation or warranty on behalf of any party, and whilst information and particulars are given in all good faith intending purchasers and lessees must satisfy themselves independently as to the accuracy of all matters upon which then intend to rely. Measurements or distances referred to are approximately only. We have not carried out a survey or tested the services, appliances or specific fittings.

33 New Cavendish Street
London,
W1G 9TS

020 7486 4111

jeremyjames@jeremy-james.co.uk