



**JEREMY JAMES**

**BULSTRODE STREET, MARYLEBONE, W1**



**PRICE**

£395 per week

**FURNISHINGS**

Part-furnished

**DEPOSIT**

£1,975

**LOCAL AUTHORITY**

City of Westminster

**COUNCIL TAX BAND**

H

33 New Cavendish Street  
London,  
W1G 9TS

020 7486 4111  
jeremyjames@jeremy-james.co.uk



# JEREMY JAMES

## BULSTRODE STREET, MARYLEBONE, W1



### DESCRIPTION

This charming bright studio apartment boasts a spacious living area, bathroom offering a bath and separate walk in shower.

Bond Street and Baker Street underground stations together with the shopping facilities of Marylebone High Street are within close proximity. The open spaces of Regents Park are also nearby.

### AMENITIES

Part-furnished

Located moments from Marylebone High Street

Studio

Second Floor

EPC Rating C



33 New Cavendish Street  
London,

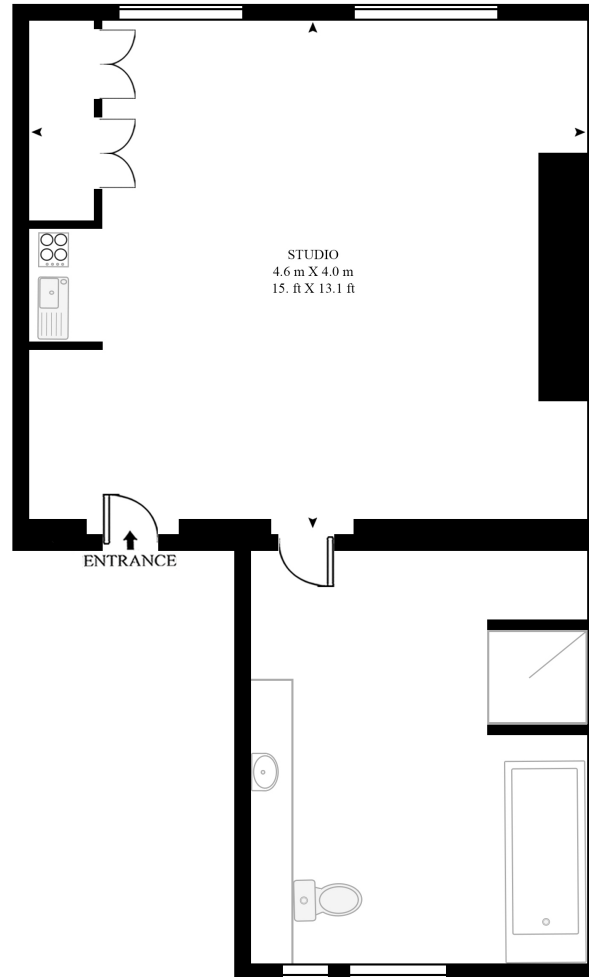
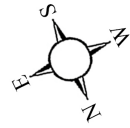
W1G 9TS

020 7486 4111

[jeremyjames@jeremy-james.co.uk](mailto:jeremyjames@jeremy-james.co.uk)

**BULSTRODE STREET**

APPROXIMATE GROSS INTERNAL FLOOR AREA 316 SQ.FT (29.4 SQ.M)



SECOND FLOOR



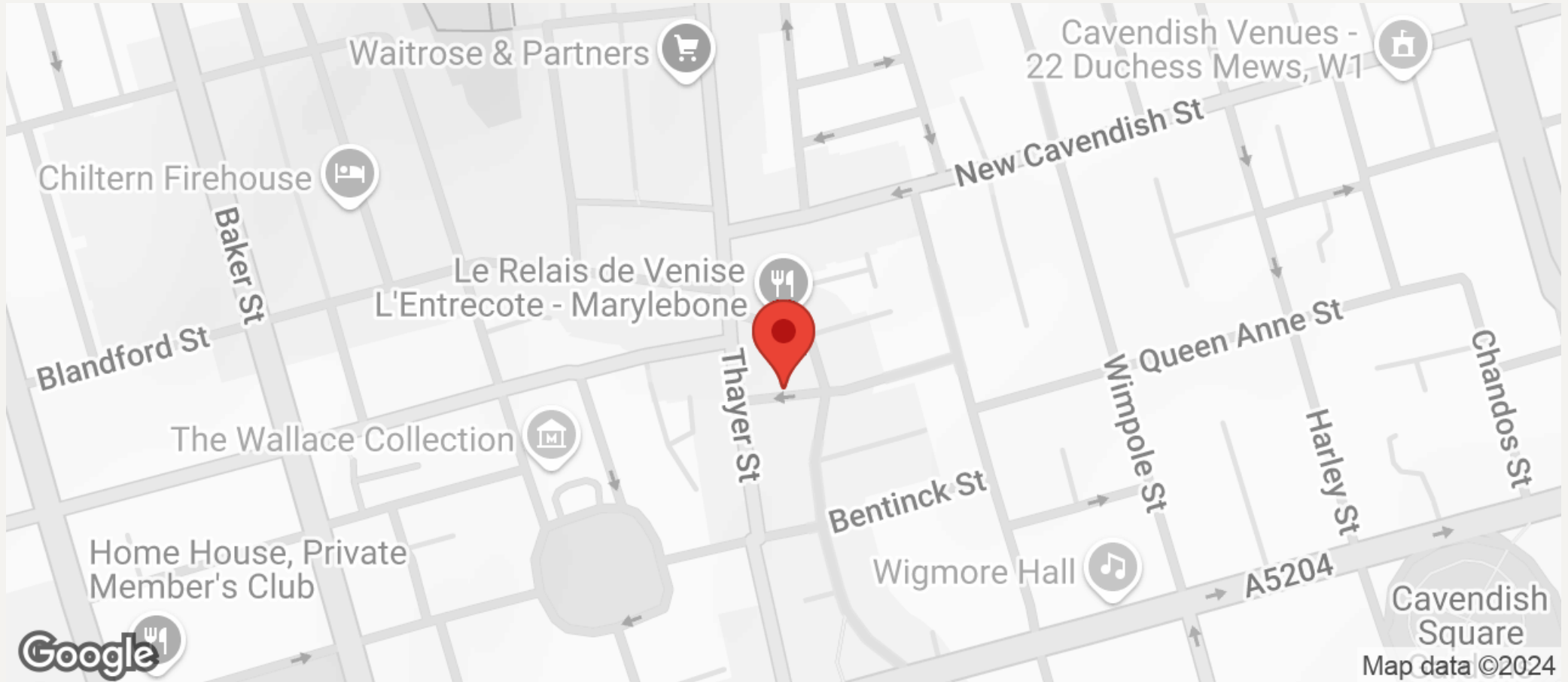
This floor plan has been defined by the RICS Code of Measurement. This floor plan and all others are for approximate representative purposes only and upon usage is agreed to as such by the client.

WWW: [hdvirtualart.com](http://hdvirtualart.com) | TEL: 0207 947 4014 | EMAIL: [info@hdvirtualart.com](mailto:info@hdvirtualart.com)



# JEREMY JAMES

BULSTRODE STREET, MARYLEBONE, W1



All negotiations are subject to contract. The Agents are not authorised to make or accept any contractual offer unless prior written notification to the contrary has been given on behalf of the client. In no other case whatsoever are the Agents (or any employee or sub-agent) authorised to make or give any representation or warranty on behalf of any party, and whilst information and particulars are given in all good faith intending purchasers and lessees must satisfy themselves independently as to the accuracy of all matters upon which then intend to rely. Measurements or distances referred to are approximately only. We have not carried out a survey or tested the services, appliances or specific fittings.

33 New Cavendish Street  
London,  
W1G 9TS

020 7486 4111

jeremyjames@jeremy-james.co.uk