



JEREMY JAMES

HERON PLACE, MARYLEBONE VILLAGE, LONDON W1



PRICE

£3,790,000

TENURE

Leasehold - 150 Years

SERVICE CHARGE

£6,717 per annum

GROUND RENT

£250 per annum

LOCAL AUTHORITY

City of Westminster

COUNCIL TAX BAND

G



JEREMY JAMES

HERON PLACE, MARYLEBONE VILLAGE, LONDON W1



DESCRIPTION

Stunning interior designed lateral apartment of approximately 2217 sq.ft. (206 sq.m.).

Enviably located, this purpose built building is located on the corner of Thayer Street and George Street, in the centre of one of London's most prestigious Villages.

Marylebone Village offers an exceptional selection of shopping, cuisine and lifestyle that London has to offer. The quiet spaces of Regents Park or Hyde Park are within a short stroll. Accommodation comprises; Entrance hall, Reception room, Kitchen/Dining room, Master bedroom with ensuite bathroom, Second bedroom with ensuite bathroom, Third bedroom, Family bathroom, Excellent storage and balcony.

A car parking space is available by separate negotiation.

AMENITIES

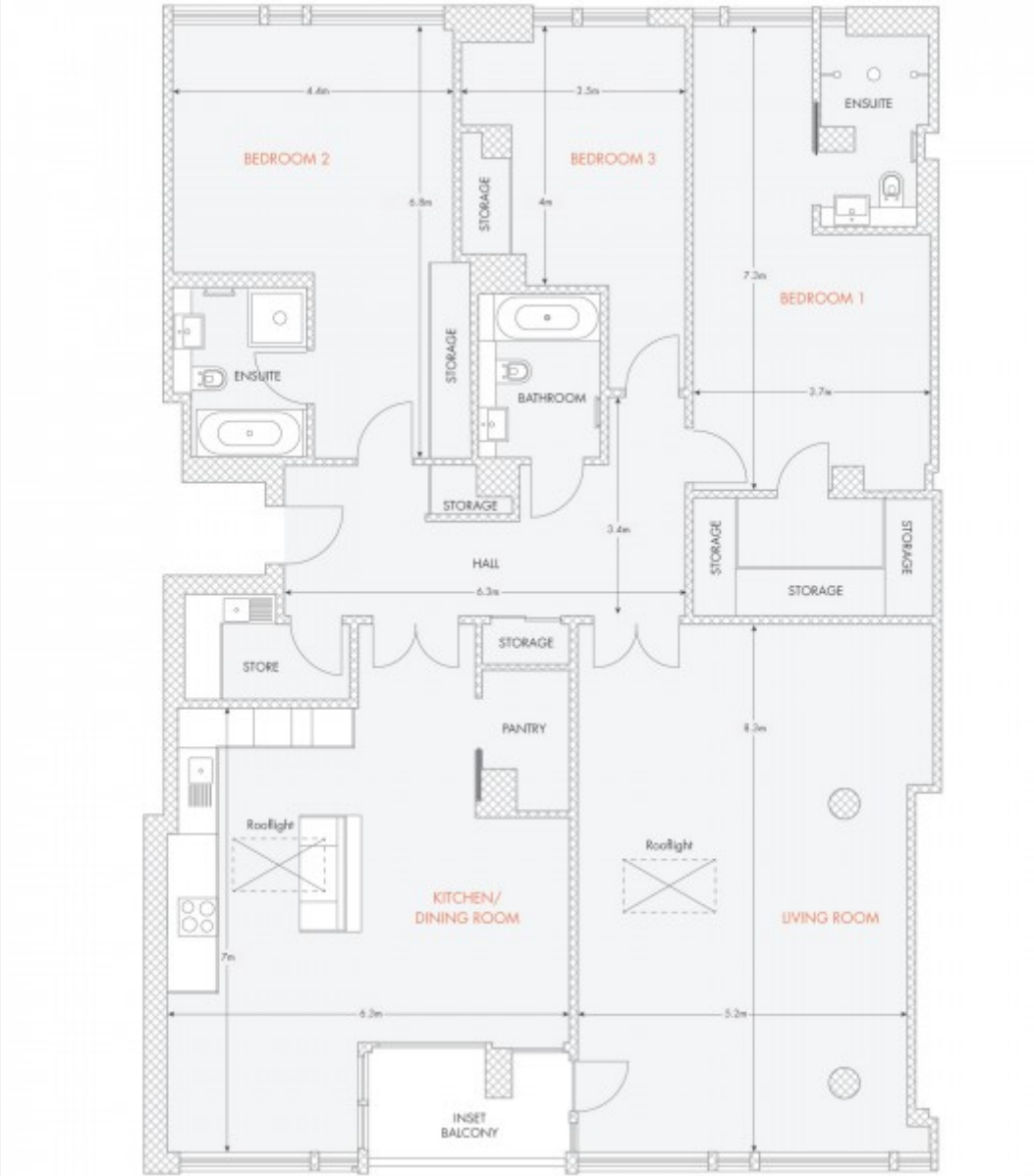
Unique new development

Passenger lift

Comfort cooling

Parking available

In the heart of Marylebone Village





JEREMY JAMES

HERON PLACE, MARYLEBONE VILLAGE, LONDON W1



All negotiations are subject to contract. The Agents are not authorised to make or accept any contractual offer unless prior written notification to the contrary has been given on behalf of the client. In no other case whatsoever are the Agents (or any employee or sub-agent) authorised to make or give any representation or warranty on behalf of any party, and whilst information and particulars are given in all good faith intending purchasers and lessees must satisfy themselves independently as to the accuracy of all matters upon which then intend to rely. Measurements or distances referred to are approximately only. We have not carried out a survey or tested the services, appliances or specific fittings.

33 New Cavendish Street
London,
W1G 9TS

020 7486 4111

jeremyjames@jeremy-james.co.uk