



JEREMY JAMES

WEYMOUTH STREET, MARYLEBONE VILLAGE, LONDON W1G



PRICE

£975 per week

FURNISHINGS

Unfurnished

DEPOSIT

£5,850

LOCAL AUTHORITY

City of Westminster

COUNCIL TAX BAND

G

33 New Cavendish Street
London,
W1G 9TS

020 7486 4111
jeremyjames@jeremy-james.co.uk



JEREMY JAMES

WEYMOUTH STREET, MARYLEBONE VILLAGE, LONDON W1G



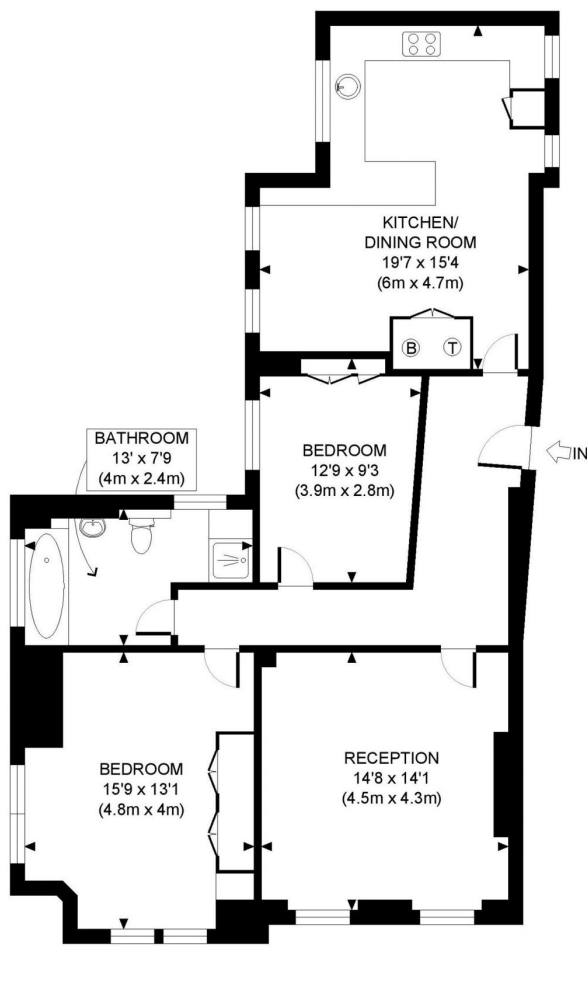
DESCRIPTION

A top floor apartment with lift comprising of entrance hall, reception room, two double bedrooms, bathroom and kitchen.

The building is located on the north side of Weymouth Street located moments from Marylebone High Street, with it's fashionable restaurants, high end boutiques and bustling cafes. Both Bond Street and Baker Street Underground Station are within close proximity. The green open spaces of Regents Park are also close by.

AMENITIES

Lift
Top Floor
2 Bedrooms
Porter
EPC: E



FIFTH FLOOR
GROSS INTERNAL
FLOOR AREA 1030 SQ FT

APPROX. GROSS INTERNAL FLOOR AREA: 1030 SQ FT/ 96 SQM

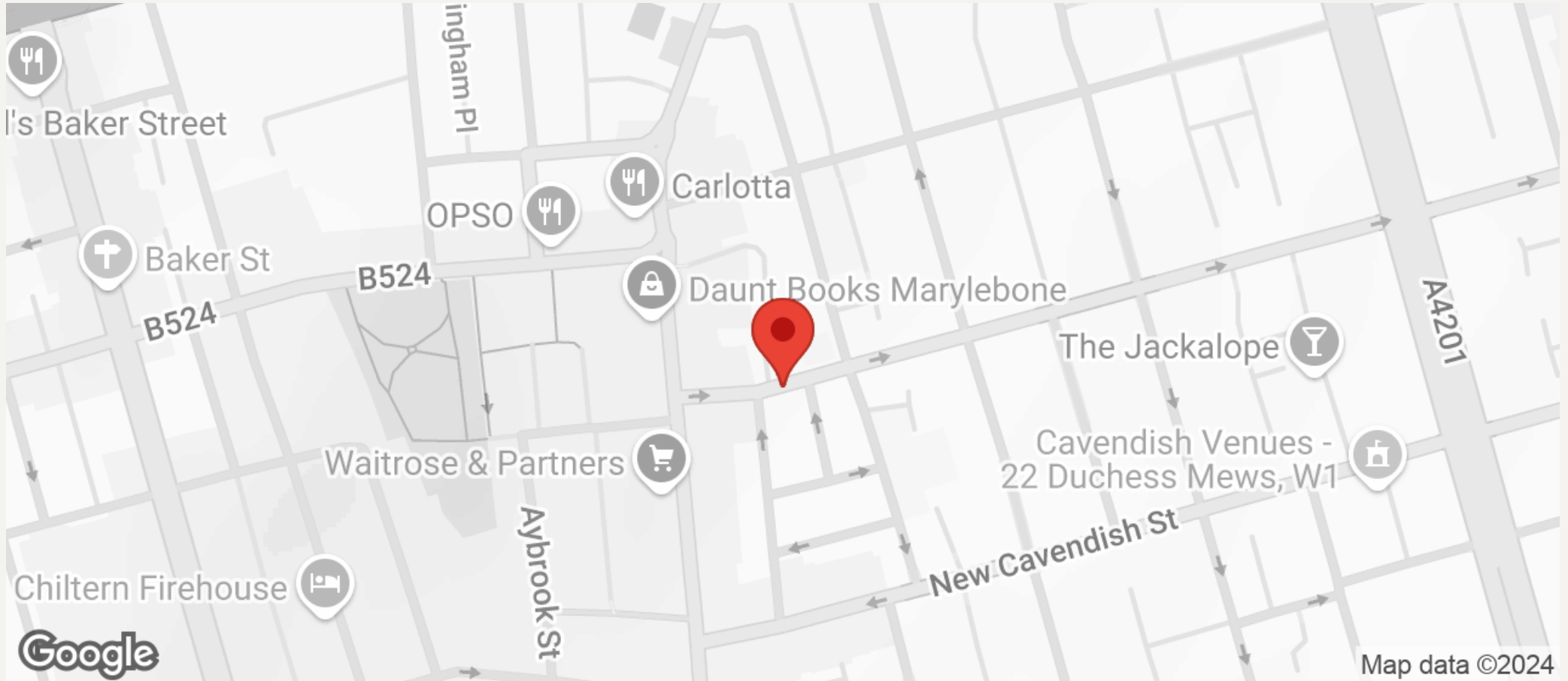
PROPERTY PHOTO PLANS.COUK
ONE STOP SHOP FOR PROPERTY MARKETING

This plan is for illustrative purposes only and should be used as such by any prospective client. Whilst every attempt has been made to ensure the accuracy of the Floor Plan contained here, measurements of the doors, windows, rooms and any other items are approximate and no responsibility is taken for any errors, omissions, or misstatement. The services, systems and appliances shown have not been tested and no guarantee as to the operability or efficiency can be given.



JEREMY JAMES

WEYMOUTH STREET, MARYLEBONE VILLAGE, LONDON W1G



All negotiations are subject to contract. The Agents are not authorised to make or accept any contractual offer unless prior written notification to the contrary has been given on behalf of the client. In no other case whatsoever are the Agents (or any employee or sub-agent) authorised to make or give any representation or warranty on behalf of any party, and whilst information and particulars are given in all good faith intending purchasers and lessees must satisfy themselves independently as to the accuracy of all matters upon which then intend to rely. Measurements or distances referred to are approximately only. We have not carried out a survey or tested the services, appliances or specific fittings.

33 New Cavendish Street
London,
W1G 9TS

020 7486 4111

jeremyjames@jeremy-james.co.uk