



# JEREMY JAMES

WEYMOUTH STREET, MARYLEBONE VILLAGE, LONDON W1.



## PRICE

£725 per week

## FURNISHINGS

Furnished

## DEPOSIT

£3,625

## LOCAL AUTHORITY

City of Westminster

## COUNCIL TAX BAND

E

33 New Cavendish Street  
London,  
W1G 9TS

020 7486 4111  
[jeremyjames@jeremy-james.co.uk](mailto:jeremyjames@jeremy-james.co.uk)



# JEREMY JAMES

WEYMOUTH STREET, MARYLEBONE VILLAGE, LONDON W1.



## DESCRIPTION

The apartment has been tastefully furnished to a high standard providing lovely entertaining space. Comprising of separate kitchen, reception room, double bedroom with en-suite bathroom and guest cloakroom.

Located a stones throw from Marylebone High Street and it's wide range of fashionable restaurants, cafes and boutiques, the property enjoys an excellent location and is also well situated for the public transport being within walking distance of both Baker Street and Bond street underground stations, together with Regents Park and other nearby green spaces.

## AMENITIES

One Bedroom

One Bathroom

Guest W/C

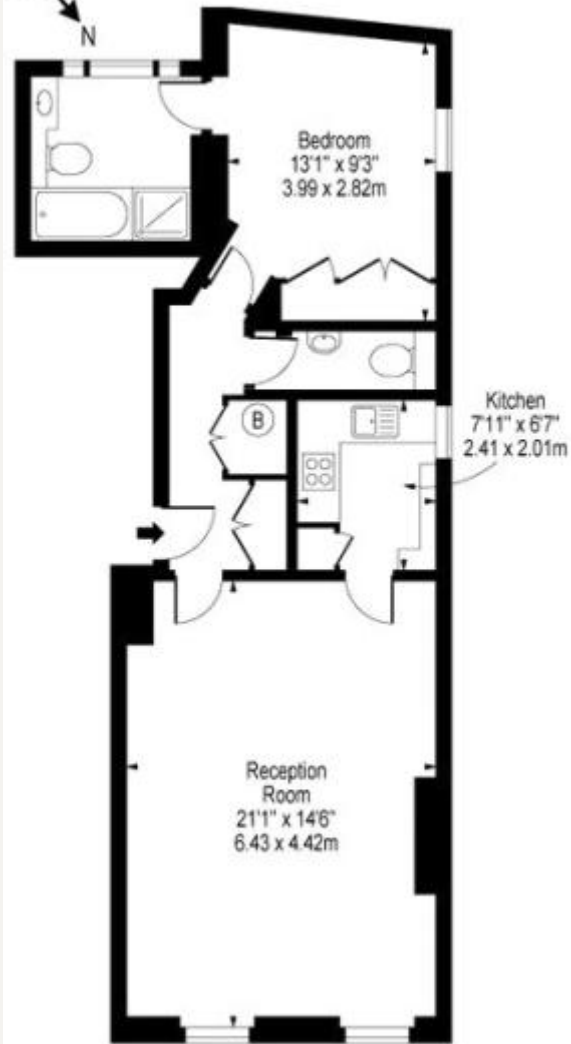
Located Moments from Marylebone High Street

Working Gas Fire

33 New Cavendish Street  
London,  
W1G 9TS

020 7486 4111  
[jeremyjames@jeremy-james.co.uk](mailto:jeremyjames@jeremy-james.co.uk)

Weymouth Street,  
Marylebone, W1G

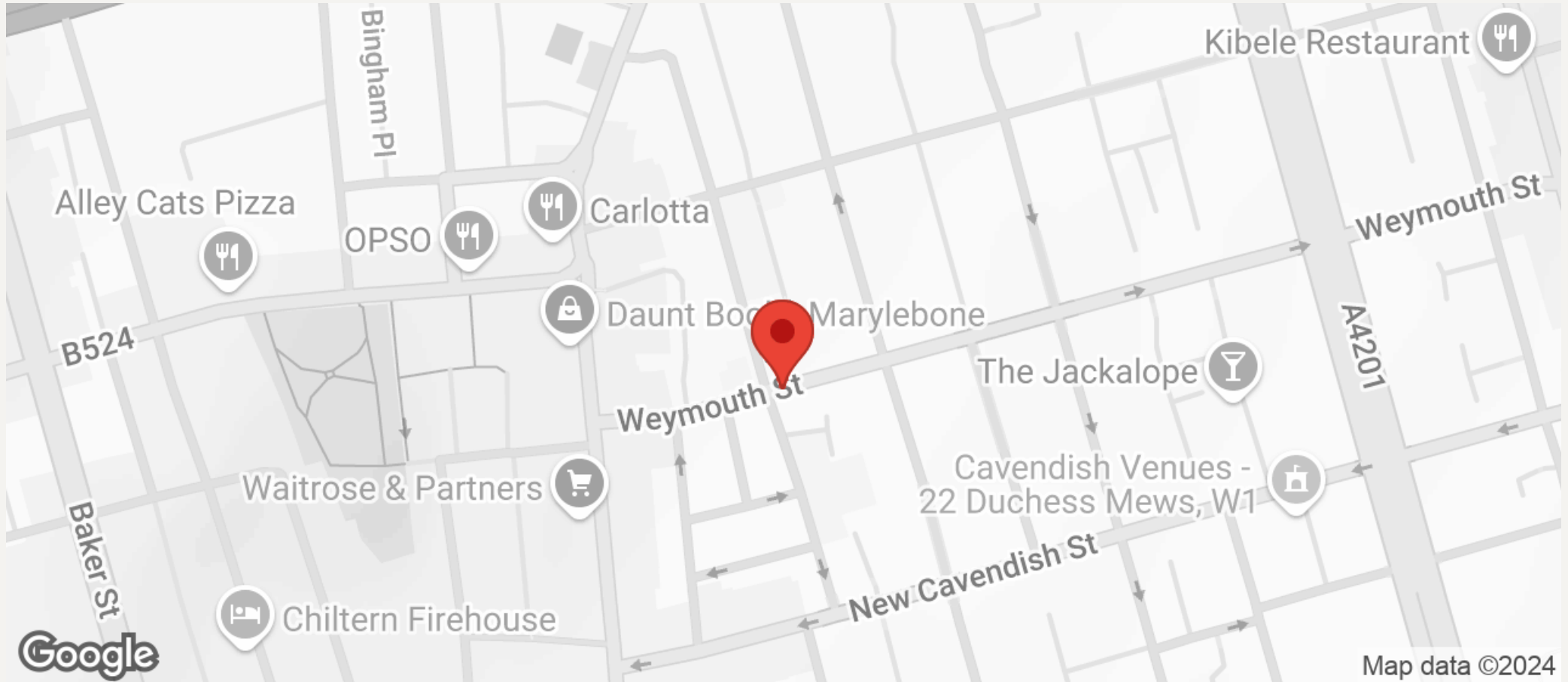


Ground Floor



# JEREMY JAMES

WEYMOUTH STREET, MARYLEBONE VILLAGE, LONDON W1.



All negotiations are subject to contract. The Agents are not authorised to make or accept any contractual offer unless prior written notification to the contrary has been given on behalf of the client. In no other case whatsoever are the Agents (or any employee or sub-agent) authorised to make or give any representation or warranty on behalf of any party, and whilst information and particulars are given in all good faith intending purchasers and lessees must satisfy themselves independently as to the accuracy of all matters upon which then intend to rely. Measurements or distances referred to are approximately only. We have not carried out a survey or tested the services, appliances or specific fittings.

33 New Cavendish Street  
London,  
W1G 9TS

020 7486 4111

[jeremyjames@jeremy-james.co.uk](mailto:jeremyjames@jeremy-james.co.uk)