



JEREMY JAMES

UPPER WIMPOLE STREET, MARYLEBONE VILLAGE, LONDON, W1



PRICE

£900 per week

FURNISHINGS

Furnished/Unfurnished

DEPOSIT

£4,500

LOCAL AUTHORITY

City of Westminster

COUNCIL TAX BAND

G

33 New Cavendish Street
London,
W1G 9TS

020 7486 4111
jeremyjames@jeremy-james.co.uk



JEREMY JAMES

UPPER WIMPOLE STREET, MARYLEBONE VILLAGE, LONDON, W1



DESCRIPTION

The accommodation comprises of two double bedrooms, two bathrooms, a separate cloakroom, kitchen and spacious sitting room with wooden floors throughout.

It benefits from high ceilings and it's own patio garden.

AMENITIES

Wood Floors

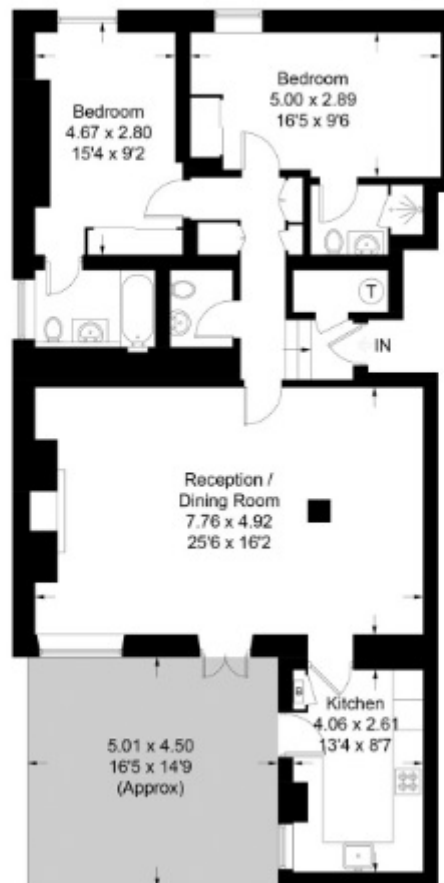
Spacious

Energy Performance D

Outside Space

Upper Wimpole Street, W1G

Approximate Gross Internal Area = 104.5 sq m / 1125 sq ft

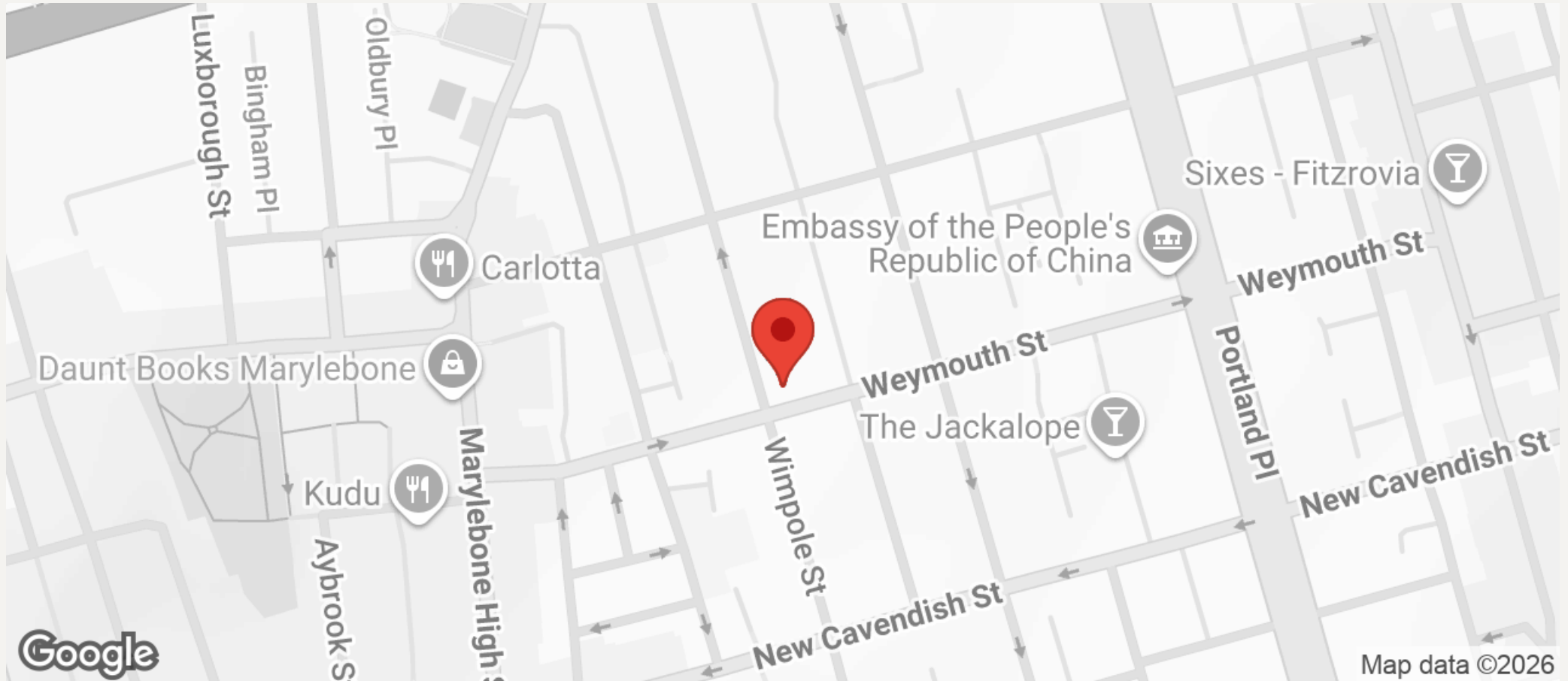


Lower Ground Floor



JEREMY JAMES

UPPER WIMPOLE STREET, MARYLEBONE VILLAGE, LONDON, W1



All negotiations are subject to contract. The Agents are not authorised to make or accept any contractual offer unless prior written notification to the contrary has been given on behalf of the client. In no other case whatsoever are the Agents (or any employee or sub-agent) authorised to make or give any representation or warranty on behalf of any party, and whilst information and particulars are given in all good faith intending purchasers and lessees must satisfy themselves independently as to the accuracy of all matters upon which they intend to rely. Measurements or distances referred to are approximately only. We have not carried out a survey or tested the services, appliances or specific fittings.

33 New Cavendish Street
London,
W1G 9TS
020 7486 4111
jeremyjames@jeremy-james.co.uk