



JEREMY JAMES

HARLEY STREET, HARLEY STREET MEDICAL DISTRICT, LONDON W1



RENT

£52,000 per annum

LOCAL AUTHORITY

City of Westminster

BUSINESS RATES

Approx £19,110 per annum

33 New Cavendish Street
London,

W1G 9TS

020 7486 4111

jeremyjames@jeremy-james.co.uk



JEREMY JAMES

HARLEY STREET, HARLEY STREET MEDICAL DISTRICT, LONDON W1



DESCRIPTION

Local transport links include underground stations; Oxford Circus, Bond Street, Baker Street and Regents Park. Mainline stations nearby include Marylebone and Paddington as well as King Cross and St Pancras, allowing easy access to Heathrow airport. Parking is available on the street or alternatively there is an NCP car park moments away.

AMENITIES

Passenger lift

1st Floor

2 Rooms

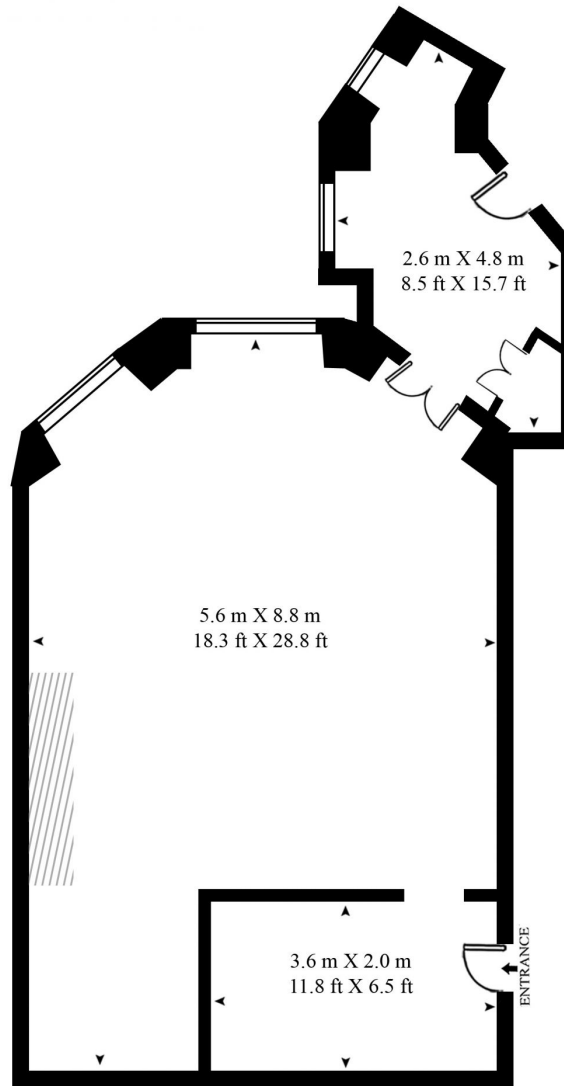
Reception Service

Communal Waiting Room

HARLEY STREET

APPROXIMATE GROSS INTERNAL FLOOR AREA 637 SQ.FT (59.2 SQ.M)

APPROXIMATE NET INTERNAL FLOOR AREA 612 SQ.FT (56.9 SQ.M)



FIRST FLOOR



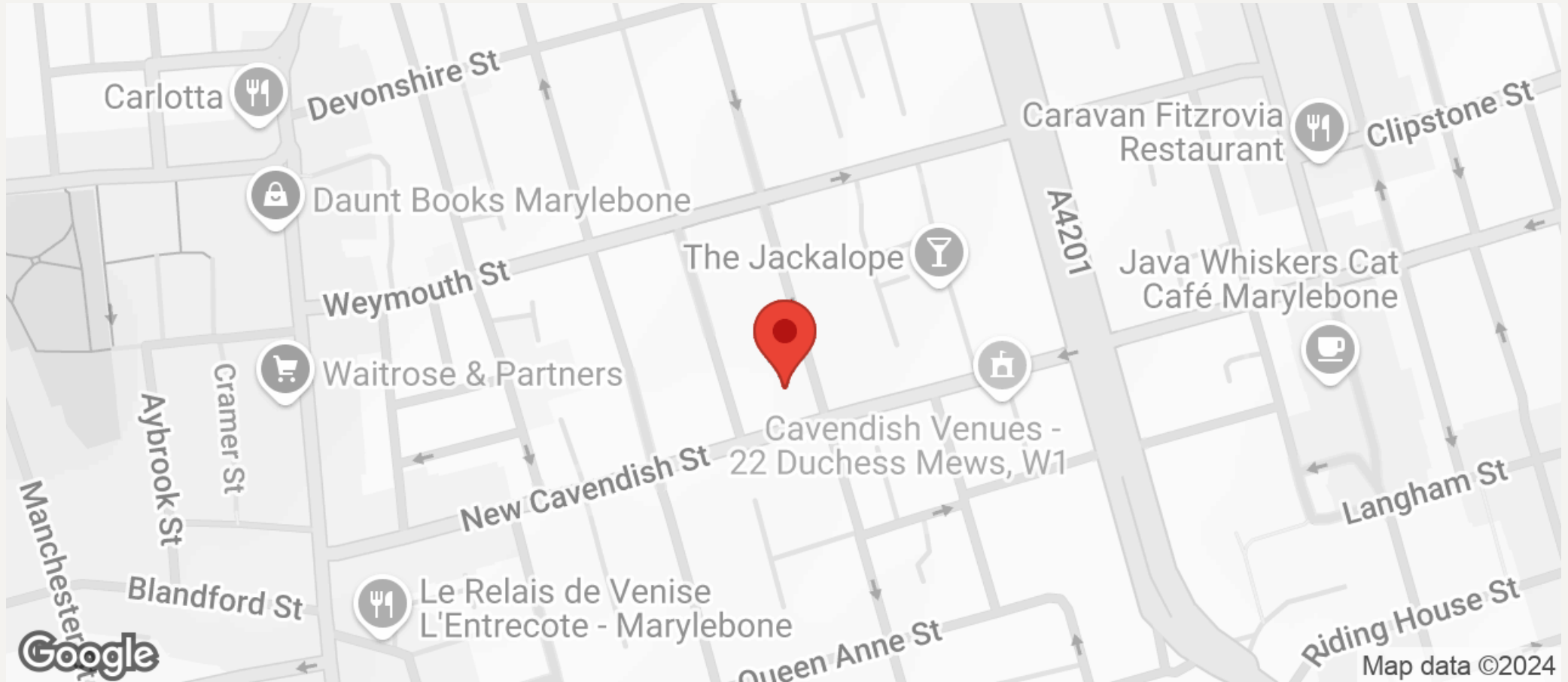
This floor plan has been defined by the RICS Code of Measurement. This floor plan and all others are for approximate representative purposes only and upon usage is agreed to as such by the client.

WWW: hdvirtualart.com | TEL: 0207 947 4014 | EMAIL: info@hdvirtualart.com



JEREMY JAMES

HARLEY STREET, HARLEY STREET MEDICAL DISTRICT, LONDON W1



All negotiations are subject to contract. The Agents are not authorised to make or accept any contractual offer unless prior written notification to the contrary has been given on behalf of the client. In no other case whatsoever are the Agents (or any employee or sub-agent) authorised to make or give any representation or warranty on behalf of any party, and whilst information and particulars are given in all good faith intending purchasers and lessees must satisfy themselves independently as to the accuracy of all matters upon which then intend to rely. Measurements or distances referred to are approximately only. We have not carried out a survey or tested the services, appliances or specific fittings.

33 New Cavendish Street
London,
W1G 9TS
020 7486 4111
jeremyjames@jeremy-james.co.uk