



JEREMY JAMES

DEVONSHIRE PLACE, MARYLEBONE VILLAGE, LONDON, W1



PRICE

£740 per week

FURNISHINGS

Unfurnished

DEPOSIT

£3,700

LOCAL AUTHORITY

City of Westminster

COUNCIL TAX BAND

H

33 New Cavendish Street
London,
W1G 9TS

020 7486 4111
jeremyjames@jeremy-james.co.uk



JEREMY JAMES

DEVONSHIRE PLACE, MARYLEBONE VILLAGE, LONDON, W1



DESCRIPTION

The accommodation consists of two double bedrooms, bathroom, separate cloakroom, reception room and kitchen.

The open spaces of Regents Park are close by as is Bond Street Underground Station.

AMENITIES

Lift

Wood Flooring

Separate Cloakroom

Energy Rating D

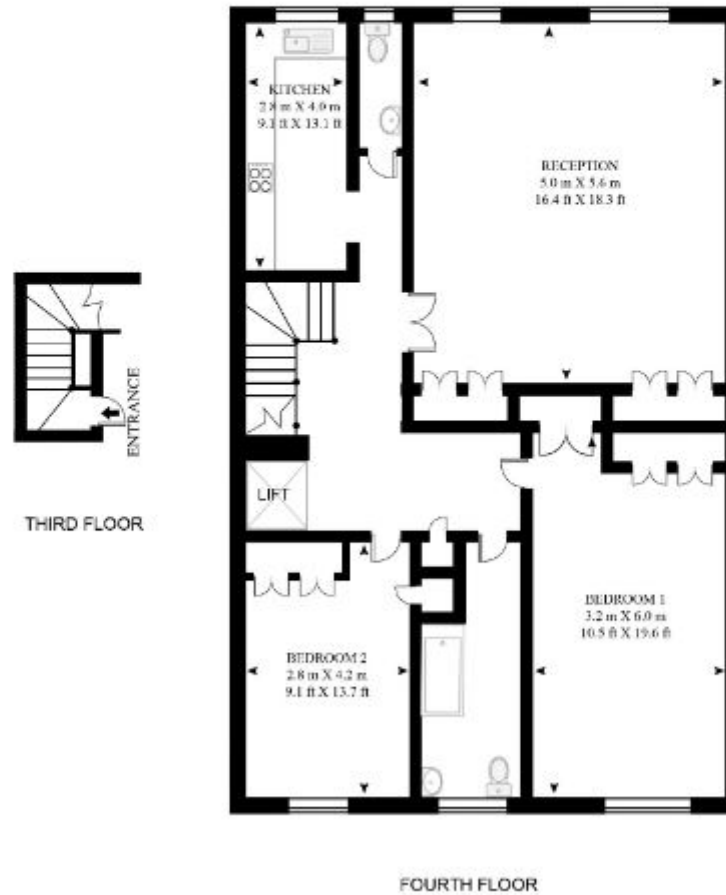


33 New Cavendish Street
London,
W1G 9TS

020 7486 4111
jeremyjames@jeremy-james.co.uk

DEVONSHIRE PLACE

APPROXIMATE GROSS INTERNAL FLOOR AREA 1038 SQ.FT (96.5 SQ.M)





JEREMY JAMES

DEVONSHIRE PLACE, MARYLEBONE VILLAGE, LONDON, W1



All negotiations are subject to contract. The Agents are not authorised to make or accept any contractual offer unless prior written notification to the contrary has been given on behalf of the client. In no other case whatsoever are the Agents (or any employee or sub-agent) authorised to make or give any representation or warranty on behalf of any party, and whilst information and particulars are given in all good faith intending purchasers and lessees must satisfy themselves independently as to the accuracy of all matters upon which then intend to rely. Measurements or distances referred to are approximately only. We have not carried out a survey or tested the services, appliances or specific fittings.

33 New Cavendish Street
London,
W1G 9TS

020 7486 4111

jeremyjames@jeremy-james.co.uk