



JEREMY JAMES

BROWNING MEWS, MARYLEBONE VILLAGE, LONDON W1



PRICE
£795,000

TENURE
Leasehold - 47 Years

GROUND RENT
£200 per annum

LOCAL AUTHORITY
City of Westminster

33 New Cavendish Street
London,
W1G 9TS
020 7486 4111
jeremyjames@jeremy-james.co.uk



JEREMY JAMES

BROWNING MEWS, MARYLEBONE VILLAGE, LONDON W1



DESCRIPTION

Accommodation comprises: Entrance on the ground floor leading to a lofty style first floor, Reception room, Kitchen, Bedroom and Shower room.

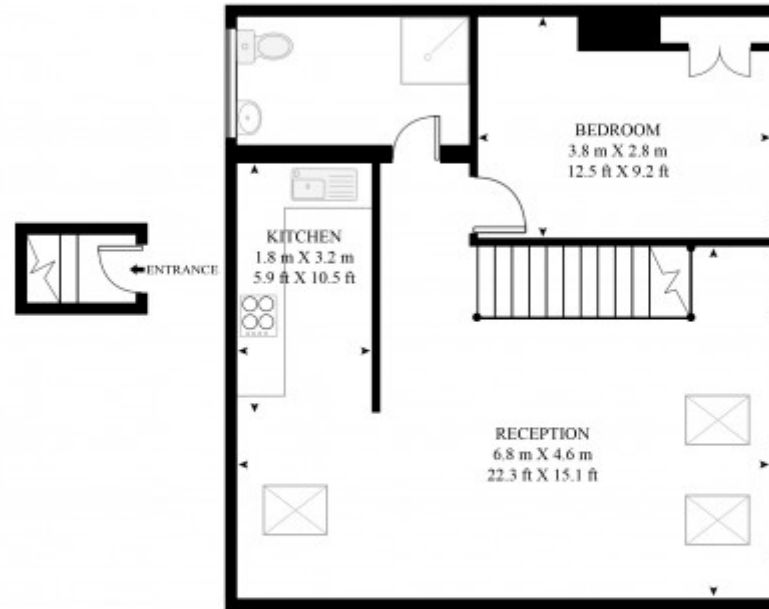
AMENITIES

Mews flat
Cul de sac
Own entrance



BROWNING MEWS

APPROXIMATE GROSS INTERNAL FLOOR AREA 556 SQ.FT (51.7 SQ.M)



GROUND FLOOR

FIRST FLOOR

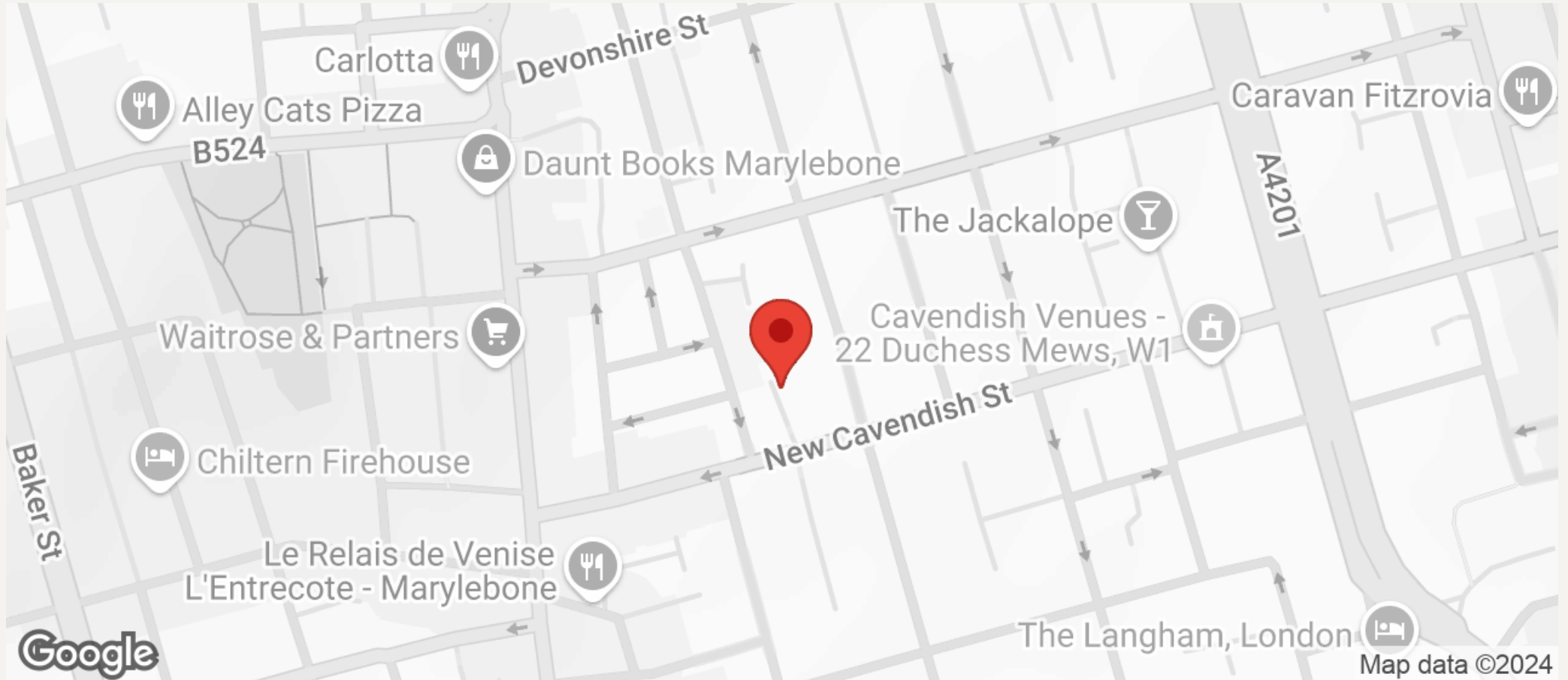
HDVA

This floor plan has been defined by the RICS Code of Measurement. This floor plan and all others are for approximate representative purposes only and upon usage is agreed to as such by the client.
WWW: hdvirtualart.com | TEL: 0207 947 4014 | EMAIL: info@hdvirtualart.com



JEREMY JAMES

BROWNING MEWS, MARYLEBONE VILLAGE, LONDON W1



All negotiations are subject to contract. The Agents are not authorised to make or accept any contractual offer unless prior written notification to the contrary has been given on behalf of the client. In no other case whatsoever are the Agents (or any employee or sub-agent) authorised to make or give any representation or warranty on behalf of any party, and whilst information and particulars are given in all good faith intending purchasers and lessees must satisfy themselves independently as to the accuracy of all matters upon which they intend to rely. Measurements or distances referred to are approximately only. We have not carried out a survey or tested the services, appliances or specific fittings.

33 New Cavendish Street
London,
W1G 9TS

020 7486 4111
jeremyjames@jeremy-james.co.uk