



JEREMY JAMES

HARLEY STREET, MARYLEBONE VILLAGE, LONDON, W1



PRICE

£700 per week

FURNISHINGS

Furnished

DEPOSIT

£3,500

LOCAL AUTHORITY

City of Westminster

COUNCIL TAX BAND

F

33 New Cavendish Street
London,
W1G 9TS

020 7486 4111

jeremyjames@jeremy-james.co.uk



JEREMY JAMES

HARLEY STREET, MARYLEBONE VILLAGE, LONDON, W1



DESCRIPTION

Accommodation comprises of two bedrooms, a shower room and a bathroom, large reception room that leads through to a separate fully fitted kitchen.

The flat features wood flooring throughout.

AMENITIES

Two double bedrooms

Wood Floors

Energy Rating B

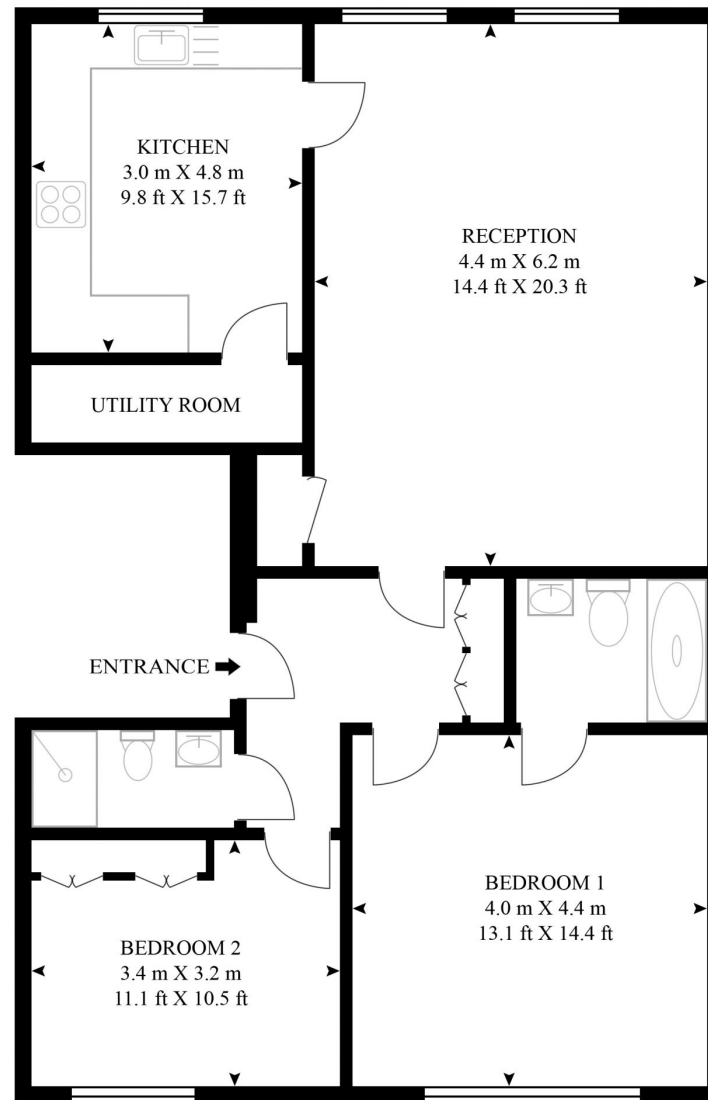
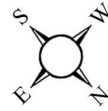


33 New Cavendish Street
London,
W1G 9TS

020 7486 4111
jeremyjames@jeremy-james.co.uk

HARLEY STREET

APPROXIMATE GROSS INTERNAL FLOOR AREA 914 SQ.FT (85 SQ.M)

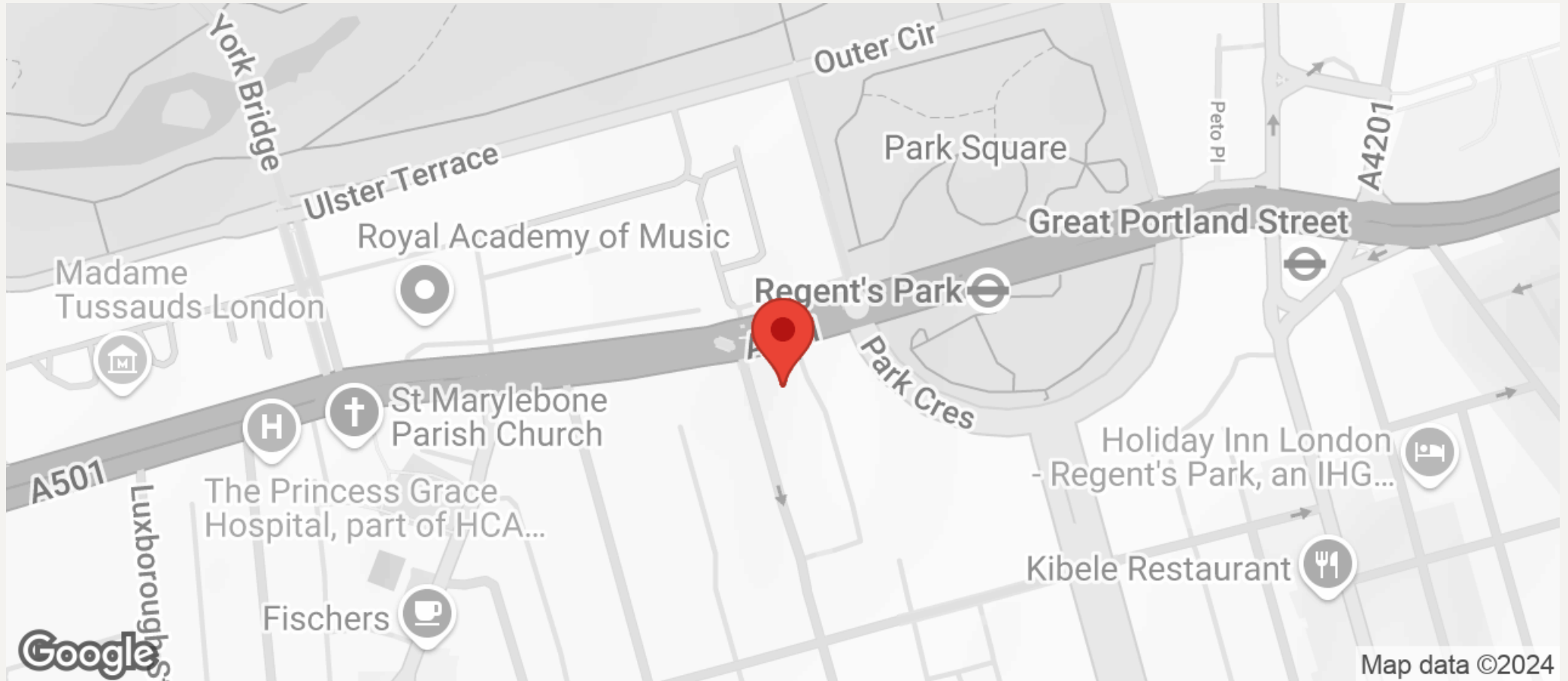


THIRD FLOOR



JEREMY JAMES

HARLEY STREET, MARYLEBONE VILLAGE, LONDON, W1



All negotiations are subject to contract. The Agents are not authorised to make or accept any contractual offer unless prior written notification to the contrary has been given on behalf of the client. In no other case whatsoever are the Agents (or any employee or sub-agent) authorised to make or give any representation or warranty on behalf of any party, and whilst information and particulars are given in all good faith intending purchasers and lessees must satisfy themselves independently as to the accuracy of all matters upon which they intend to rely. Measurements or distances referred to are approximately only. We have not carried out a survey or tested the services, appliances or specific fittings.

33 New Cavendish Street
London,
W1G 9TS

020 7486 4111

jeremyjames@jeremy-james.co.uk