



JEREMY JAMES

QUEEN ANNE MEWS, MARYLEBONE VILLAGE, LONDON, W1



PRICE

£850 per week

FURNISHINGS

Unfurnished

DEPOSIT

£4,250

LOCAL AUTHORITY

City of Westminster

COUNCIL TAX BAND

G

33 New Cavendish Street
London,
W1G 9TS

020 7486 4111
jeremyjames@jeremy-james.co.uk



JEREMY JAMES

QUEEN ANNE MEWS, MARYLEBONE VILLAGE, LONDON, W1



DESCRIPTION

The accommodation comprises of a study which could be used as a third bedroom and a cloakroom with access to both the garage and the outdoor patio on the ground floor, on the second floor a modern kitchen opening onto the reception room featuring wooden floors. The third floor comprises of the two bedrooms and bathroom.

AMENITIES

Freshly Decorated

Outside Space

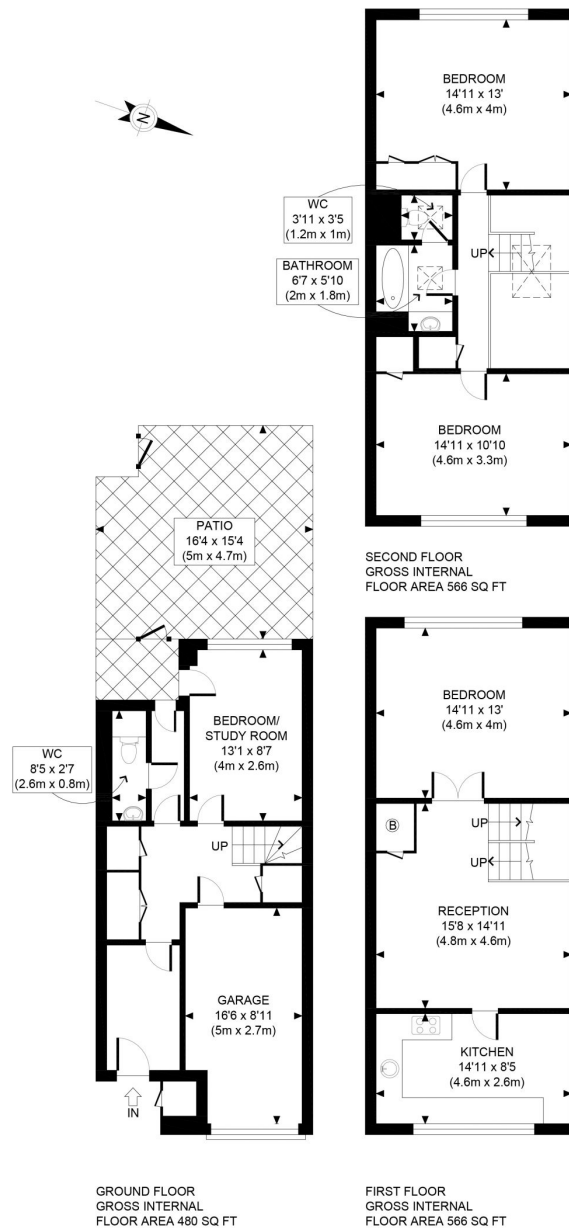
Garage

Energy Rating E



33 New Cavendish Street
London,
W1G 9TS

020 7486 4111
jeremyjames@jeremy-james.co.uk



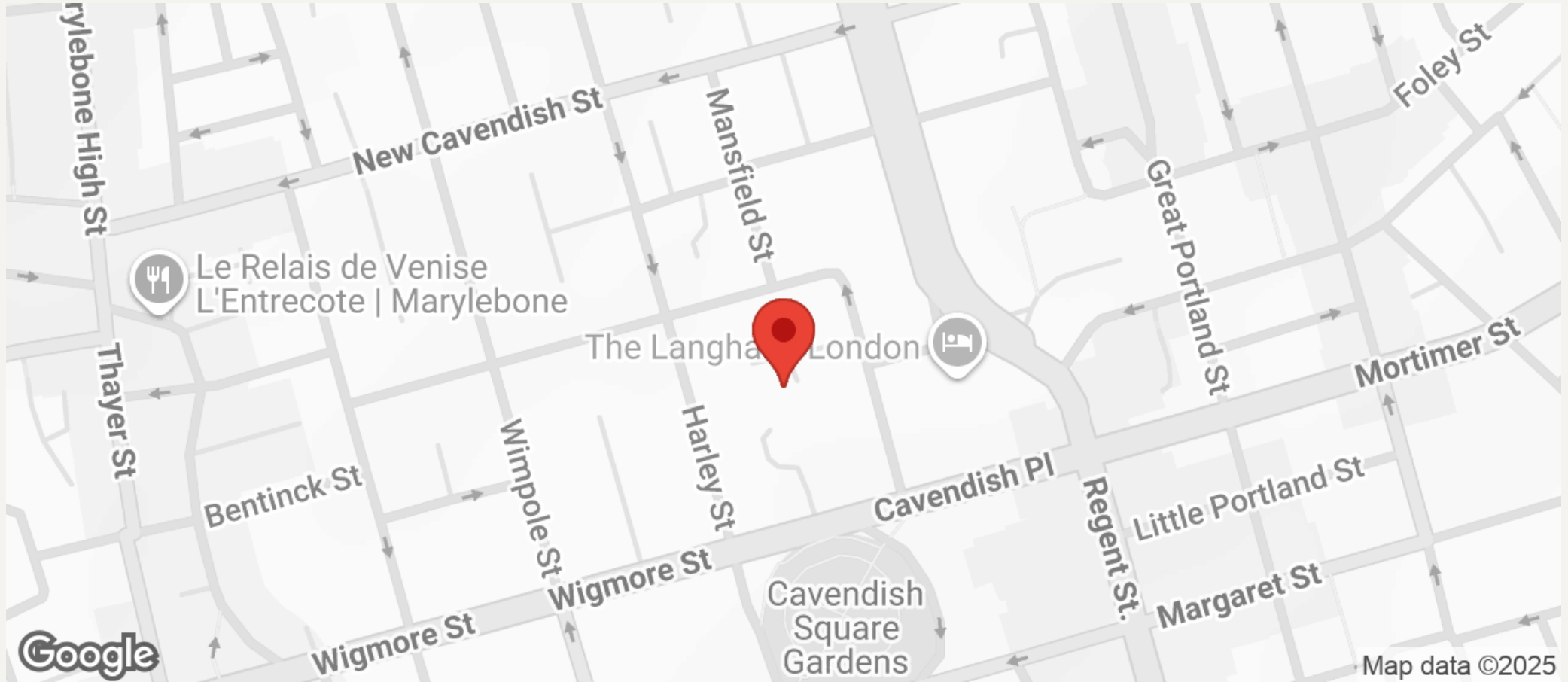
APPROX. GROSS INTERNAL FLOOR AREA WITH GARAGE 1612 SQ FT / 150 SQM
 APPROX. GROSS INTERNAL FLOOR AREA WITHOUT GARAGE 1462 SQ FT / 136 SQM
 Ref: Copyright **photoplan**

Disclaimer: Floor plan measurements are approximate and are for illustrative purposes only. While we do not doubt the floor plan accuracy and completeness, you or your advisors should conduct a careful, independent investigation of the property in respect of monetary valuation



JEREMY JAMES

QUEEN ANNE MEWS, MARYLEBONE VILLAGE, LONDON, W1



All negotiations are subject to contract. The Agents are not authorised to make or accept any contractual offer unless prior written notification to the contrary has been given on behalf of the client. In no other case whatsoever are the Agents (or any employee or sub-agent) authorised to make or give any representation or warranty on behalf of any party, and whilst information and particulars are given in all good faith intending purchasers and lessees must satisfy themselves independently as to the accuracy of all matters upon which then intend to rely. Measurements or distances referred to are approximately only. We have not carried out a survey or tested the services, appliances or specific fittings.

33 New Cavendish Street
London,
W1G 9TS

020 7486 4111

jeremyjames@jeremy-james.co.uk