



JEREMY JAMES

13 NEW CAVENDISH STREET, LONDON W1G



PRICE

£1,050,000

TENURE

Leasehold - 168 Years

SERVICE CHARGE

Approx £3,100 per annum

LOCAL AUTHORITY

City of Westminster

COUNCIL TAX BAND

E

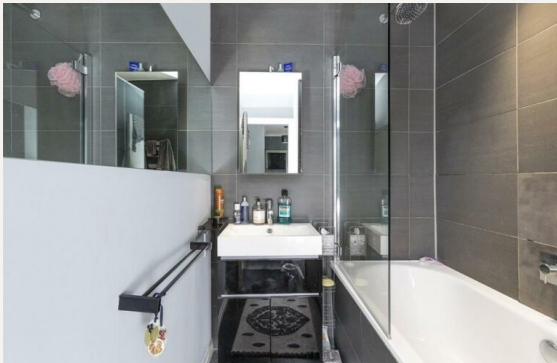
33 New Cavendish Street
London,
W1G 9TS

020 7486 4111
jeremyjames@jeremy-james.co.uk



JEREMY JAMES

13 NEW CAVENDISH STREET, LONDON W1G



DESCRIPTION

This one bed apartment is approximately 720 sq ft (66.9 sq m) located on the third floor served by a passenger lift. The property comprises of entrance hall, reception room, bedroom, double bathroom and cloakroom. The building benefits from a day porter.

Kingsley Lodge is located moments from Marylebone High Street moments away from Bond Street and Oxford Circus underground stations together with access to the A40/M40 are within close proximity. The open spaces of Regents Park are also nearby.

AMENITIES

1 Bedroom

1 Bathrooms

Third Floor With Lift

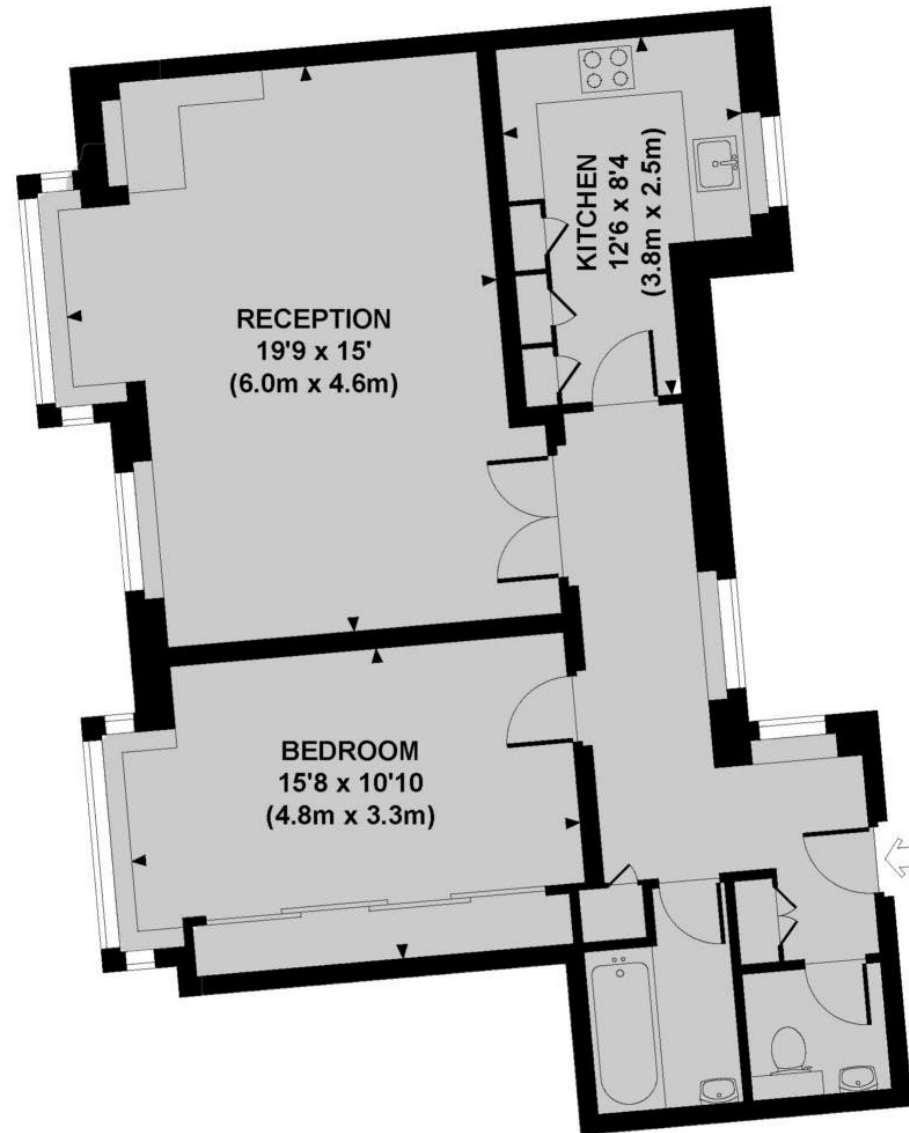
Porter

EPC: C

Moments from Marylebone High Street

33 New Cavendish Street
London,
W1G 9TS

020 7486 4111
jeremyjames@jeremy-james.co.uk



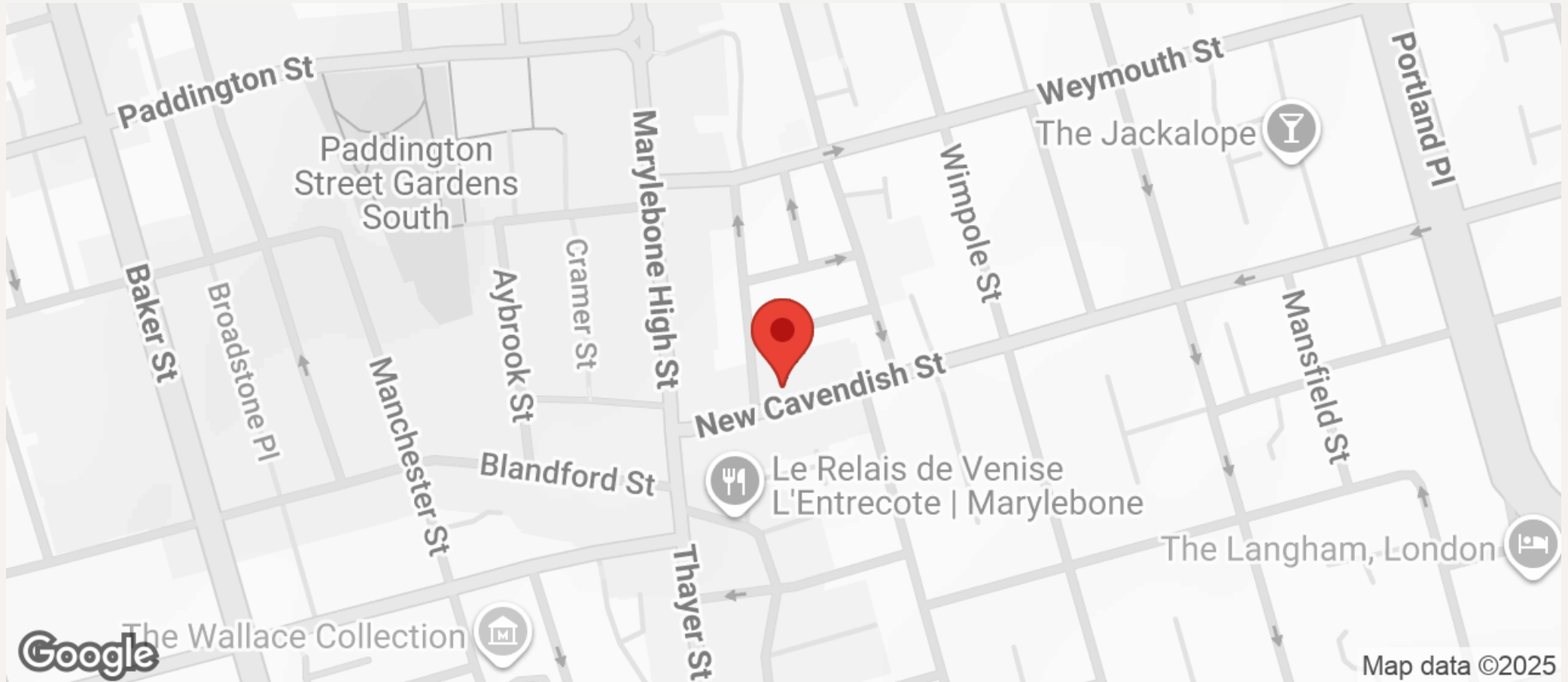
THIRD FLOOR

Approx. gross internal area
720 Sq Ft / 66.9 Sq M.



JEREMY JAMES

13 NEW CAVENDISH STREET, LONDON W1G



All negotiations are subject to contract. The Agents are not authorised to make or accept any contractual offer unless prior written notification to the contrary has been given on behalf of the client. In no other case whatsoever are the Agents (or any employee or sub-agent) authorised to make or give any representation or warranty on behalf of any party, and whilst information and particulars are given in all good faith intending purchasers and lessees must satisfy themselves independently as to the accuracy of all matters upon which then intend to rely. Measurements or distances referred to are approximately only. We have not carried out a survey or tested the services, appliances or specific fittings.

33 New Cavendish Street
London,
W1G 9TS

020 7486 4111
jeremyjames@jeremy-james.co.uk