



JEREMY JAMES

HARLEY STREET, HARLEY STREET MEDICAL DISTRICT, LONDON W1G



RENT

£68,997 per annum

LOCAL AUTHORITY

City of Westminster

BUSINESS RATES

Approx £16,292.50 per annum

33 New Cavendish Street
London,
W1G 9TS

020 7486 4111
jeremyjames@jeremy-james.co.uk



JEREMY JAMES

HARLEY STREET, HARLEY STREET MEDICAL DISTRICT, LONDON W1G



DESCRIPTION

This medical suite located on the first floor on the east side of Harley Street, close to the junction with Cavendish Square.

Local transport links include underground stations; Oxford Circus, Bond Street, Baker Street and Regents Park. Mainline stations nearby include Marylebone and Paddington as well as King Cross and St Pancras, allowing easy access to Heathrow airport. Parking is available on the street or alternatively there is an NCP car park moments away.

AMENITIES

First Floor

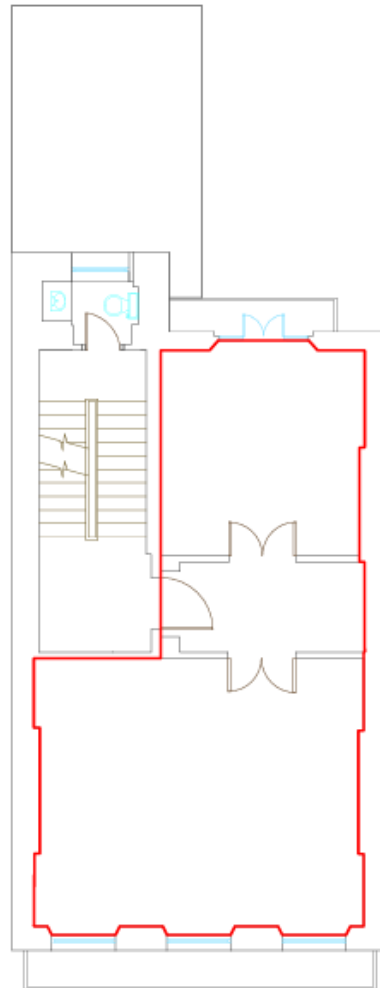
In the heart of the medical district

2 Rooms

EPC D

33 New Cavendish Street
London,
W1G 9TS

020 7486 4111
jeremyjames@jeremy-james.co.uk



First Floor



Plan Layout



0 2 4 m

Shakib & Co
Ground Floor Drawing Yard
Back Lane London W6B 2 10R
Tel: +44 (0)20 2612 4555
www.shakib.co.uk

14 Harley Street
London, W1G 9QY

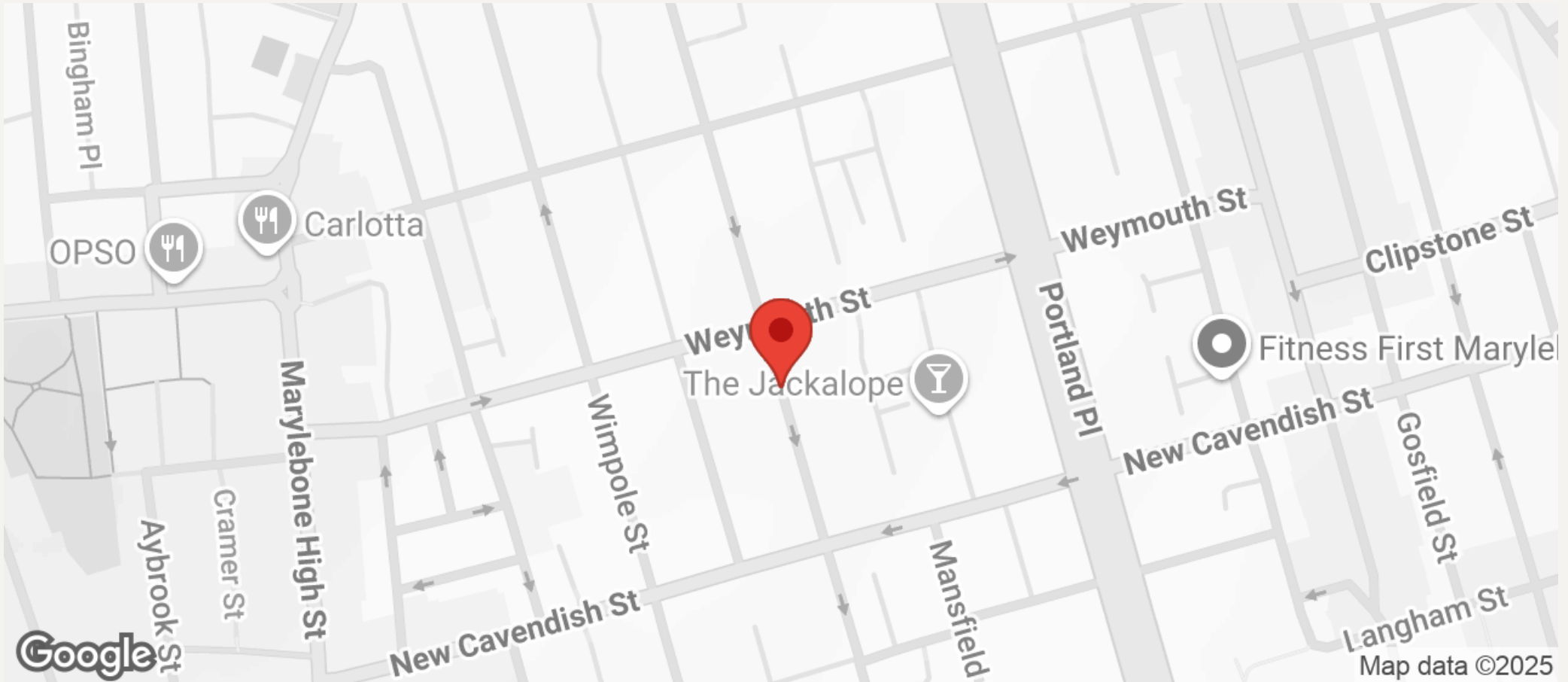
First Floor Lease plan

COMMENTS			
DATE	1/10/2014	BY	18/08/2012
REVISION		REVISION	1/1



JEREMY JAMES

HARLEY STREET, HARLEY STREET MEDICAL DISTRICT, LONDON W1G



All negotiations are subject to contract. The Agents are not authorised to make or accept any contractual offer unless prior written notification to the contrary has been given on behalf of the client. In no other case whatsoever are the Agents (or any employee or sub-agent) authorised to make or give any representation or warranty on behalf of any party, and whilst information and particulars are given in all good faith intending purchasers and lessees must satisfy themselves independently as to the accuracy of all matters upon which then intend to rely. Measurements or distances referred to are approximately only. We have not carried out a survey or tested the services, appliances or specific fittings.

33 New Cavendish Street
London,
W1G 9TS

020 7486 4111

jeremyjames@jeremy-james.co.uk