



**JEREMY JAMES**

**DEVONSHIRE MEWS WEST, MARYLEBONE VILLAGE, LONDON W1G**



**PRICE**

£825 per week

**FURNISHINGS**

Unfurnished

**DEPOSIT**

£4,125

**LOCAL AUTHORITY**

City of Westminster

**COUNCIL TAX BAND**

G

33 New Cavendish Street  
London,  
W1G 9TS

020 7486 4111  
[jeremyjames@jeremy-james.co.uk](mailto:jeremyjames@jeremy-james.co.uk)



# JEREMY JAMES

## DEVONSHIRE MEWS WEST, MARYLEBONE VILLAGE, LONDON W1G



### DESCRIPTION

Set in a quiet mews, the apartment features wood flooring throughout and offers well-proportioned accommodation, including two double bedrooms a modern bathroom, a separate eat-in kitchen, and a reception.

Perfectly positioned for convenient transport links, the property is within easy walking distance of both Bond Street and Baker Street Underground Stations, with the open green spaces of Regent's Park also close by.

### AMENITIES

2 Bedrooms

1 Bathroom

Wooden Floor

Situated in a Quiet Mews

Moments from Marylebone High Street

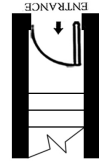
EPC: D

33 New Cavendish Street  
London,  
W1G 9TS

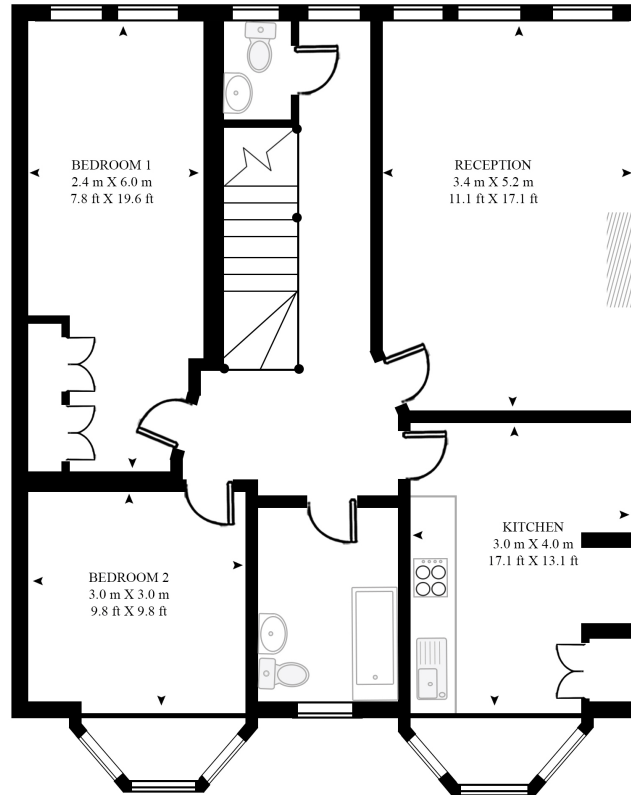
020 7486 4111  
[jeremyjames@jeremy-james.co.uk](mailto:jeremyjames@jeremy-james.co.uk)

## DEVONSHIRE MEWS WEST

APPROXIMATE GROSS INTERNAL FLOOR AREA 852 SQ.FT (79.2 SQ.M)



GROUND FLOOR



FIRST FLOOR



This floor plan has been defined by the RICS Code of Measurement. This floor plan and all others are for approximate representative purposes only and upon usage is agreed to as such by the client.

WWW: [hdvirtualart.com](http://hdvirtualart.com) | TEL: 0207 947 4014 | EMAIL: [info@hdvirtualart.com](mailto:info@hdvirtualart.com)



JEREMY JAMES

DEVONSHIRE MEWS WEST, MARYLEBONE VILLAGE, LONDON W1G



All negotiations are subject to contract. The Agents are not authorised to make or accept any contractual offer unless prior written notification to the contrary has been given on behalf of the client. In no other case whatsoever are the Agents (or any employee or sub-agent) authorised to make or give any representation or warranty on behalf of any party, and whilst information and particulars are given in all good faith intending purchasers and lessees must satisfy themselves independently as to the accuracy of all matters upon which then intend to rely. Measurements or distances referred to are approximately only. We have not carried out a survey or tested the services, appliances or specific fittings.

33 New Cavendish Street  
London,  
W1G 9TS

020 7486 4111

[jeremyjames@jeremy-james.co.uk](mailto:jeremyjames@jeremy-james.co.uk)