



JEREMY JAMES

NOTTINGHAM TERRACE, MARYLEBONE, LONDON NW1



PRICE

£1,100 per week

FURNISHINGS

Unfurnished

DEPOSIT

£6,600

LOCAL AUTHORITY

City of Westminster

COUNCIL TAX BAND

G

33 New Cavendish Street
London,
W1G 9TS

020 7486 4111
jeremyjames@jeremy-james.co.uk



JEREMY JAMES

NOTTINGHAM TERRACE, MARYLEBONE, LONDON NW1



DESCRIPTION

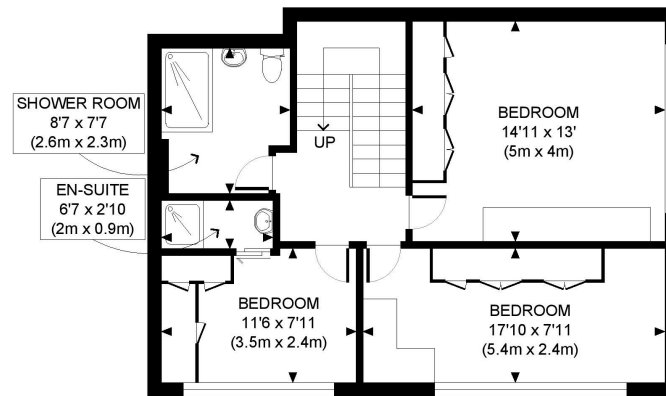
This duplex apartment, situated on the ground and first floors, offers a reception room, separate kitchen, and guest W/C on the ground level. The first floor features three bedrooms, one with an en-suite shower room, as well as a separate bathroom. All bedrooms include built-in wardrobes.

Nottingham Terrace is enviably located at the south western corner of Regent's Park and moments from the boutique shops and amenities of Marylebone High Street. The developments benefits from 24 hours security.

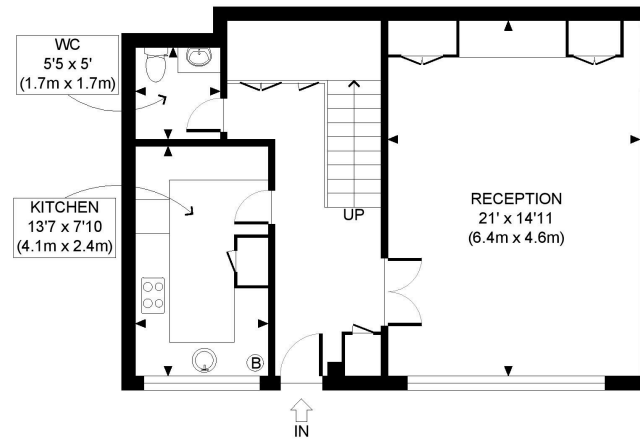


AMENITIES

Three Bedrooms
Bedrooms with Fitted Wardrobes
Separate Kitchen
Moments from Regents Park
EPC: C



FIRST FLOOR
GROSS INTERNAL
FLOOR AREA 622 SQ FT



GROUND FLOOR
GROSS INTERNAL
FLOOR AREA 618 SQ FT



APPROX. GROSS INTERNAL FLOOR AREA: 1240 SQ FT/ 115 SQM

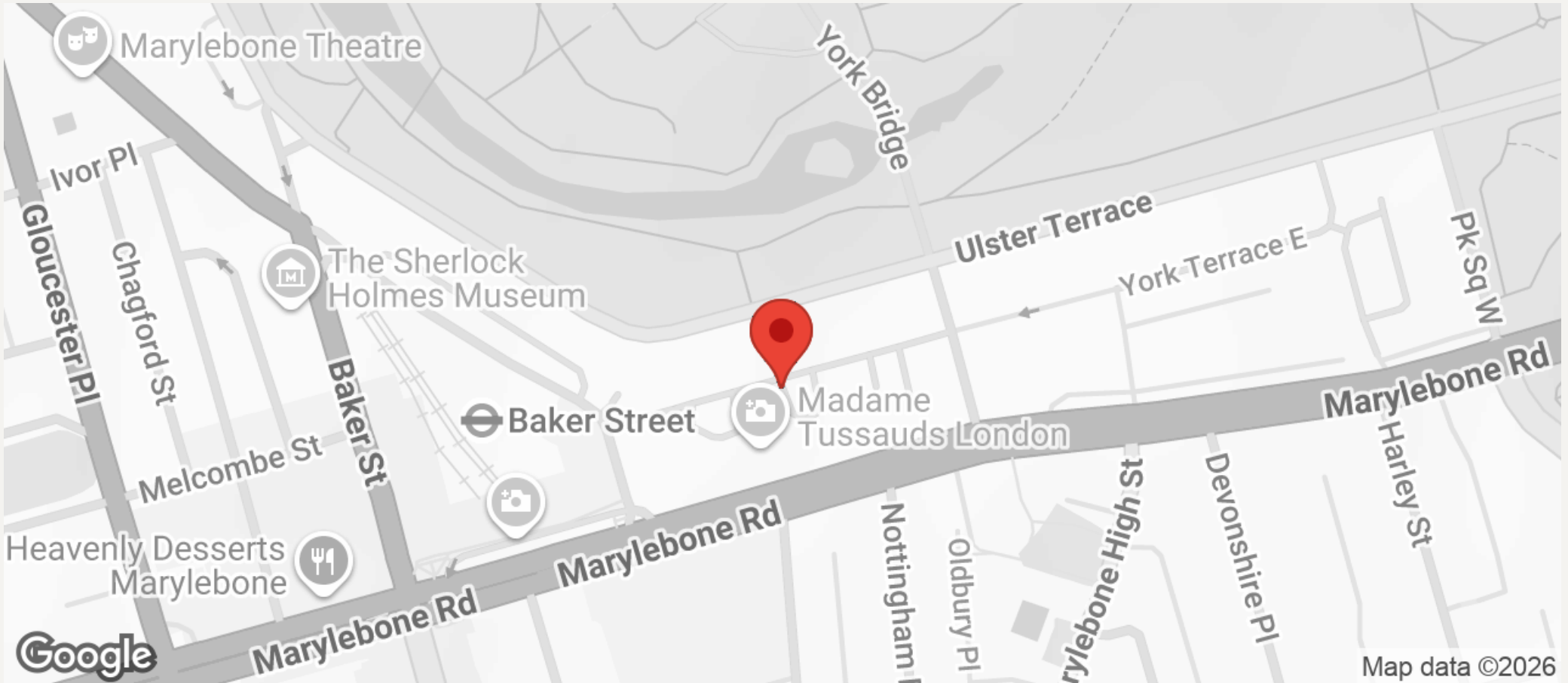
PROPERTY PHOTO PLANS.COUK
ONE STOP SHOP FOR PROPERTY MARKETING

This plan is for illustrative purposes only and should be used as such by any prospective client. Whilst every attempt has been made to ensure the accuracy of the Floor Plan contained here, measurements of the doors, windows, rooms and any other items are approximate and no responsibility is taken for any errors, omissions, or misstatement. The services, systems and appliances shown have not been tested and no guarantee as to the operability or efficiency can be given.



JEREMY JAMES

NOTTINGHAM TERRACE, MARYLEBONE, LONDON NW1



All negotiations are subject to contract. The Agents are not authorised to make or accept any contractual offer unless prior written notification to the contrary has been given on behalf of the client. In no other case whatsoever are the Agents (or any employee or sub-agent) authorised to make or give any representation or warranty on behalf of any party, and whilst information and particulars are given in all good faith intending purchasers and lessees must satisfy themselves independently as to the accuracy of all matters upon which they intend to rely. Measurements or distances referred to are approximately only. We have not carried out a survey or tested the services, appliances or specific fittings.

33 New Cavendish Street
London,
W1G 9TS

020 7486 4111

jeremyjames@jeremy-james.co.uk