



JEREMY JAMES

MANSFIELD STREET, MARYLEBONE VILLAGE, LONDON W1



PRICE

£825 per week

FURNISHINGS

Furnished

DEPOSIT

£4,125

LOCAL AUTHORITY

City of Westminster

COUNCIL TAX BAND

G

33 New Cavendish Street
London,
W1G 9TS

020 7486 4111
jeremyjames@jeremy-james.co.uk



JEREMY JAMES

MANSFIELD STREET, MARYLEBONE VILLAGE, LONDON W1



DESCRIPTION

The accommodation comprises of two double bedrooms, a modern shower room, a fabulous open plan modern kitchen and spacious living room. The flat is furnished to a good standard with wooden floors throughout.

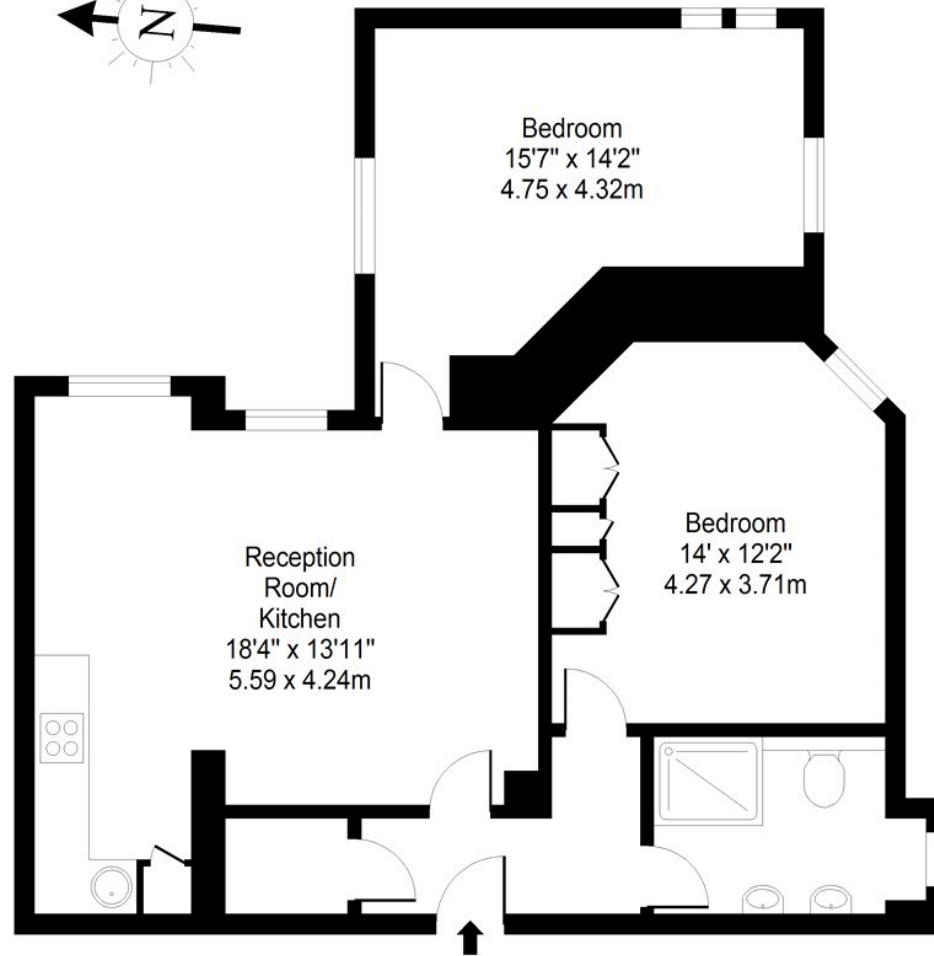
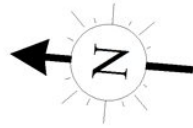
AMENITIES

Prestigious Block
24 Hour Porter
Wood Floor
2 Bedrooms
1 Bathroom
Energy Performance Rating D

33 New Cavendish Street
London,
W1G 9TS

020 7486 4111
jeremyjames@jeremy-james.co.uk

MANSFIELD STREET



Ground Floor

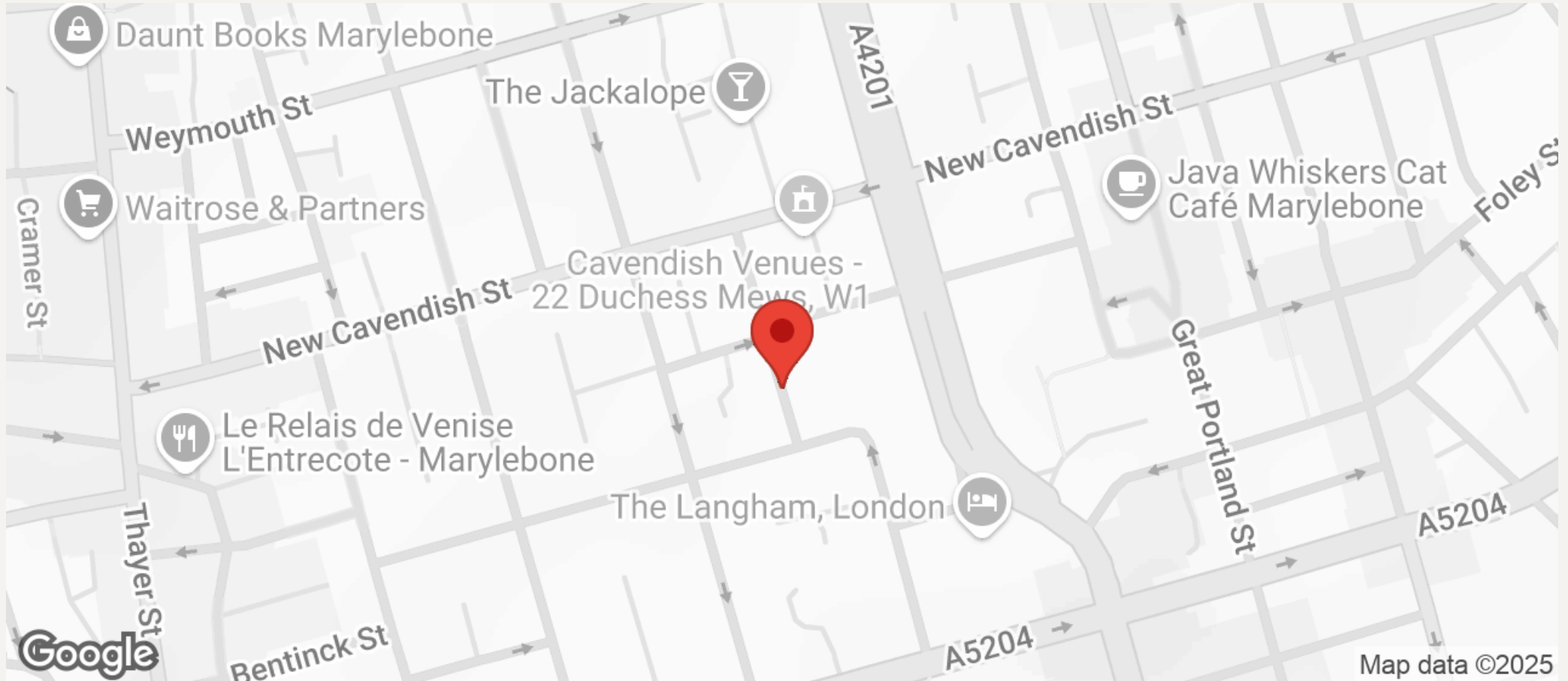
Approx. Gross Internal Area 804 Sq Ft - 74.69 Sq M

For Illustrative Purposes Only - Not To Scale



JEREMY JAMES

MANSFIELD STREET, MARYLEBONE VILLAGE, LONDON W1



All negotiations are subject to contract. The Agents are not authorised to make or accept any contractual offer unless prior written notification to the contrary has been given on behalf of the client. In no other case whatsoever are the Agents (or any employee or sub-agent) authorised to make or give any representation or warranty on behalf of any party, and whilst information and particulars are given in all good faith intending purchasers and lessees must satisfy themselves independently as to the accuracy of all matters upon which then intend to rely. Measurements or distances referred to are approximately only. We have not carried out a survey or tested the services, appliances or specific fittings.

33 New Cavendish Street
London,
W1G 9TS

020 7486 4111

jeremyjames@jeremy-james.co.uk