



# JEREMY JAMES

MARYLEBONE STREET, MARYLEBONE VILLAGE, LONDON W1G



## PRICE

£1,500,000

## TENURE

Share of Freehold - 983 Years

## SERVICE CHARGE

£5,200 per annum

## LOCAL AUTHORITY

City of Westminster

## COUNCIL TAX BAND

G

33 New Cavendish Street  
London,  
W1G 9TS

020 7486 4111  
jeremyjames@jeremy-james.co.uk



# JEREMY JAMES

## MARYLEBONE STREET, MARYLEBONE VILLAGE, LONDON W1G



### DESCRIPTION

Positioned on the second floor, the property comprises an entrance hall, a bright reception room, three bedrooms with built-in wardrobes, two bathrooms (one en suite), and a separate kitchen.

The building benefits from a passenger lift, well-maintained communal gardens, and a day porter.

Located on the west side of Marylebone Street, close to Weymouth Street, the apartment is within easy reach of Bond Street and Baker Street Underground stations, as well as the open green spaces of Regent's Park.

### AMENITIES

3 Bedrooms

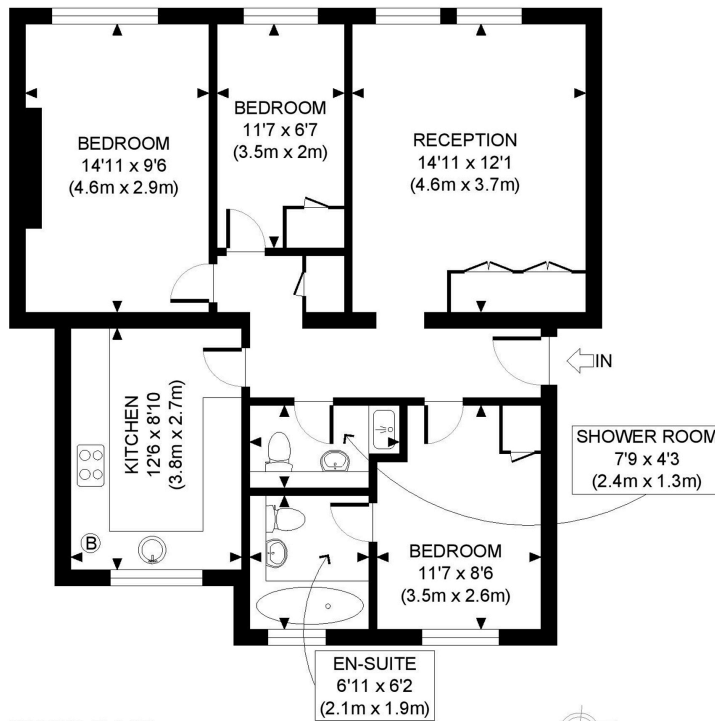
2 Bathrooms

Share of Freehold

In the heart of Marylebone Village

Moments from Marylebone High Street

EPC: C



SECOND FLOOR  
GROSS INTERNAL  
FLOOR AREA 804 SQ FT

APPROX. GROSS INTERNAL FLOOR AREA: 804 SQ FT/ 75 SQM

**PROPERTY PHOTO PLANS**.co.uk  
ONE STOP SHOP FOR PROPERTY MARKETING

Whilst every attempt has been made to ensure the accuracy of the floor plan contained here, measurements of the doors, windows, rooms and any other items are approximate and no responsibility is taken for any errors, omissions, or miss-statement. This plan is for illustrative purposes only and should be used as such by any prospective client. The services, systems and appliances shown have not been tested and no guarantee as to the operability or efficiency can be given.



# JEREMY JAMES

MARYLEBONE STREET, MARYLEBONE VILLAGE, LONDON W1G



All negotiations are subject to contract. The Agents are not authorised to make or accept any contractual offer unless prior written notification to the contrary has been given on behalf of the client. In no other case whatsoever are the Agents (or any employee or sub-agent) authorised to make or give any representation or warranty on behalf of any party, and whilst information and particulars are given in all good faith intending purchasers and lessees must satisfy themselves independently as to the accuracy of all matters upon which they intend to rely. Measurements or distances referred to are approximately only. We have not carried out a survey or tested the services, appliances or specific fittings.

33 New Cavendish Street  
London,  
W1G 9TS

020 7486 4111

[jeremyjames@jeremy-james.co.uk](mailto:jeremyjames@jeremy-james.co.uk)