



JEREMY JAMES

QUEEN ANNE STREET, MARYLEBONE VILLAGE, LONDON W1G



PRICE

£875 per week

FURNISHINGS

Unfurnished

DEPOSIT

£4,375

LOCAL AUTHORITY

City of Westminster

COUNCIL TAX BAND

F



JEREMY JAMES

QUEEN ANNE STREET, MARYLEBONE VILLAGE, LONDON W1G



DESCRIPTION

This apartment, approximately 1,091 sq ft (101.4 sq m), situated on the third floor of an elegant period building in the heart of Marylebone Village. The well-appointed accommodation includes a reception room, a bedroom with an en-suite bathroom, a separate kitchen, and a cloakroom.

Ideally located, the property is just a short walk from Marylebone High Street, Regent Street, and Bond Street, as well as the open green spaces of Regent's Park.

AMENITIES

One Bedroom

Third Floor

Lift

Moments from Marylebone High Street

1,091 sq ft (101.4 sq m)

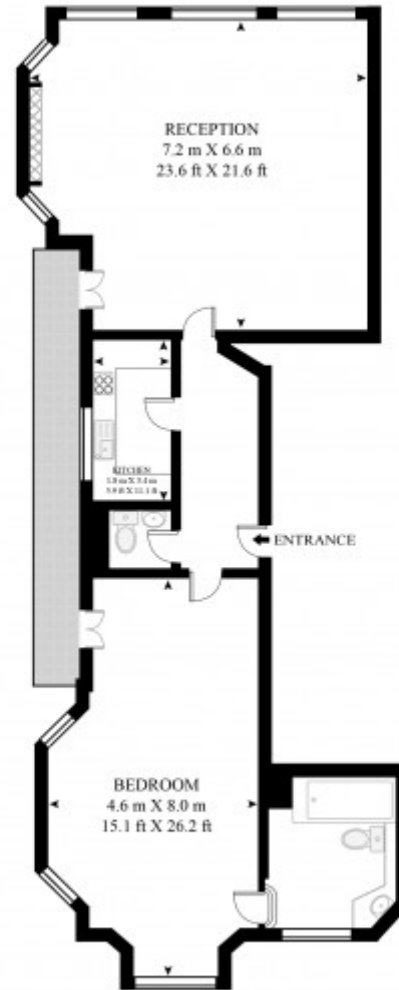
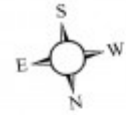
EPC: C

33 New Cavendish Street
London,
W1G 9TS

020 7486 4111
jeremyjames@jeremy-james.co.uk

QUEEN ANNE STREET

APPROXIMATE GROSS INTERNAL FLOOR AREA 1091 SQ.FT (101.4 SQ.M)



THIRD FLOOR

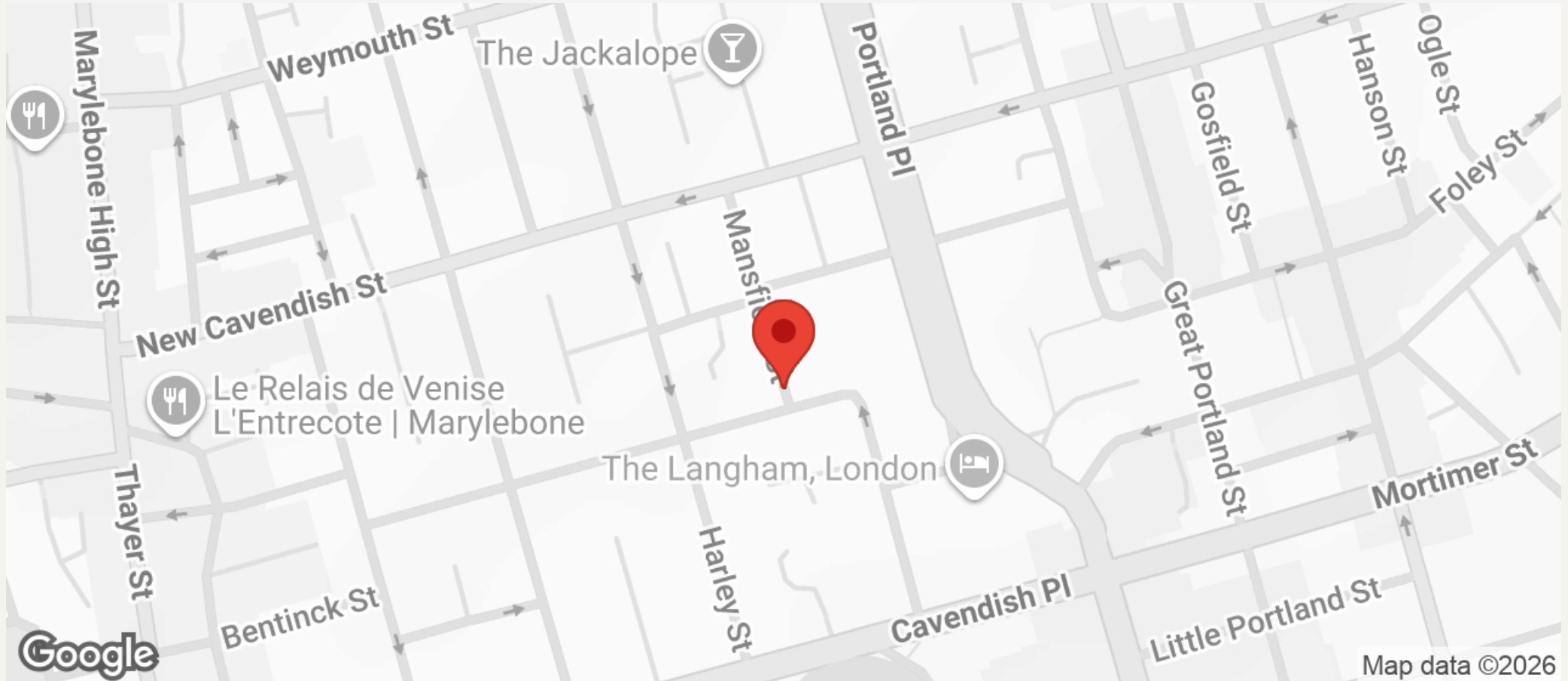
HDVA

This floor plan has been defined by the RICS Code of Measurement. This floor plan and all others are for approximate representative purposes only and upon usage is agreed to as such by the client.
WWW: hdvirtualart.com | TEL: 0207 947 4014 | EMAIL: info@hdvirtualart.com



JEREMY JAMES

QUEEN ANNE STREET, MARYLEBONE VILLAGE, LONDON W1G



All negotiations are subject to contract. The Agents are not authorised to make or accept any contractual offer unless prior written notification to the contrary has been given on behalf of the client. In no other case whatsoever are the Agents (or any employee or sub-agent) authorised to make or give any representation or warranty on behalf of any party, and whilst information and particulars are given in all good faith intending purchasers and lessees must satisfy themselves independently as to the accuracy of all matters upon which then intend to rely. Measurements or distances referred to are approximately only. We have not carried out a survey or tested the services, appliances or specific fittings.

33 New Cavendish Street
London,
W1G 9TS

020 7486 4111
jeremyjames@jeremy-james.co.uk