



JEREMY JAMES

HARLEY STREET, HARLEY STREET MEDICAL DISTRICT, LONDON W1G



RENT

£64,906 per annum

LOCAL AUTHORITY

City of Westminster

BUSINESS RATES

Approx £14,945 per annum

33 New Cavendish Street
London,
W1G 9TS

020 7486 4111
jeremyjames@jeremy-james.co.uk



JEREMY JAMES

HARLEY STREET, HARLEY STREET MEDICAL DISTRICT, LONDON W1G



DESCRIPTION

This medical suite located on the second floor on the east side of Harley Street, close to the junction with Cavendish Square.

Local transport links include underground stations; Oxford Circus, Bond Street, Baker Street and Regents Park. Mainline stations nearby include Marylebone and Paddington as well as King Cross and St Pancras, allowing easy access to Heathrow airport. Parking is available on the street or alternatively there is an NCP car park moments away.

AMENITIES

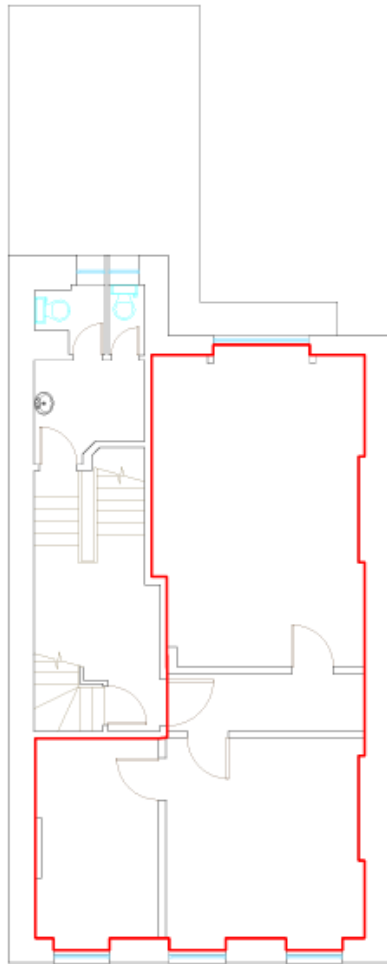
Second Floor

Recently Refurbished

In the heart of the medical district

3 Rooms

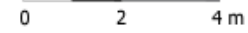
EPC: C



Second Floor



Plan Layout



Shakib & Co
 Ground Floor Smoking Yard
 14 Harley Street London W1G 9JH
 Tel: +44 (0)20 7611 4999
www.shakib.co.uk

14 Harley Street
 London, W1G9QY

Second Floor Lease plan

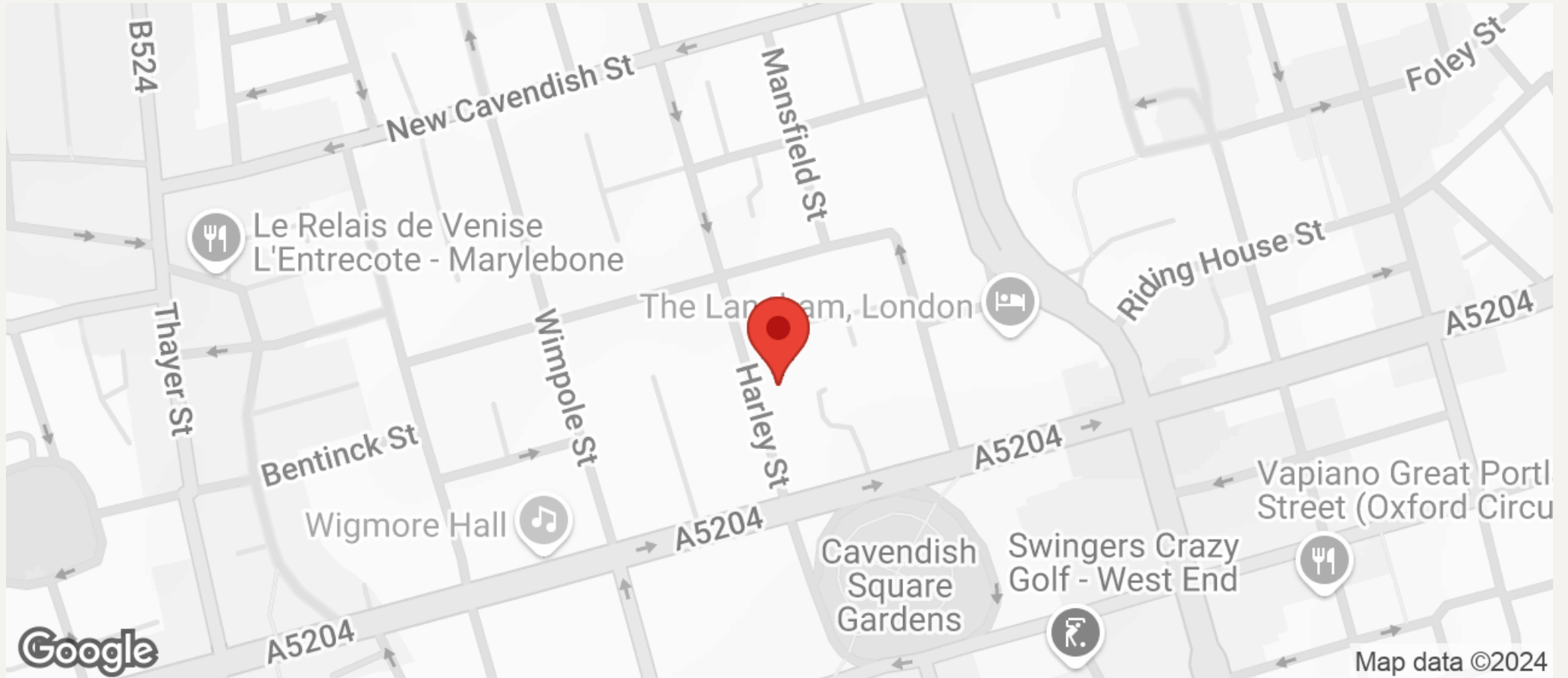
COMMENTS

DATE	1/10/2014	BY	1806020
SCALE	1:100 (A4)	REVISED	VI



JEREMY JAMES

HARLEY STREET, HARLEY STREET MEDICAL DISTRICT, LONDON W1G



All negotiations are subject to contract. The Agents are not authorised to make or accept any contractual offer unless prior written notification to the contrary has been given on behalf of the client. In no other case whatsoever are the Agents (or any employee or sub-agent) authorised to make or give any representation or warranty on behalf of any party, and whilst information and particulars are given in all good faith intending purchasers and lessees must satisfy themselves independently as to the accuracy of all matters upon which then intend to rely. Measurements or distances referred to are approximately only. We have not carried out a survey or tested the services, appliances or specific fittings.

33 New Cavendish Street
London,
W1G 9TS

020 7486 4111

jeremyjames@jeremy-james.co.uk