



JEREMY JAMES

WIMPOLE STREET, MARYLEBONE VILLAGE, LONDON W1G



PRICE

£1,846 per week

FURNISHINGS

Furnished

DEPOSIT

£11,076

LOCAL AUTHORITY

City of Westminster

COUNCIL TAX BAND

G

33 New Cavendish Street
London,
W1G 9TS

020 7486 4111
jeremyjames@jeremy-james.co.uk



JEREMY JAMES

WIMPOLE STREET, MARYLEBONE VILLAGE, LONDON W1G



DESCRIPTION

Wimpole Street located in the heart of Marylebone Village, moments from its independent boutiques, cafés, and restaurants, with the green expanses of Regent's Park also close by. Excellent transport links are easily accessible, including Regent's Park, Baker Street, and Great Portland Street underground stations, as well as nearby national rail connections from Marylebone, Euston, and King's Cross. The A40 provides straightforward routes west towards Heathrow.

AMENITIES

In the heart of the Marylebone Village

Furnished

Three Bedrooms

2 Bathrooms

Newly Refurbished

EPC: D



33 New Cavendish Street
London,
W1G 9TS

020 7486 4111
jeremyjames@jeremy-james.co.uk

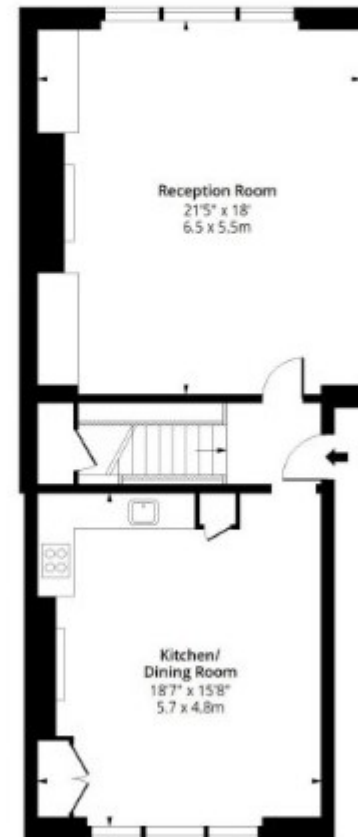
Wimpole Street, W1G

Approx. Gross Internal Area 1612 Sq Ft - 149.75 Sq M



Lower Ground Floor

Floor Area 862 Sq Ft - 80.08 Sq M



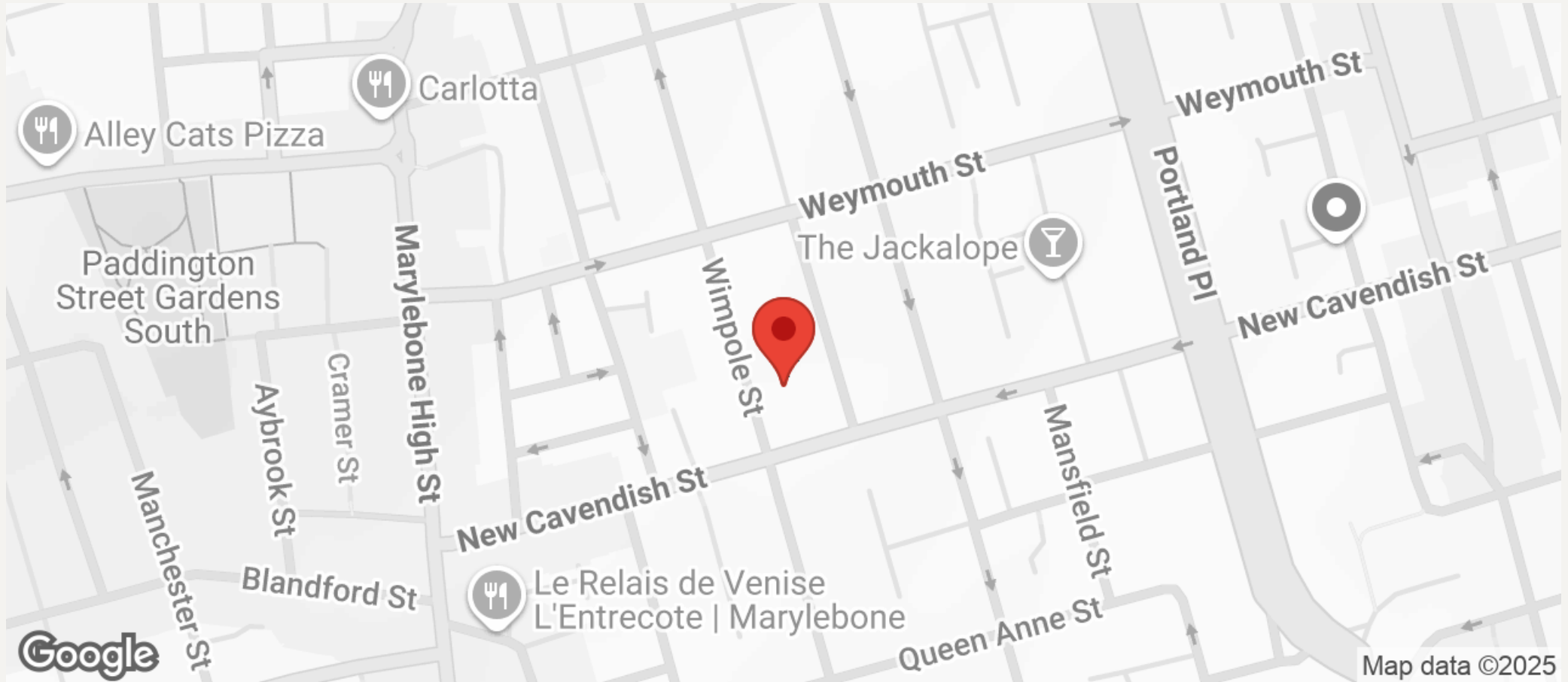
Ground Floor

Floor Area 750 Sq Ft - 69.68 Sq M



JEREMY JAMES

WIMPOLE STREET, MARYLEBONE VILLAGE, LONDON W1G



All negotiations are subject to contract. The Agents are not authorised to make or accept any contractual offer unless prior written notification to the contrary has been given on behalf of the client. In no other case whatsoever are the Agents (or any employee or sub-agent) authorised to make or give any representation or warranty on behalf of any party, and whilst information and particulars are given in all good faith intending purchasers and lessees must satisfy themselves independently as to the accuracy of all matters upon which then intend to rely. Measurements or distances referred to are approximately only. We have not carried out a survey or tested the services, appliances or specific fittings.

33 New Cavendish Street
London,
W1G 9TS

020 7486 4111
jeremyjames@jeremy-james.co.uk