



JEREMY JAMES

WIMPOLE STREET, MARYLEBONE VILLAGE, LONDON W1.



PRICE

£925 per week

FURNISHINGS

Unfurnished

DEPOSIT

£4,625

LOCAL AUTHORITY

City of Westminster

COUNCIL TAX BAND

G

33 New Cavendish Street
London,
W1G 9TS

020 7486 4111
jeremyjames@jeremy-james.co.uk



JEREMY JAMES

WIMPOLE STREET, MARYLEBONE VILLAGE, LONDON W1.



DESCRIPTION

The apartments comprises two double bedrooms (with generous storage), family bathroom, en-suite shower room, reception room and a fully fitted separate kitchen. The apartment benefits from wood flooring in the lounge and hallway.

The building is located moments from Marylebone High Street with Bond Street underground station a short walk away as are the open spaces of Regents Park.

AMENITIES

2 Bedrooms

2 Bathrooms

Unfurnished

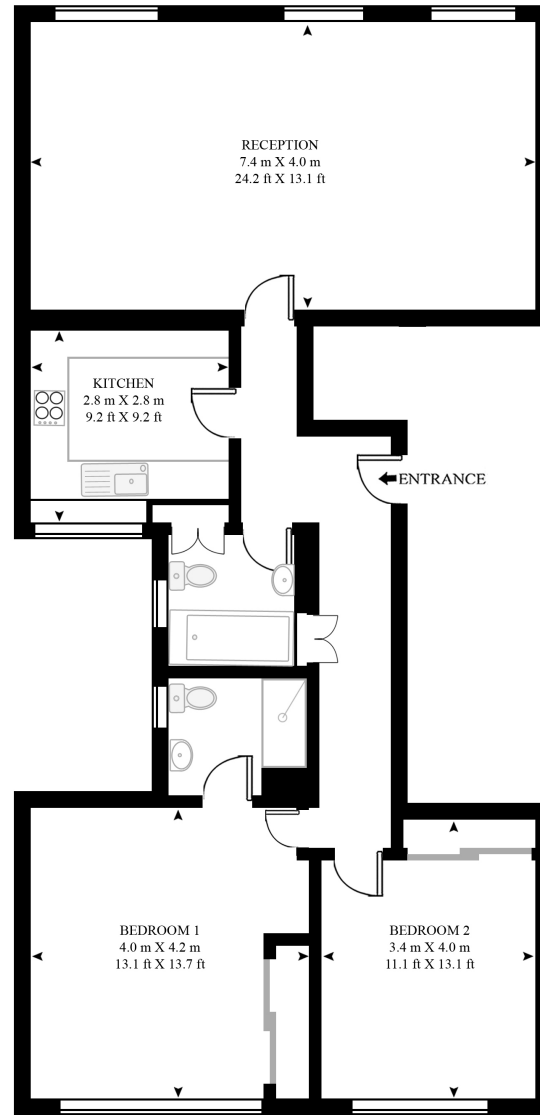
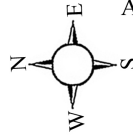
Wood flooring in reception room and hallway

In the heart of the Marylebone Village

EPC: C

WIMPOLE STREET

APPROXIMATE GROSS INTERNAL FLOOR AREA 922 SQ.FT (85.7 SQ.M)

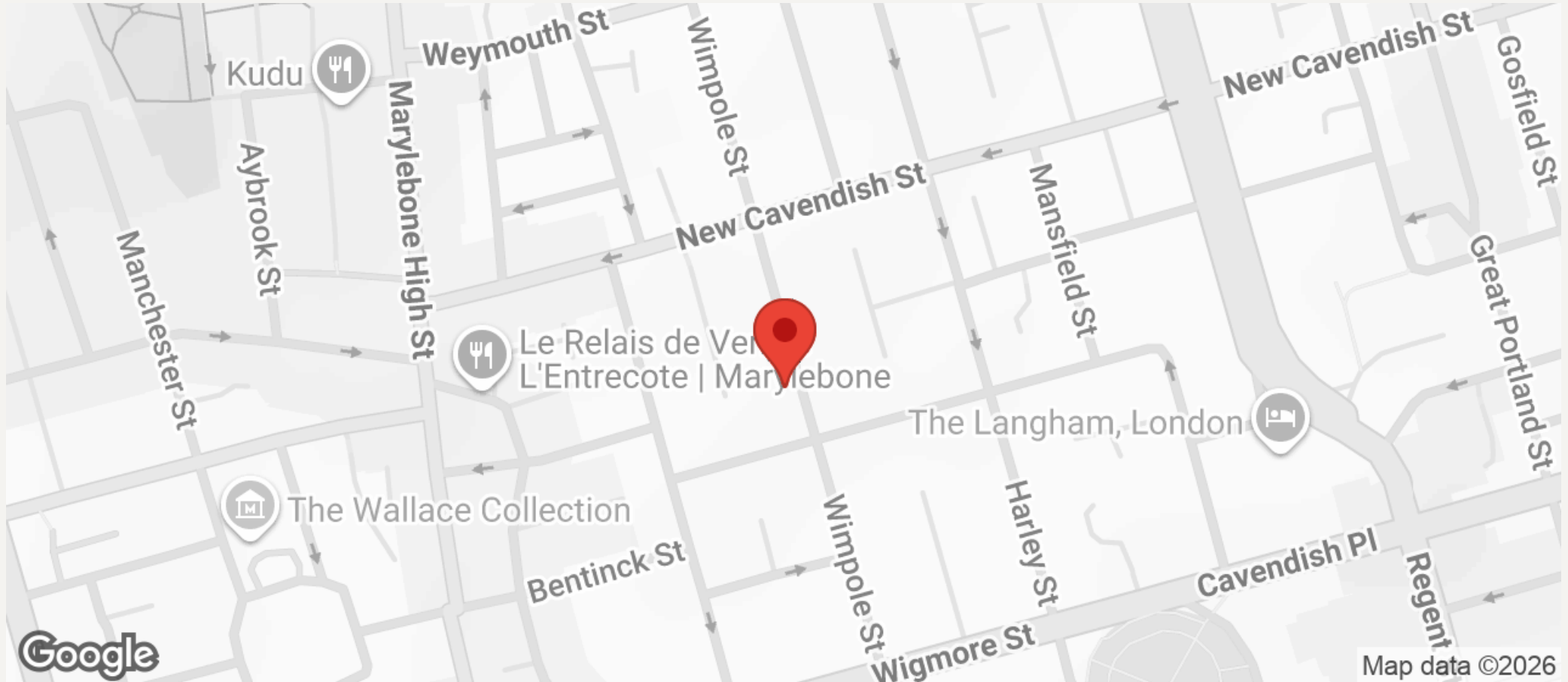


THIRD FLOOR



JEREMY JAMES

WIMPOLE STREET, MARYLEBONE VILLAGE, LONDON W1.



All negotiations are subject to contract. The Agents are not authorised to make or accept any contractual offer unless prior written notification to the contrary has been given on behalf of the client. In no other case whatsoever are the Agents (or any employee or sub-agent) authorised to make or give any representation or warranty on behalf of any party, and whilst information and particulars are given in all good faith intending purchasers and lessees must satisfy themselves independently as to the accuracy of all matters upon which then intend to rely. Measurements or distances referred to are approximately only. We have not carried out a survey or tested the services, appliances or specific fittings.

33 New Cavendish Street
London,
W1G 9TS

020 7486 4111

jeremyjames@jeremy-james.co.uk