



# JEREMY JAMES

BLANDFORD STREET, MARYLEBONE VILLAGE, LONDON, W1



## PRICE

£825,000

## TENURE

Leasehold - 69 Years

## SERVICE CHARGE

Approx £3,460 per annum

## GROUND RENT

£400 per annum

## LOCAL AUTHORITY

City of Westminster

## COUNCIL TAX BAND

F

33 New Cavendish Street  
London,  
W1G 9TS

020 7486 4111  
[jeremyjames@jeremy-james.co.uk](mailto:jeremyjames@jeremy-james.co.uk)



# JEREMY JAMES

## BLANDFORD STREET, MARYLEBONE VILLAGE, LONDON, W1



### DESCRIPTION

This purpose-built building is located on the south side of Blandford Street close to the junction with Manchester Street. Access to Marylebone High Street's array of shops, restaurants, cafes and other amenities. Manchester Square is close by together with the open spaces of Regents Park. Bond Street and Baker Street underground stations are within close proximity.

### AMENITIES

Gated Development

One Bedroom

Moments from Marylebone High Street

Passenger Lift

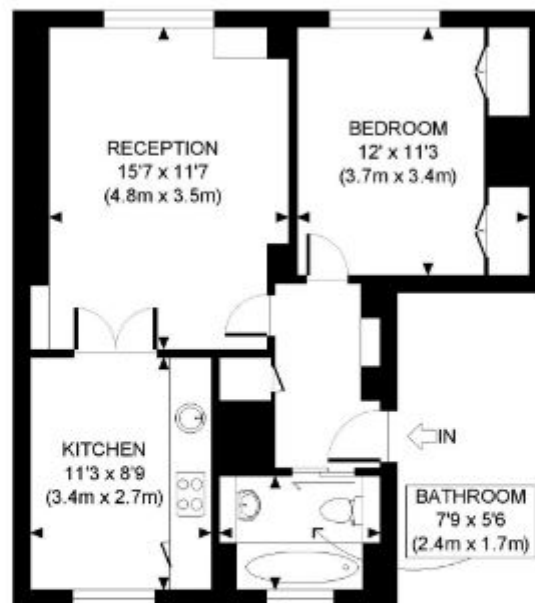
First Floor

EPC D



33 New Cavendish Street  
London,  
W1G 9TS

020 7486 4111  
[jeremyjames@jeremy-james.co.uk](mailto:jeremyjames@jeremy-james.co.uk)



FIRST FLOOR  
GROSS INTERNAL  
FLOOR AREA 548 SQ FT

APPROX. GROSS INTERNAL FLOOR AREA: 548 SQ FT/ 51 SQM

**PROPERTY PHOTO PLANS**.co.uk  
ONE STOP SHOP FOR PROPERTY MARKETING



JEREMY JAMES

BLANDFORD STREET, MARYLEBONE VILLAGE, LONDON, W1



All negotiations are subject to contract. The Agents are not authorised to make or accept any contractual offer unless prior written notification to the contrary has been given on behalf of the client. In no other case whatsoever are the Agents (or any employee or sub-agent) authorised to make or give any representation or warranty on behalf of any party, and whilst information and particulars are given in all good faith intending purchasers and lessees must satisfy themselves independently as to the accuracy of all matters upon which then intend to rely. Measurements or distances referred to are approximately only. We have not carried out a survey or tested the services, appliances or specific fittings.

33 New Cavendish Street  
London,  
W1G 9TS

020 7486 4111  
jeremyjames@jeremy-james.co.uk