



# JEREMY JAMES

HALLAM STREET, MARYLEBONE VILLAGE. LONDON W1W



## PRICE

£425 per week

## FURNISHINGS

Furnished

## DEPOSIT

£2,125

## LOCAL AUTHORITY

City of Westminster

## COUNCIL TAX BAND

C

33 New Cavendish Street  
London,  
W1G 9TS

020 7486 4111  
jeremyjames@jeremy-james.co.uk



# JEREMY JAMES

HALLAM STREET, MARYLEBONE VILLAGE. LONDON W1W



## DESCRIPTION

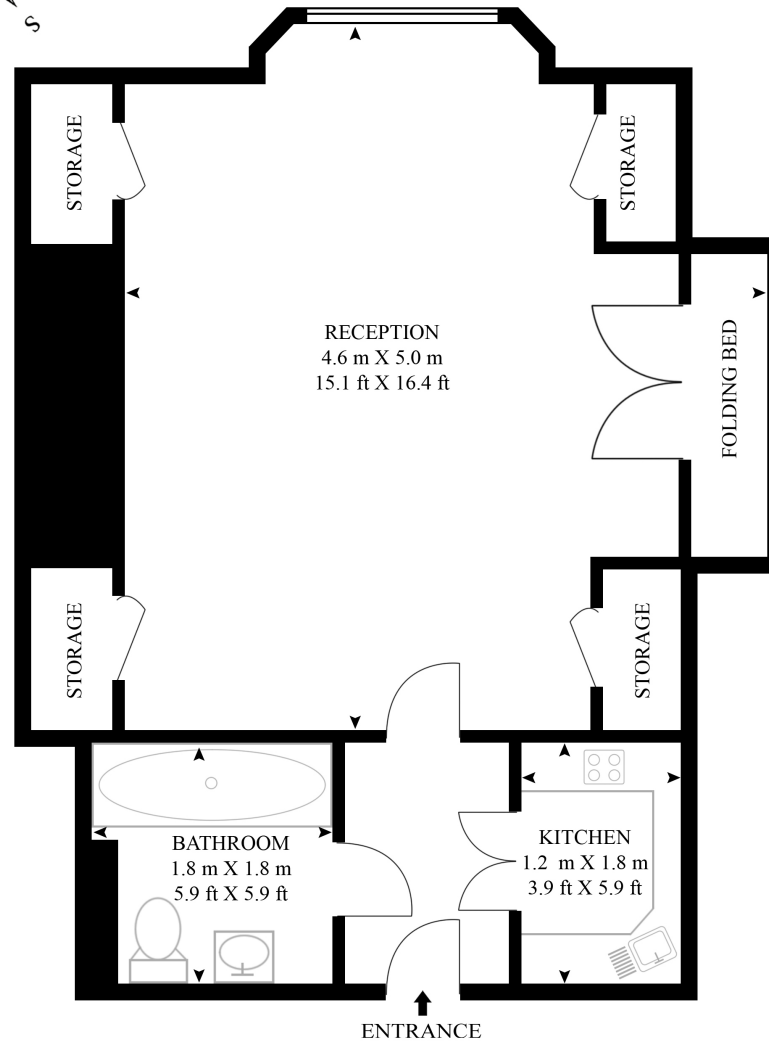
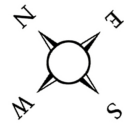
This studio apartment comes furnished and accommodation comprises of studio room with generous storage, separate kitchen and bathroom. The property has the added benefit of a porter and a passenger lift. Hot water and heating included in the rent.

## AMENITIES

- Studio flat
- Portered Block
- Heating and hot water included
- Passenger Lift
- EPC Rating C
- Easy to manage 'Wall Bed'

**HALLAM STREET**

APPROXIMATE GROSS INTERNAL FLOOR AREA 322 SQ.FT (30 SQ.M)

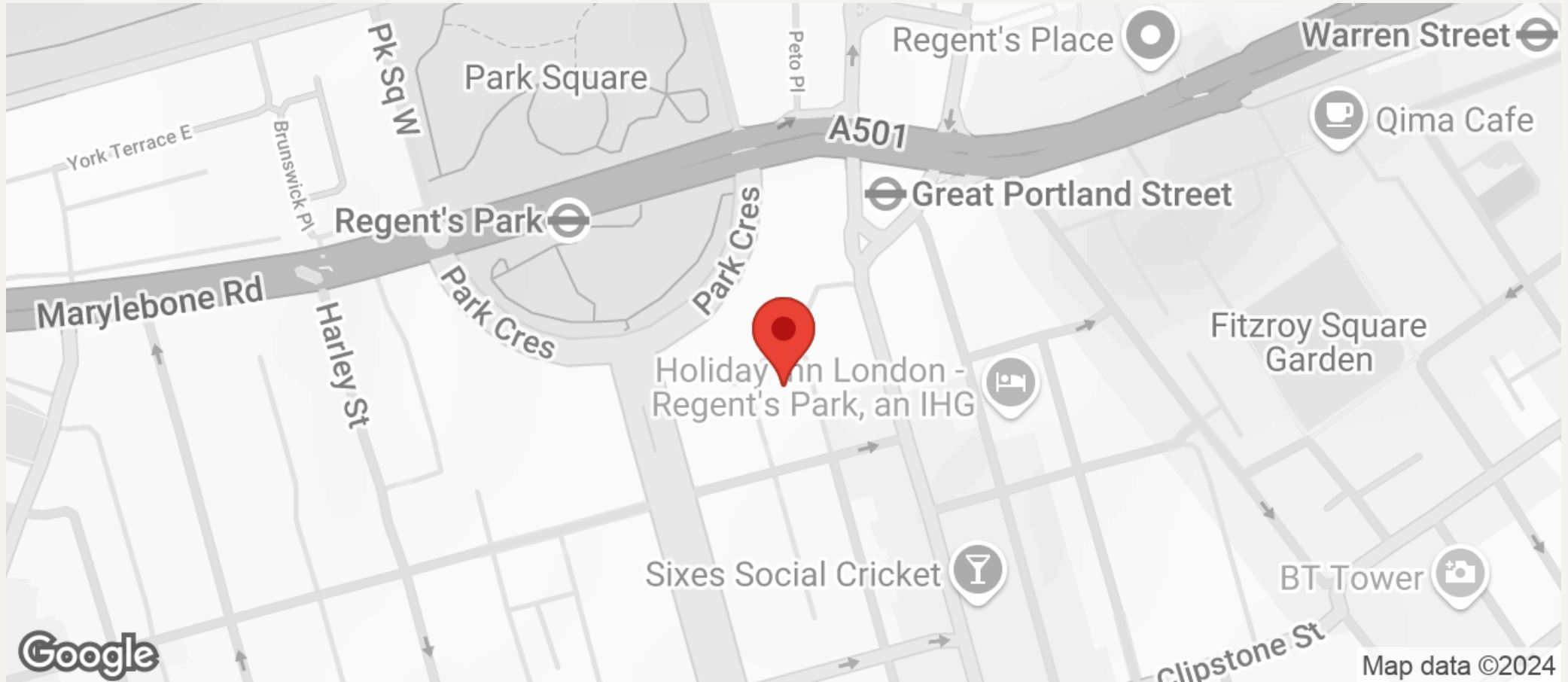


Please Note: This Floor Plan is for Representative Purposes Only.  
All clients and prospective buyers should use this Floor Plan  
for such purposes.



# JEREMY JAMES

HALLAM STREET, MARYLEBONE VILLAGE. LONDON W1W



All negotiations are subject to contract. The Agents are not authorised to make or accept any contractual offer unless prior written notification to the contrary has been given on behalf of the client. In no other case whatsoever are the Agents (or any employee or sub-agent) authorised to make or give any representation or warranty on behalf of any party, and whilst information and particulars are given in all good faith intending purchasers and lessees must satisfy themselves independently as to the accuracy of all matters upon which then intend to rely. Measurements or distances referred to are approximately only. We have not carried out a survey or tested the services, appliances or specific fittings.

33 New Cavendish Street  
London,  
W1G 9TS  
020 7486 4111  
jeremyjames@jeremy-james.co.uk