



JEREMY JAMES

WIMPOLE STREET, MARYLEBONE VILLAGE, W1



PRICE

£995 per week

FURNISHINGS

Furnished/Unfurnished

DEPOSIT

£5,970

LOCAL AUTHORITY

City of Westminster

COUNCIL TAX BAND

G

33 New Cavendish Street
London,
W1G 9TS

020 7486 4111
jeremyjames@jeremy-james.co.uk



JEREMY JAMES

WIMPOLE STREET, MARYLEBONE VILLAGE, W1



DESCRIPTION

The accommodation comprises of three bedrooms, spacious entrance hall and reception room with wooden floors, a family bathroom and an en-suite shower room along with a separate kitchen.

Situated on the fourth floor with a passenger lift.

Hot water and heating included within the rental price.

It also benefits from a communal garden.

Garage available under separate negotiation.

AMENITIES

Three Bedroom

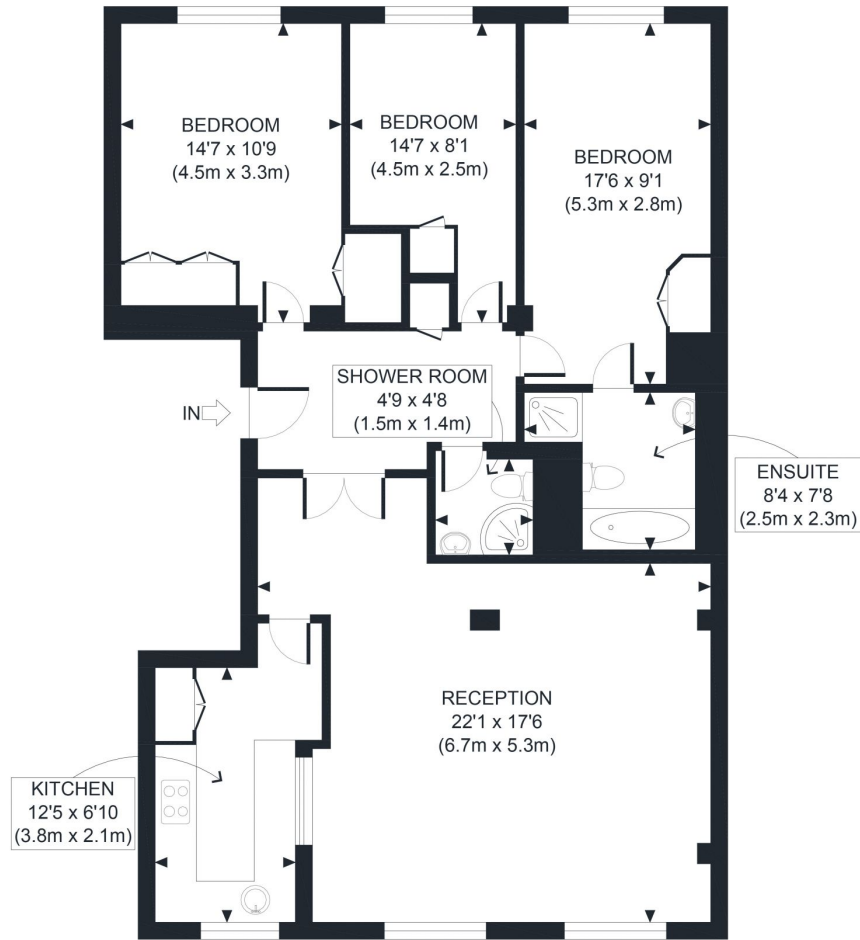
One Bathroom

Portered Block

Passenger Lift

Wood Floors

Communal Gardens



FOURTH FLOOR
GROSS INTERNAL
FLOOR AREA 1127 SQ FT

APPROX. GROSS INTERNAL FLOOR AREA 1127 SQ FT / 105 SQM

Ref:

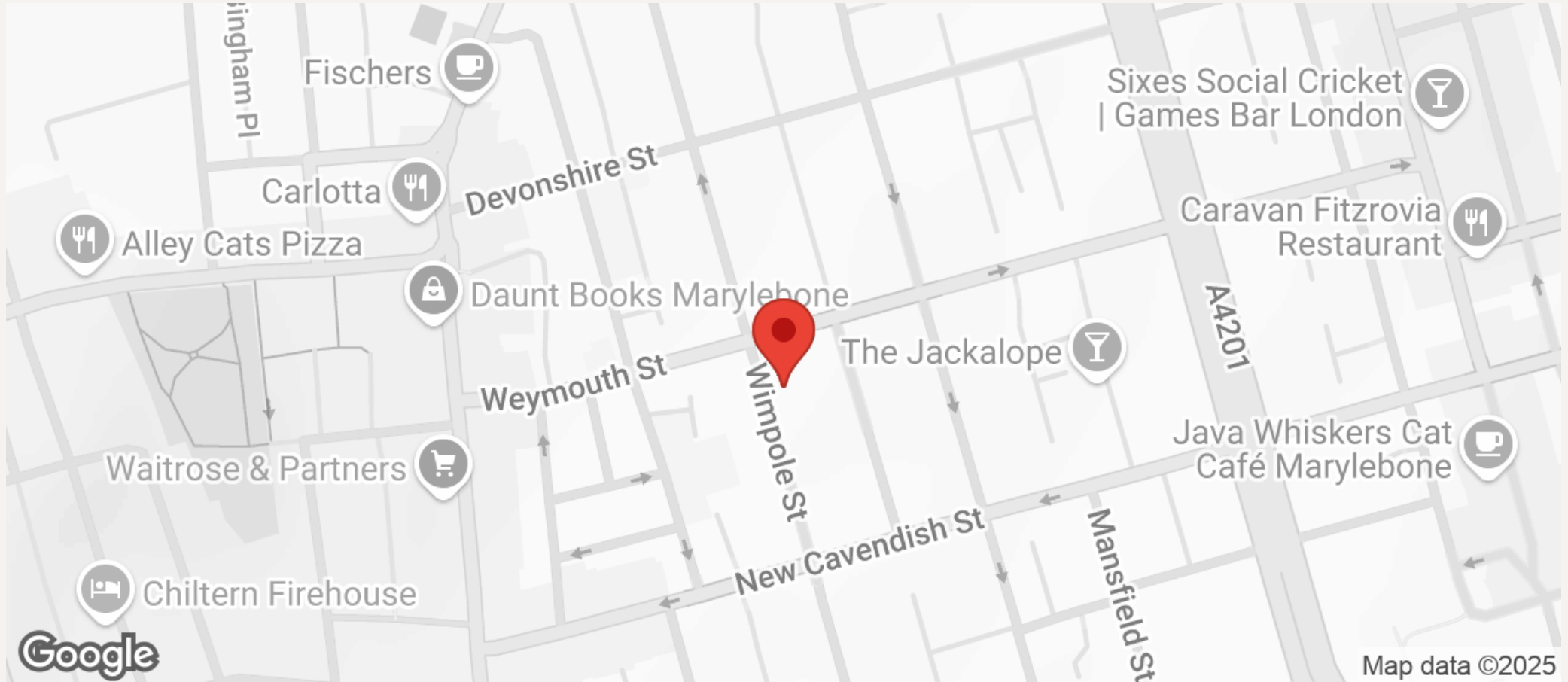
Copyright **photoplan** 

Disclaimer: Floor plan measurements are approximate and are for illustrative purposes only. While we do not doubt the floor plan accuracy and completeness, you or your advisors should conduct a careful, independent investigation of the property in respect of monetary valuation



JEREMY JAMES

WIMPOLE STREET, MARYLEBONE VILLAGE, W1



All negotiations are subject to contract. The Agents are not authorised to make or accept any contractual offer unless prior written notification to the contrary has been given on behalf of the client. In no other case whatsoever are the Agents (or any employee or sub-agent) authorised to make or give any representation or warranty on behalf of any party, and whilst information and particulars are given in all good faith intending purchasers and lessees must satisfy themselves independently as to the accuracy of all matters upon which they intend to rely. Measurements or distances referred to are approximately only. We have not carried out a survey or tested the services, appliances or specific fittings.

33 New Cavendish Street
London,
W1G 9TS

020 7486 4111

jeremyjames@jeremy-james.co.uk