



JEREMY JAMES

WESTMORELAND STREET, MARYLEBONE VILLAGE, LONDON W1.



PRICE

£850 per week

FURNISHINGS

Unfurnished

DEPOSIT

£5,100

LOCAL AUTHORITY

City of Westminster

COUNCIL TAX BAND

G

33 New Cavendish Street
London,
W1G 9TS

020 7486 4111
jeremyjames@jeremy-james.co.uk



JEREMY JAMES

WESTMORELAND STREET, MARYLEBONE VILLAGE, LONDON W1.



DESCRIPTION

The apartment comprises of entrance hall, reception room, kitchen, three bedrooms, bathroom and a further shower room. The apartment is served by a passenger lift and is approximately 860 sq ft (79.9 sq m).

The building is situated on the east side of Westmoreland Street at the junction with New Cavendish Street. Westmoreland Street is located moments from the boutique shops and restaurants of Marylebone Village. Bond Street and Oxford Circus underground stations together with access to the A40/M40 are within close proximity. The open spaces of Regents Park are also nearby. Residents parking permit available subject to usual consents.

AMENITIES

Passenger Lift

3 bedrooms

2 bathrooms

Unfurnished

Heating and Hot Water Included

EPC: C

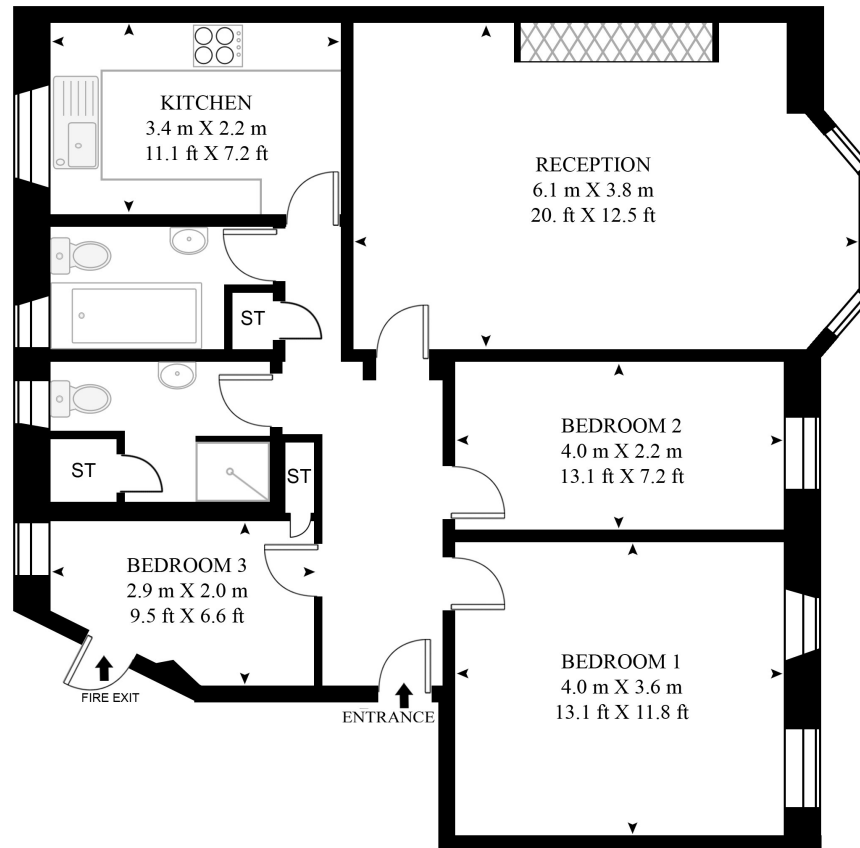
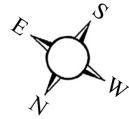
Moments from Marylebone High Street

33 New Cavendish Street
London,
W1G 9TS

020 7486 4111
jeremyjames@jeremy-james.co.uk

DUDLEY HOUSE

APPROXIMATE GROSS INTERNAL FLOOR AREA 860 SQ.FT (79.9 SQ.M)



FOURTH FLOOR



JEREMY JAMES

WESTMORELAND STREET, MARYLEBONE VILLAGE, LONDON W1.



All negotiations are subject to contract. The Agents are not authorised to make or accept any contractual offer unless prior written notification to the contrary has been given on behalf of the client. In no other case whatsoever are the Agents (or any employee or sub-agent) authorised to make or give any representation or warranty on behalf of any party, and whilst information and particulars are given in all good faith intending purchasers and lessees must satisfy themselves independently as to the accuracy of all matters upon which then intend to rely. Measurements or distances referred to are approximately only. We have not carried out a survey or tested the services, appliances or specific fittings.

33 New Cavendish Street
London,
W1G 9TS

020 7486 4111
jeremyjames@jeremy-james.co.uk