



# JEREMY JAMES

## BICKENHALL MANSIONS, BICKENHALL STREET, LONDON W1



### PRICE

£1,850,000

### TENURE

Leasehold - 80 Years

### SERVICE CHARGE

£12,000 per annum

### GROUND RENT

£25 per annum

### LOCAL AUTHORITY

City of Westminster

### COUNCIL TAX BAND

G

33 New Cavendish Street  
London,  
W1G 9TS

020 7486 4111  
jeremyjames@jeremy-james.co.uk



# JEREMY JAMES

## BICKENHALL MANSIONS, BICKENHALL STREET, LONDON W1

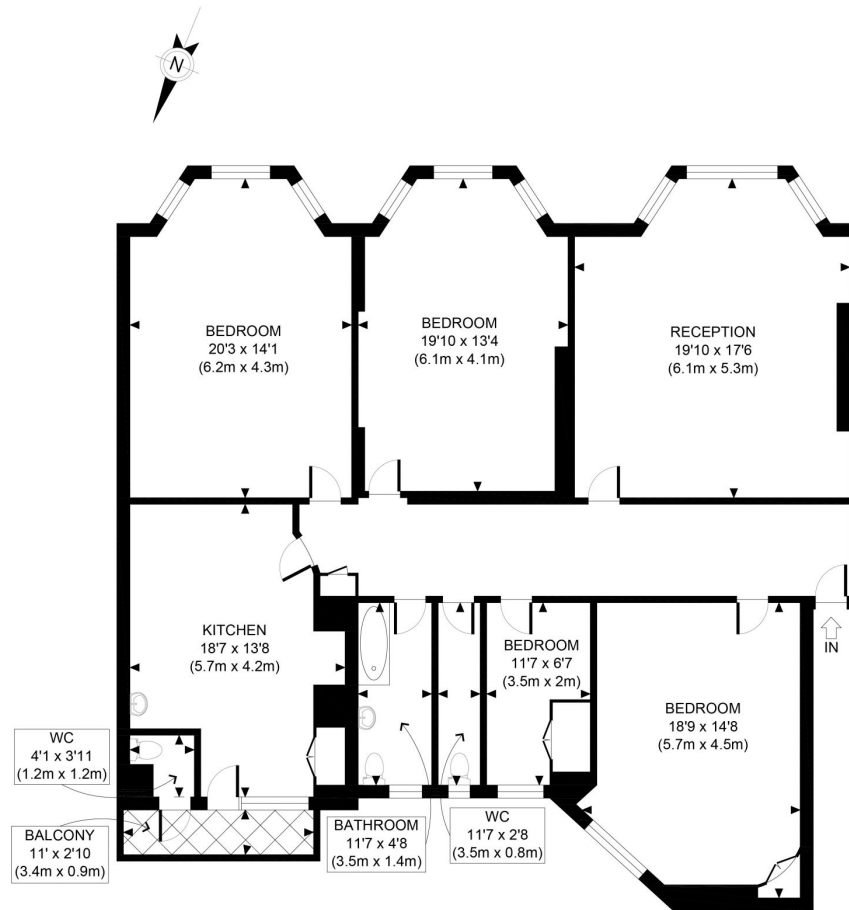


### DESCRIPTION

This apartment is in need of refurbishment and would make an ideal family home in the heart of the Marylebone Village, London W1. This spacious apartment benefits from having high ceilings with a balcony located off the kitchen. Bickenhall Mansions is ideally located for the boutique shops and restaurants of Marylebone High Street, as well as the green open spaces of nearby Regent's Park. Baker Street Underground Station is approximately 0.1 miles.

### AMENITIES

High Ceilings  
Second Floor  
Refurbishment Opportunity  
Lift



SECOND FLOOR  
GROSS INTERNAL  
FLOOR AREA 1742 SQ FT

APPROX. GROSS INTERNAL FLOOR AREA 1742 SQ FT / 162 SQM

Ref: Copyright **photoplan**

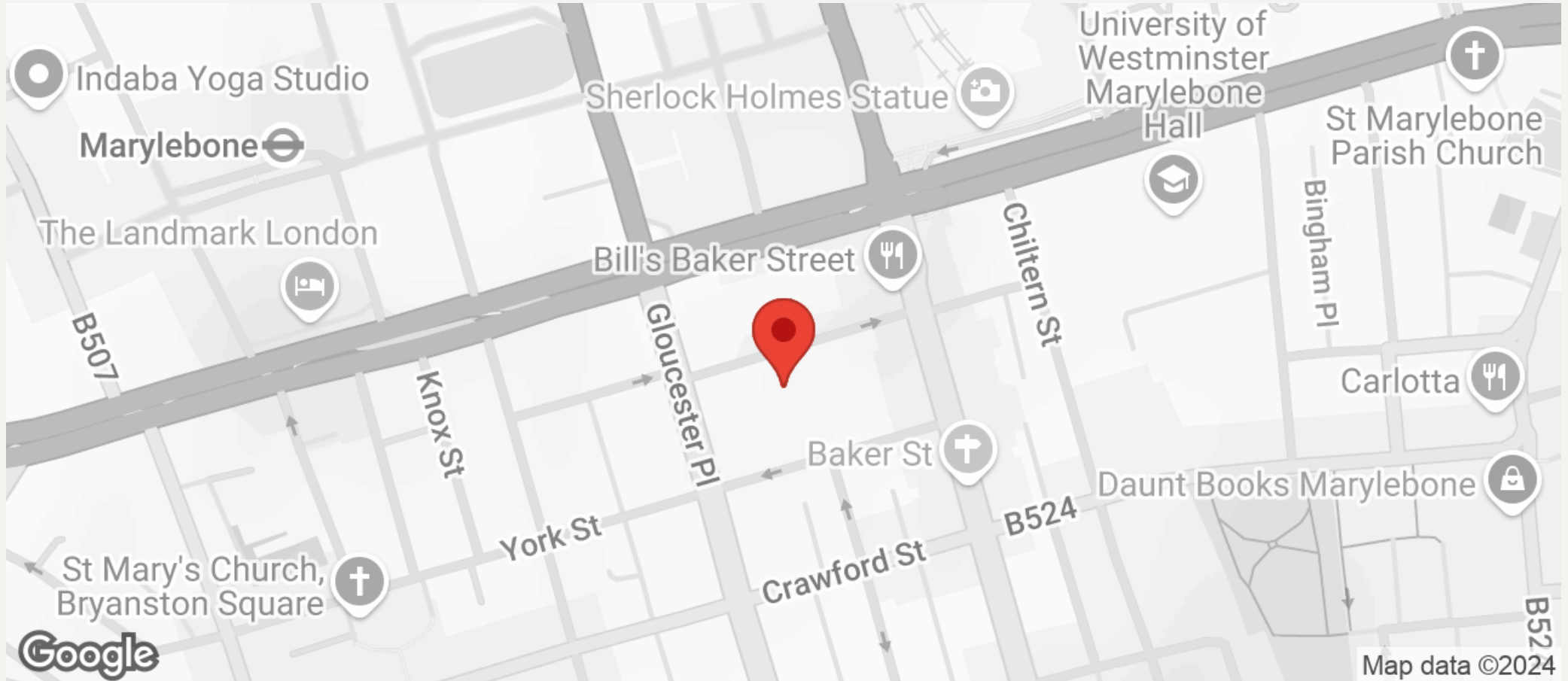
Disclaimer: Floor plan measurements are approximate and are for illustrative purposes only. While we do not doubt the floor plan accuracy and completeness, you or your advisors should conduct a careful, independent investigation of the property in respect of monetary valuation





# JEREMY JAMES

BICKENHALL MANSIONS, BICKENHALL STREET, LONDON W1



All negotiations are subject to contract. The Agents are not authorised to make or accept any contractual offer unless prior written notification to the contrary has been given on behalf of the client. In no other case whatsoever are the Agents (or any employee or sub-agent) authorised to make or give any representation or warranty on behalf of any party, and whilst information and particulars are given in all good faith intending purchasers and lessees must satisfy themselves independently as to the accuracy of all matters upon which then intend to rely. Measurements or distances referred to are approximately only. We have not carried out a survey or tested the services, appliances or specific fittings.

33 New Cavendish Street  
London,  
W1G 9TS

020 7486 4111

jeremyjames@jeremy-james.co.uk