



JEREMY JAMES

WIMPOLE MEWS, MARYLEBONE VILLAGE, LONDON W1



PRICE

£1,950,000

TENURE

Leasehold

LOCAL AUTHORITY

City of Westminster

33 New Cavendish Street
London,
W1G 9TS

020 7486 4111
jeremyjames@jeremy-james.co.uk



JEREMY JAMES

WIMPOLE MEWS, MARYLEBONE VILLAGE, LONDON W1



DESCRIPTION

Accommodation comprises; Entrance hall; Two bedrooms, Kitchen, Reception room, Bathroom, Study and Large single garage.

Bond Street and Oxford Circus underground stations are within close proximity.

Planning permission was granted for an additional floor in 2008.

AMENITIES

Popular Mews

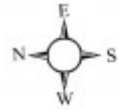
Large Single Garage

Long Lease

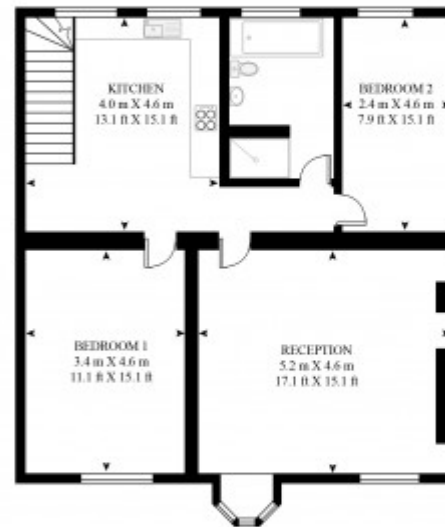


WIMPOLE MEWS

APPROXIMATE GROSS INTERNAL FLOOR AREA 1140 SQ.FT (106 SQ.M)



GROUND FLOOR



FIRST FLOOR

HDVA

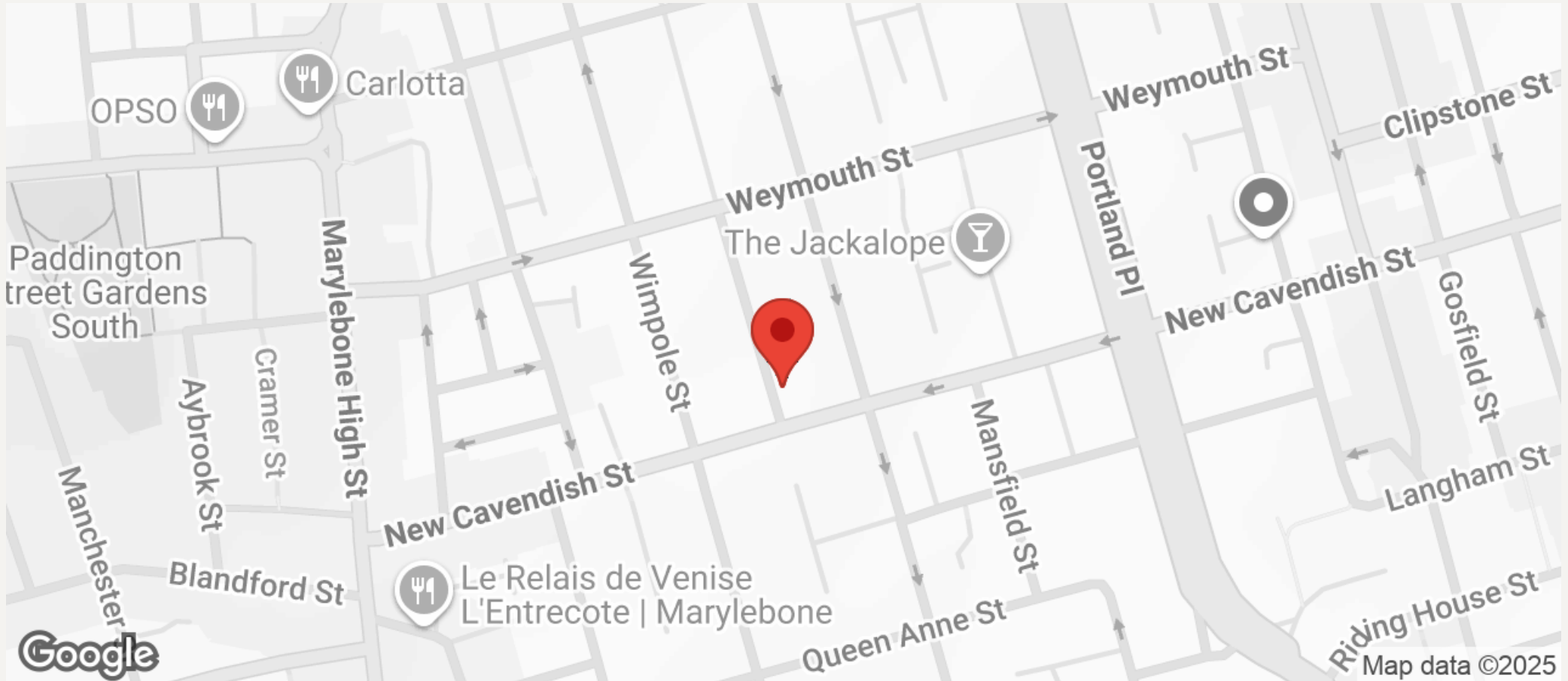
This floor plan has been defined by the RICS Code of Measurement. This floor plan and all others are for approximate representative purposes only and upon usage is agreed to as such by the client.

WWW: hdvirtualart.com | TEL: 0207 923 7300 | EMAIL: info@hdvirtualart.com



JEREMY JAMES

WIMPOLE MEWS, MARYLEBONE VILLAGE, LONDON W1



All negotiations are subject to contract. The Agents are not authorised to make or accept any contractual offer unless prior written notification to the contrary has been given on behalf of the client. In no other case whatsoever are the Agents (or any employee or sub-agent) authorised to make or give any representation or warranty on behalf of any party, and whilst information and particulars are given in all good faith intending purchasers and lessees must satisfy themselves independently as to the accuracy of all matters upon which then intend to rely. Measurements or distances referred to are approximately only. We have not carried out a survey or tested the services, appliances or specific fittings.

33 New Cavendish Street
London,
W1G 9TS

020 7486 4111

jeremyjames@jeremy-james.co.uk