



JEREMY JAMES

DEVONSHIRE MEWS WEST. MARYLEBONE VILLAGE, LONDON W1G



PRICE

£1,195 per week

FURNISHINGS

Unfurnished

DEPOSIT

£7,170

LOCAL AUTHORITY

City of Westminster

COUNCIL TAX BAND

H

33 New Cavendish Street
London,
W1G 9TS

020 7486 4111
jeremyjames@jeremy-james.co.uk



JEREMY JAMES

DEVONSHIRE MEWS WEST. MARYLEBONE VILLAGE, LONDON W1G



DESCRIPTION

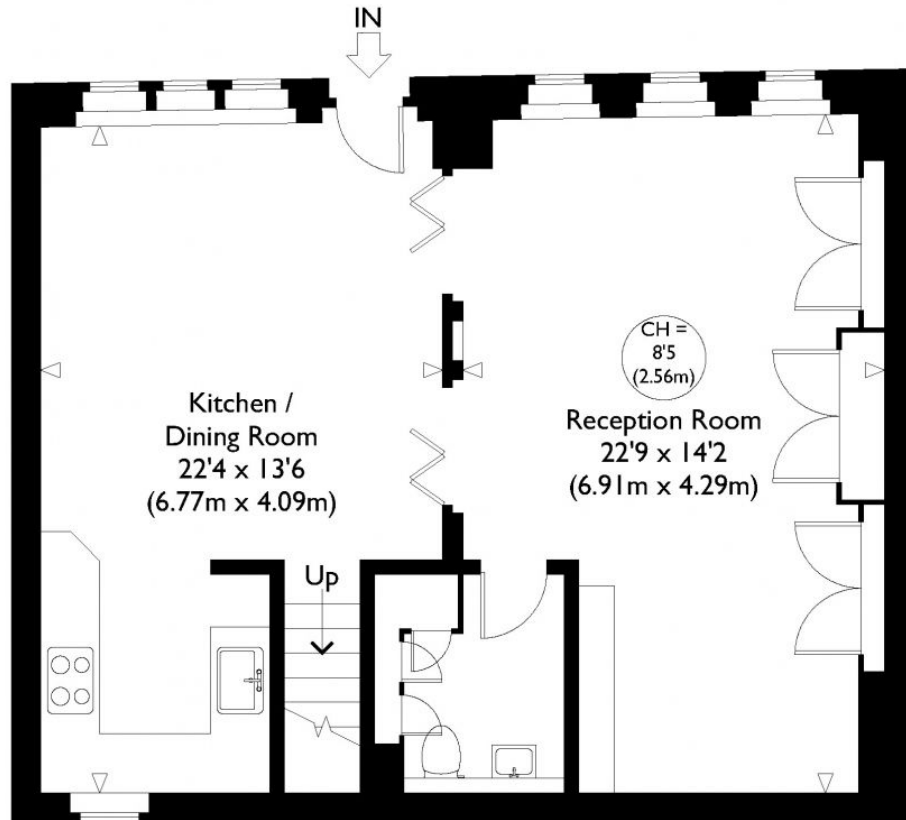
The accommodation comprises of an open plan living space on the ground floor with kitchen/dining room and reception room plus a cloakroom and three bedrooms on the first floor, ensuite shower room and bathroom.

It boasts wooden floor in the reception areas and new carpet in the bedrooms, the house has been freshly painted.

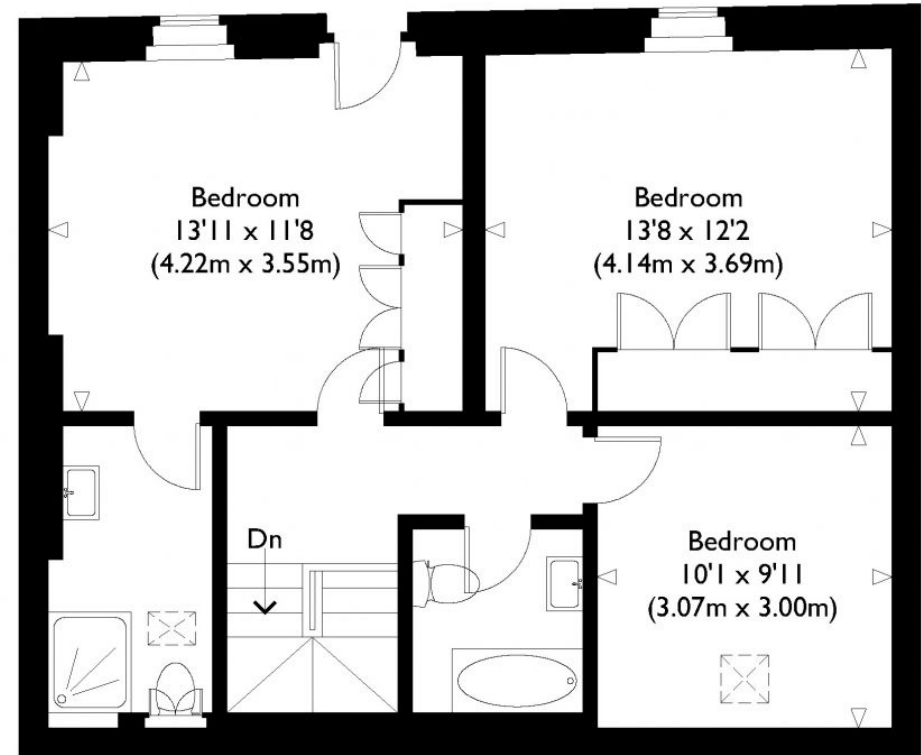
AMENITIES

Wood Floors
Mews House
Refurbished
EPC Rating E

Devonshire Mews West



Ground Floor



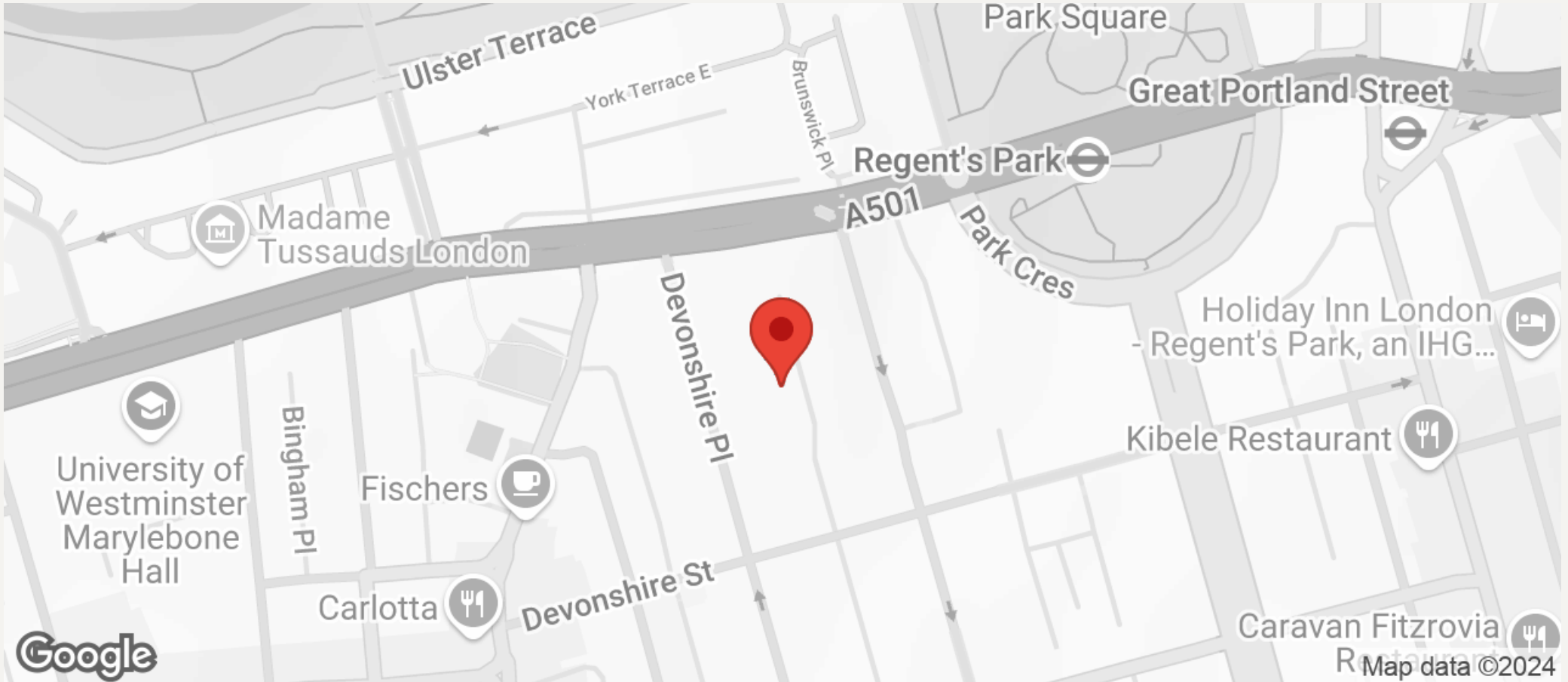
First Floor

Approximate Gross Internal Floor Area : 1262 sq ft / 117.2 sq m
Illustration for identification purposes only, measurements are approximate, not to scale.



JEREMY JAMES

DEVONSHIRE MEWS WEST. MARYLEBONE VILLAGE, LONDON W1G



All negotiations are subject to contract. The Agents are not authorised to make or accept any contractual offer unless prior written notification to the contrary has been given on behalf of the client. In no other case whatsoever are the Agents (or any employee or sub-agent) authorised to make or give any representation or warranty on behalf of any party, and whilst information and particulars are given in all good faith intending purchasers and lessees must satisfy themselves independently as to the accuracy of all matters upon which they intend to rely. Measurements or distances referred to are approximately only. We have not carried out a survey or tested the services, appliances or specific fittings.

33 New Cavendish Street
London,
W1G 9TS

020 7486 4111

jeremyjames@jeremy-james.co.uk