



JEREMY JAMES

MAYBURY COURT, MARYLEBONE STREET, LONDON W1



PRICE

£695,000

TENURE

Leasehold - 44 Years

SERVICE CHARGE

£4,500 per annum

GROUND RENT

£250 per annum

LOCAL AUTHORITY

City of Westminster

COUNCIL TAX BAND

F

33 New Cavendish Street
London,
W1G 9TS

020 7486 4111
jeremyjames@jeremy-james.co.uk



JEREMY JAMES

MAYBURY COURT, MARYLEBONE STREET, LONDON W1



DESCRIPTION

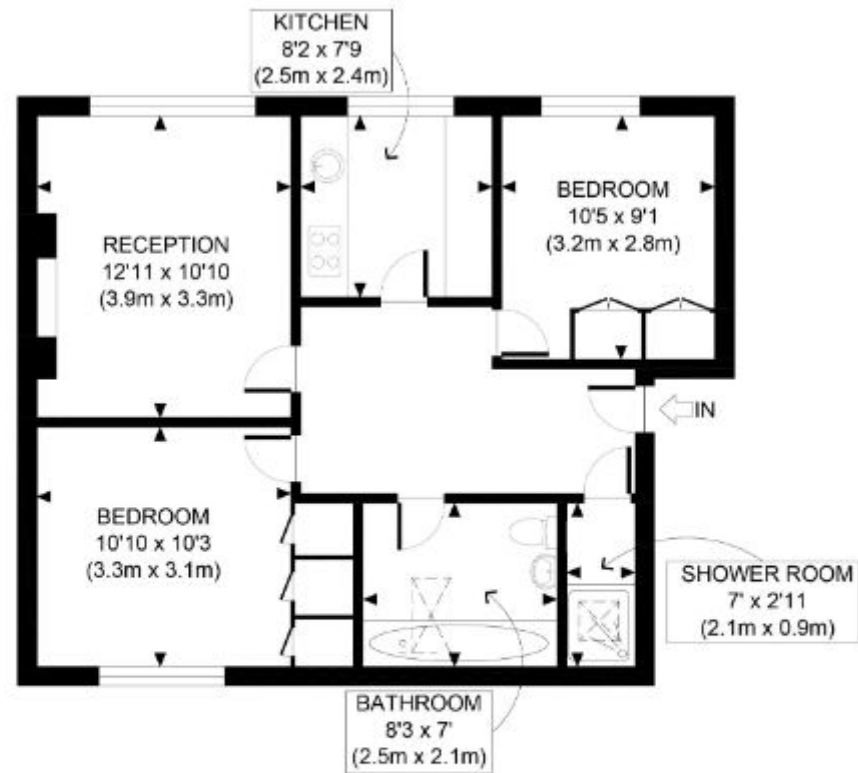
The building is located on the west side of Marylebone Street close to the junction with Weymouth Street. The building benefits from a communal garden. Bond Street and Baker Street underground stations together with the shopping facilities of Marylebone High Street are within close proximity. The open spaces of Regents Park are also nearby. Resident parking permit available subject to necessary consent.

AMENITIES

- 2 bedrooms
- Passenger Lift
- Caretaker
- Access to communal gardens
- Independent gas central heating
- Top Floor

33 New Cavendish Street
London,
W1G 9TS
020 7486 4111

jeremyjames@jeremy-james.co.uk



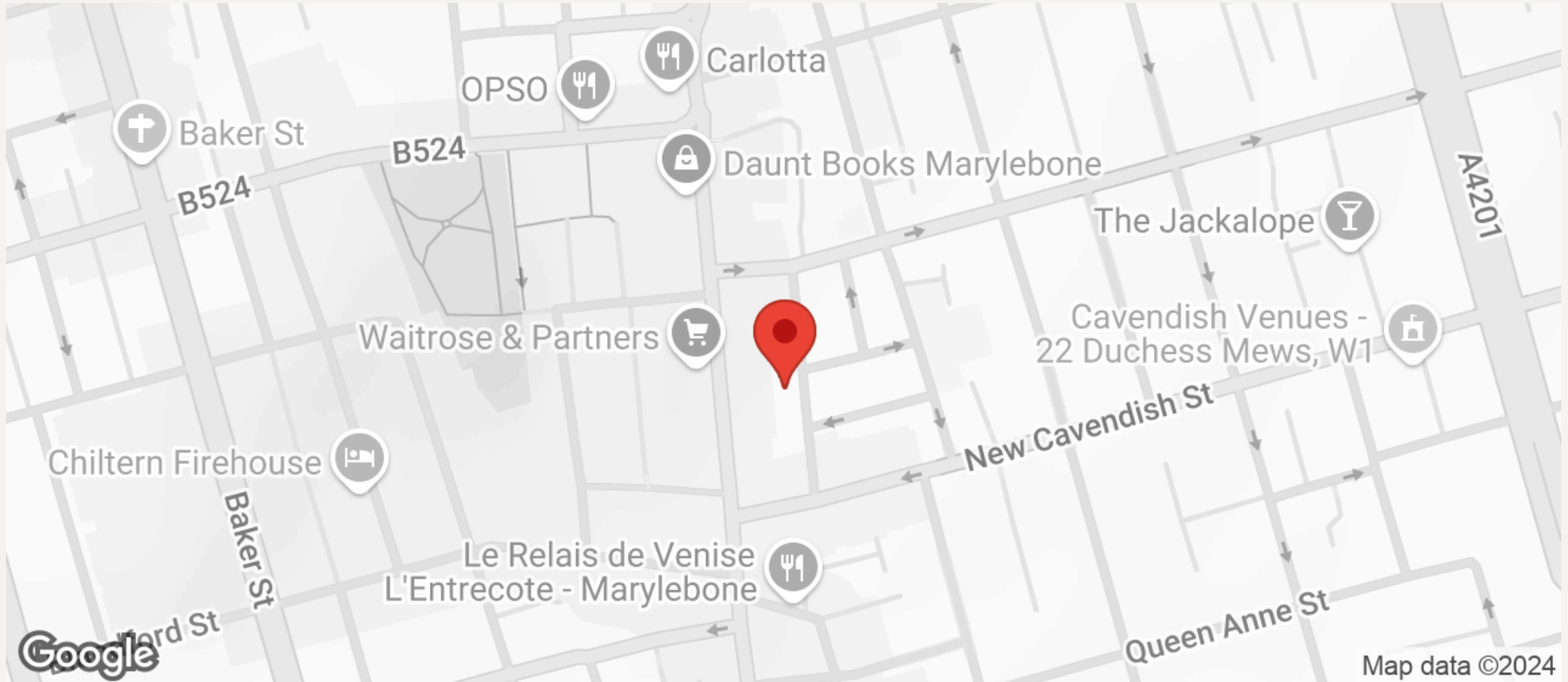
FIFTH FLOOR
GROSS INTERNAL
FLOOR AREA 637 SQ FT

APPROX. GROSS INTERNAL FLOOR AREA 637 SQ FT / 59 SQM



JEREMY JAMES

MAYBURY COURT, MARYLEBONE STREET, LONDON W1



All negotiations are subject to contract. The Agents are not authorised to make or accept any contractual offer unless prior written notification to the contrary has been given on behalf of the client. In no other case whatsoever are the Agents (or any employee or sub-agent) authorised to make or give any representation or warranty on behalf of any party, and whilst information and particulars are given in all good faith intending purchasers and lessees must satisfy themselves independently as to the accuracy of all matters upon which they intend to rely. Measurements or distances referred to are approximately only. We have not carried out a survey or tested the services, appliances or specific fittings.

33 New Cavendish Street
London,
W1G 9TS

020 7486 4111

jeremyjames@jeremy-james.co.uk