



JEREMY JAMES

HARLEY STREET, MARYLEBONE VILLAGE, LONDON W1



PRICE

£1,250,000

TENURE

Leasehold - 42 Years

SERVICE CHARGE

Approx £9,000 per annum

LOCAL AUTHORITY

City of Westminster

COUNCIL TAX BAND

E

33 New Cavendish Street
London,
W1G 9TS

020 7486 4111
jeremyjames@jeremy-james.co.uk



JEREMY JAMES

HARLEY STREET, MARYLEBONE VILLAGE, LONDON W1



DESCRIPTION

This two-bedroom apartment is situated on the second floor located in the heart of Marylebone Village. This unique apartment benefits from a live and practice medical license and has access to a communal waiting room on the ground floor. The common parts including the lift have recently been refurbished.

AMENITIES

Second Floor

Passenger Lift

Reside and Practice

Access to communal waiting room on the ground floor

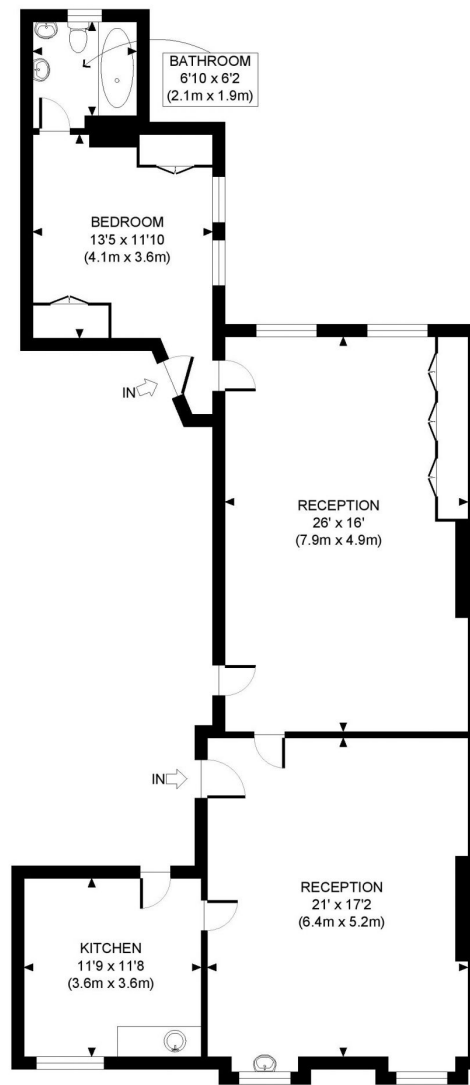
Porter

EPC: D

Lease Expiring September 2065

LOCATION

Both Oxford Circus and Bond Street underground stations are within close proximity. The shopping facilities of Marylebone high street and Oxford Street together with the open spaces of Regent Park are also nearby.



SECOND FLOOR
GROSS INTERNAL
FLOOR AREA 1160 SQ FT

APPROX. GROSS INTERNAL FLOOR AREA: 1160 SQ FT/ 108 SQM

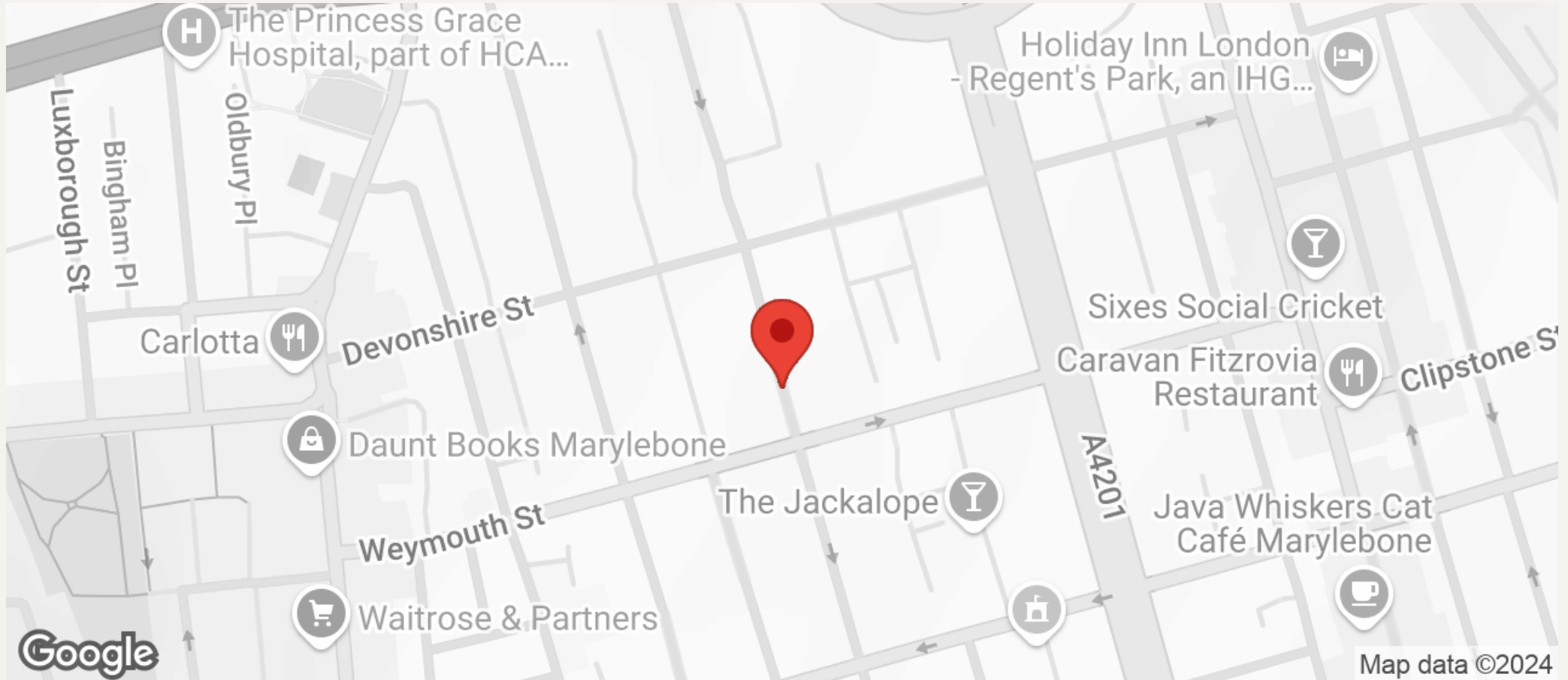
PROPERTY PHOTO PLANS.co.uk
ONE STOP SHOP FOR PROPERTY MARKETING

Whilst every attempt has been made to ensure the accuracy of the floor plan contained here, measurements of the doors, windows, rooms and any other items are approximate and no responsibility is taken for any errors, omissions, or miss-statement. This plan is for illustrative purposes only and should be used as such by any prospective client. The services, systems and appliances shown have not been tested and no guarantee as to the operability or efficiency can be given.



JEREMY JAMES

HARLEY STREET, MARYLEBONE VILLAGE, LONDON W1



All negotiations are subject to contract. The Agents are not authorised to make or accept any contractual offer unless prior written notification to the contrary has been given on behalf of the client. In no other case whatsoever are the Agents (or any employee or sub-agent) authorised to make or give any representation or warranty on behalf of any party, and whilst information and particulars are given in all good faith intending purchasers and lessees must satisfy themselves independently as to the accuracy of all matters upon which then intend to rely. Measurements or distances referred to are approximately only. We have not carried out a survey or tested the services, appliances or specific fittings.

33 New Cavendish Street
London,
W1G 9TS

020 7486 4111

jeremyjames@jeremy-james.co.uk