



JEREMY JAMES

MAYBURY COURT, MARYLEBONE VILLAGE, LONDON W1



PRICE

£695 per week

FURNISHINGS

Furnished

DEPOSIT

£3,475

LOCAL AUTHORITY

City of Westminster

33 New Cavendish Street
London,
W1G 9TS

020 7486 4111
jeremyjames@jeremy-james.co.uk



JEREMY JAMES

MAYBURY COURT, MARYLEBONE VILLAGE, LONDON W1



DESCRIPTION

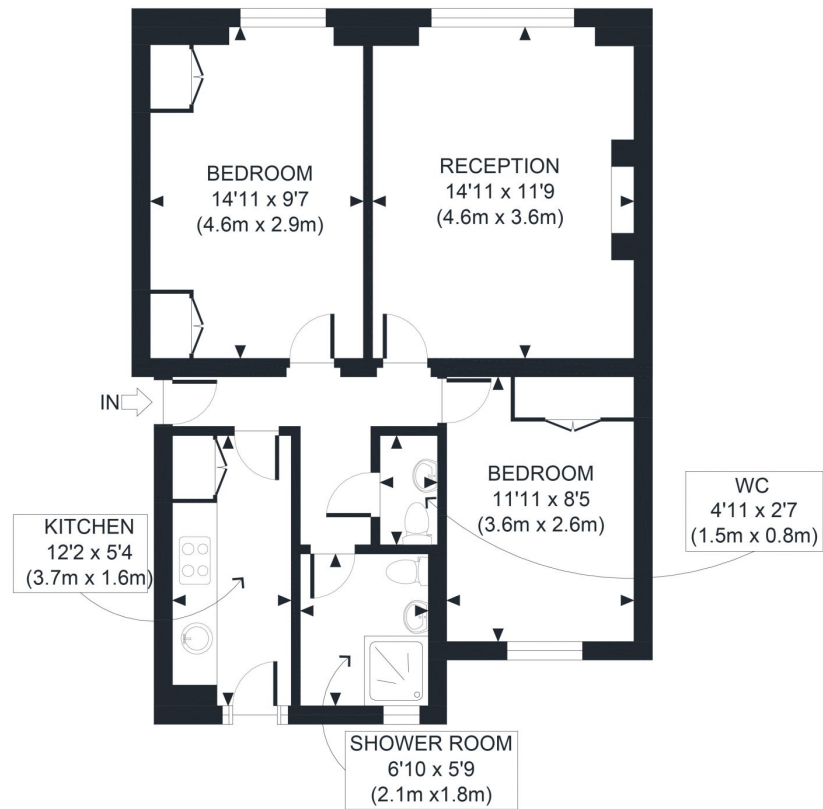
This light and airy garden apartment comprises of entrance hall, reception room, two double bedrooms, bathroom, kitchen, and cloakroom. The apartment has recently been redecorated throughout and has been fitted with a brand new kitchen. The apartment also benefits from direct access to a private communal garden.

The building is on the west side of the very quiet Marylebone Street. Bond Street and Baker Street underground stations together with the shopping facilities of Marylebone High Street are within close proximity. The open spaces of Regents Park are also nearby.



AMENITIES

- Two Double Bedrooms
- Caretaker Block
- Direct Access to Communal Gardens
- Energy Rating C
- Furnished



LOWER GROUND FLOOR
GROSS INTERNAL
FLOOR AREA 622 SQ FT

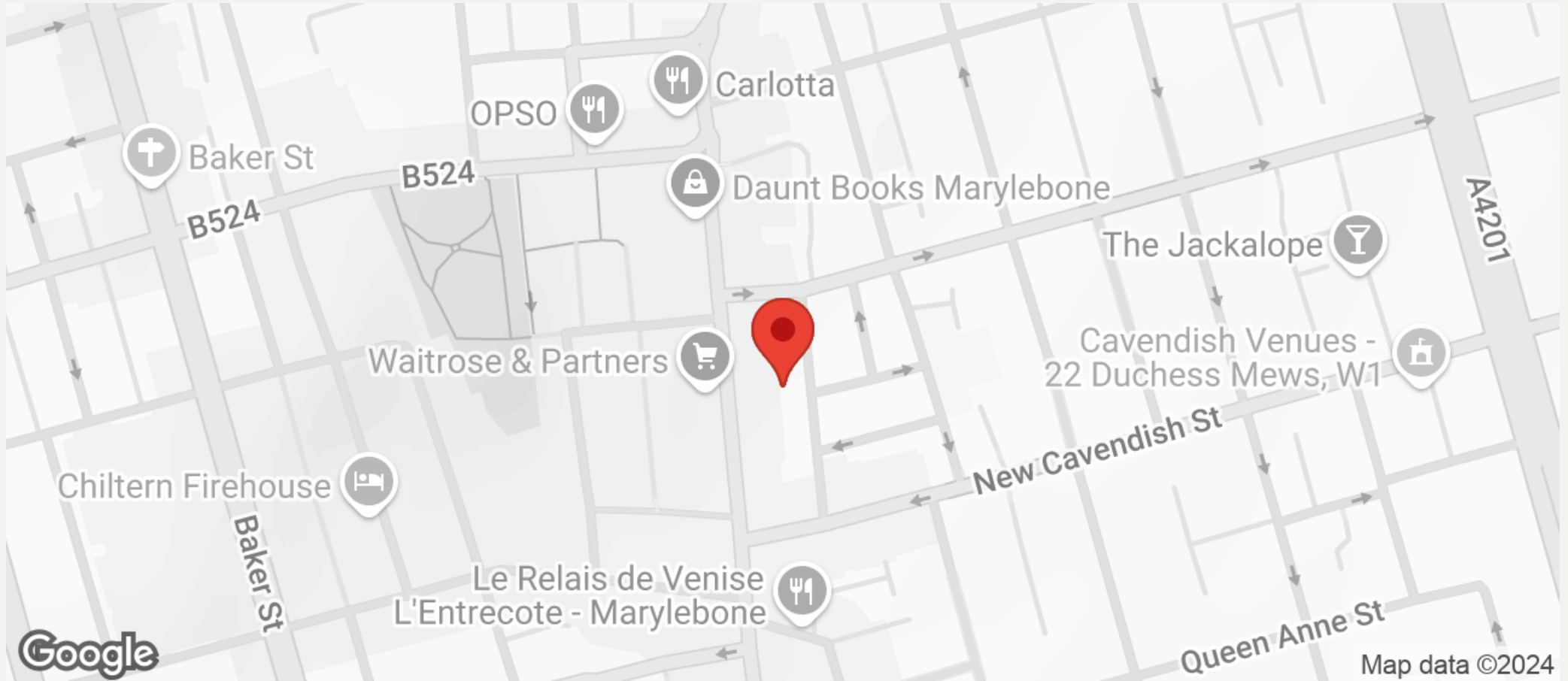
APPROX. GROSS INTERNAL FLOOR AREA 622 SQ FT / 58 SQM

Disclaimer: Floor plan measurements are approximate and are for illustrative purposes only. While we do not doubt the floor plan accuracy and completeness, you or your advisors should conduct a careful, independent investigation of the property in respect of monetary valuation



JEREMY JAMES

MAYBURY COURT, MARYLEBONE VILLAGE, LONDON W1



All negotiations are subject to contract. The Agents are not authorised to make or accept any contractual offer unless prior written notification to the contrary has been given on behalf of the client. In no other case whatsoever are the Agents (or any employee or sub-agent) authorised to make or give any representation or warranty on behalf of any party, and whilst information and particulars are given in all good faith intending purchasers and lessees must satisfy themselves independently as to the accuracy of all matters upon which they intend to rely. Measurements or distances referred to are approximately only. We have not carried out a survey or tested the services, appliances or specific fittings.

33 New Cavendish Street
London,
W1G 9TS

020 7486 4111

jeremyjames@jeremy-james.co.uk