



JEREMY JAMES

WEYMOUTH STREET, MARYLEBONE VILLAGE, LONDON W1G



PRICE

£895 per week

FURNISHINGS

Furnished

DEPOSIT

£4,475

LOCAL AUTHORITY

City of Westminster

COUNCIL TAX BAND

E

33 New Cavendish Street
London,
W1G 9TS

020 7486 4111
jeremyjames@jeremy-james.co.uk



JEREMY JAMES

WEYMOUTH STREET, MARYLEBONE VILLAGE, LONDON W1G



DESCRIPTION

The accommodation comprises of two double bedrooms with fitted storage, two bathrooms with power showers (one en-suite), bright reception room with remote controlled gas pebble fire and open-plan fully fitted kitchen.

Located a stones throw from Marylebone High Street and it's wide range of fashionable restaurants, cafes and boutiques, the property enjoys an excellent location and is also well situated for the public transport being within walking distance of both Baker Street and Bond street underground stations, together with Regents Park and other nearby green spaces.

AMENITIES

Two Bedrooms

Two Bathrooms

Furnished

Moments from Marylebone High Street

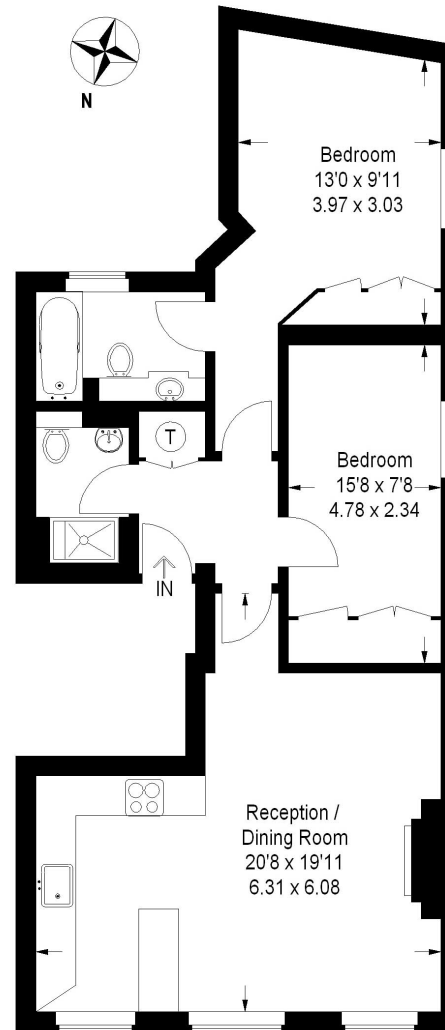
EPC: E

33 New Cavendish Street
London,
W1G 9TS

020 7486 4111
jeremyjames@jeremy-james.co.uk

Weymouth Street, W1

Approximate Gross Internal Area
68 sq m / 732 sq ft



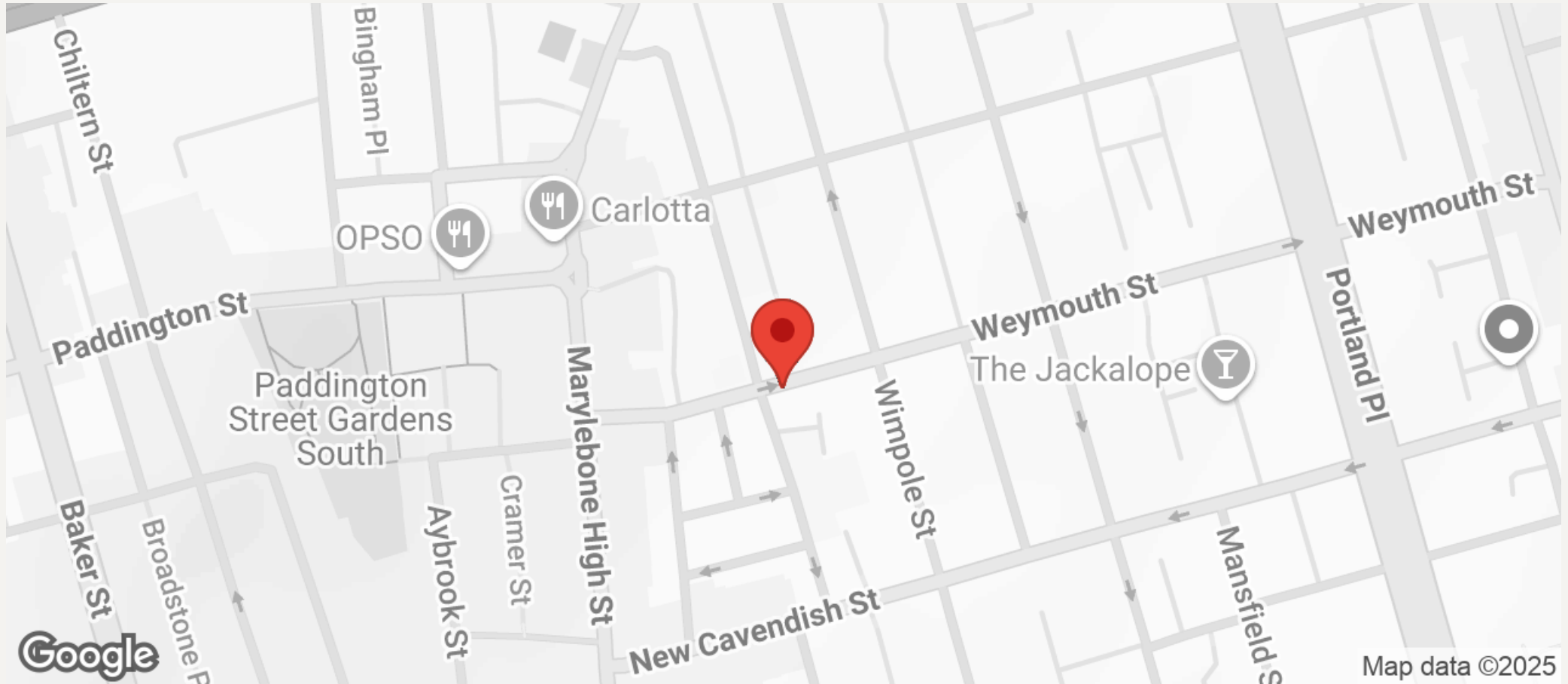
Third Floor

This plan is for layout guidance only. Not drawn to scale unless stated. Windows and door openings are approximate. Whilst every care is taken in the preparation of this plan, please check all dimensions, shapes and compass bearings before making any decisions reliant upon them. (ID 64404)



JEREMY JAMES

WEYMOUTH STREET, MARYLEBONE VILLAGE, LONDON W1G



All negotiations are subject to contract. The Agents are not authorised to make or accept any contractual offer unless prior written notification to the contrary has been given on behalf of the client. In no other case whatsoever are the Agents (or any employee or sub-agent) authorised to make or give any representation or warranty on behalf of any party, and whilst information and particulars are given in all good faith intending purchasers and lessees must satisfy themselves independently as to the accuracy of all matters upon which then intend to rely. Measurements or distances referred to are approximately only. We have not carried out a survey or tested the services, appliances or specific fittings.

33 New Cavendish Street
London,
W1G 9TS

020 7486 4111

jeremyjames@jeremy-james.co.uk